



517A, 5TH FLOOR, NARAIN MANZIL, 23, BARAKHAMBA ROAD, CONNAUGHT PLACE, NEW DELHI - 110 001, INDIA





Orion

GALAXY

Like Orion, the guardian of the night sky, there is a new landmark that stands tall in the suburban sky of Gurgaon.

Introducing Orion Galaxy, premium, apartments which create a life of opulence and comfort for a select few.

Just like the constellation, Orion Galaxy draws its flavour and variety from seven different pillars of vision, mainstream green, sustainability, planning, expertise, detailing, luxury and aesthetics. This has made it transform dreams into spaces that empower your thoughts, rejuvenate your spirit and realize your aspiration.

EXPERIENCE
THE SEVEN ELEMENTS OF OPULENT LIFE
WELCOME TO ORION GALAXY



SEVEN POINTS OF ACCESSABILITY

With your home at Orion Galaxy strategically placed at crossroads of expressways and arterial roads, now there will be no stopping for you moving inside the city or out of it.

Located at the heart of suburban business district of Gurgaon

Easy accessibility through Golf Course extension road

Easy and quick connectivity to CBD Gurgaon, NH8, Faridabad

Walking distance from upcoming metro station

30-minutes drive from New Delhi international airport

10-minutes drive from MG Road downtown of Gurgaon

Proximity to world class educational institutions, medical centres and malls





TWO

ARTISTIC 3D REPRESENTATION

SEVEN EMOTIONS OF BELONGING

At Orion Galaxy, every home is embellished with details that complement your unique self and echo your taste for the extraordinary.

Exclusive gated community

Only two apartments per floor

Your personal garden amidst wide sit-out balconies

Spacious apartments with comfortable large rooms

Wide frontage in every room to allow more natural light

Integrated interaction zones within the complex

Play areas and spaces for the elderly, segregated from vehicular traffic

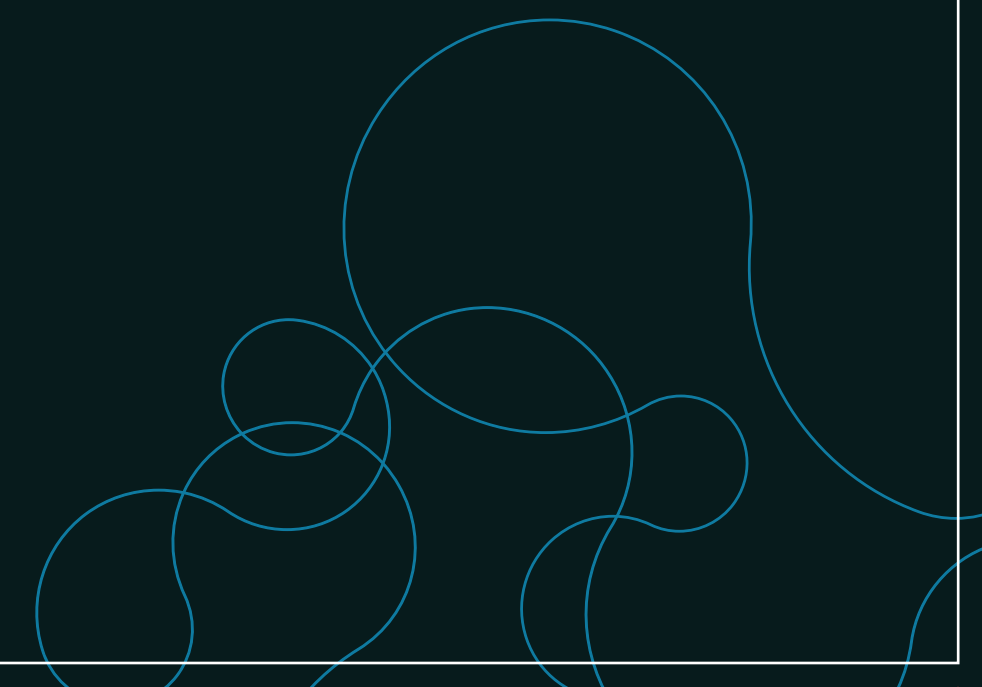




- *Roof top party place*
- *Private open air bar**
- *Organic Cafeteria*
- *Valet parking**
- *Swimming pool & Kid's splash pool*
- *Convenient shopping facilities*
- *Green thread with jogging and cycling*

SEVEN MOODS OF THE SPIRIT

With every home at Orion Galaxy, you get endless possibilities to invite your close world, connect and celebrate the being of togetherness.



SEVEN REASONS TO BE RELAXED

Find peace of mind with security features that make the best use of technology and human intelligence to provide you reliable homes at Orion Galaxy.

Gated Community -----

CCTV monitoring at entry and common areas ---

All homes linked to central security system ---

Advanced fire-fighting and life safety system ---

Seismic Zone IV compliance ---

Provision for RO water supply -----

Daily need store -----





SEVEN SIGNS OF INDIVIDUALITY

Experience a way of life that is designed completely around you, offering you facilities and services that make your life easy, pleasurable and worthwhile.

KEY FEATURES

- *Landscaped entrance forecourt*
- *Multi-level landscaping*
- *Cycling, walking and jogging track*
- *Barbeque pits*
- *Shopping and community centre*
- *24X7 power and water back-up*
- *Arboretum*

CLUB HOUSE AND SPORTS FACILITIES

Swimming pool and splash pool for kids

Billiards room & Table Tennis room

Gymnasium

Party lawn

Dedicated area for aerobics and yoga

SEVEN SHADES OF GREEN

Your home at Orion Galaxy is surrounded by nature and built with optimised material and resources that lower the energy costs and make for overall wellness.

Ample green & open area

Insulated rooftops and walls to cut down cooling requirement

Scientifically designed wind and light passages

Shading devices to allow light but restrict heat

Provision for solar lighting and water-heaters

Hybrid irrigation system for common areas

Rainwater harvesting



AREAS	WALLS	FLOORS	CEILING	DOORS	WINDOWS GLAZING	OTHERS
LIVING ROOMS/ FAMILY LOUNGE	Oil- bound distemper	Vitrified tiles	Oil-bound distrmper	Seasoned Hardwood Frames with Flush Door Stutters	Anodized/Powder coated aluminium window frames & louvers with clear/frosted/tinted glass	Copper wring, Concealed Conduitsend & Moduler Switches, 24x7 Power Back-Up for 1KVA, TV & Telephone points in living and master bedroom only
MASTER BEDROOM	Oil-bound distrmper	Vitrified tiles	Oil-bound distrmper	Internal: flush door External: Anodized/Powder coated aluminium door	Anodized/Powder coated aluminium window frames & louvers with clear/frosted/tinted glass	Copper wring, Concealed Conduitsend & Moduler Switches, 24x7 Power Back-Up for 1KVA, TV & Telephone points in living and master bedroom only
OTHER BEDROOMS	Oil-bound distrmper	Vitrified tiles	Oil-bound distrmper	Internal: flush door External: Anodized/Powder coated aluminium door	Anodized/Powder coated aluminium window frames & louvers with clear/frosted/tinted glass	Copper wring, Concealed Conduitsend & Moduler Switches, 24x7 Power Back-Up for 1KVA, TV & Telephone points in living and master bedroom only
KITCHEN	Combaination of tiles up to 2 feet above the counter and Oil-bound distemper the balance areas	Vitrified tiles/Ceramic tiles	Oil-bound distrmper	Internal: flush door External: Anodized/Powder coated aluminium door	Anodized/Powder coated aluminium window frames & louvers with clear/frosted/tinted glass	Marble counter with single bowl S/S sink, with C.P. fitting
BALCONIES/ TERRACES	M.S. railing with handrail	Anti-skid tiles	Weather-proof exterior paint	Anodized/Powder coated aluminium doors	Anodized/Powder coated aluminium window frames & louvers with clear/frosted/tinted glass	
MASTER TOILET	Vitrified tiles/Ceramic tiles	Vitrified tiles/Ceramic Chinaware, CP fittings Stone counter	Oil-bound distrmper	Flush door shutter	Anodized/Powder coated aluminium window frames & louvers with clear/frosted/tinted glass	
OTHER TOILETS	Vitrified tiles/Ceramic tiles	Vitrified tiles/Ceramic Chinaware, CP fittings Stone counter	Oil-bound distrmper	Flush door shutter	Anodized/Powder coated aluminium window frames & louvers with clear/frosted/tinted glass	
S.ROOM/ UTILITY	Oil-bound distemper	Ceramic tiles	Oil-bound distemper	Flush door shutter	Anodized/Powder coated aluminium window frames & louvers with clear/frosted/tinted glass	
FACILITIES	High speed elevators, 100% power back-up, landscaped courts with sit out spaces, party lawns and terraces, nursery school, shopping centre, swimming pool, kids splash pool, Table Tennis, gymnasium, organic café and dedicated area for aerobics and yoga, gated community, adequate surface and basement parking, daily need store, RO water supply, tree-lined boulevard, pedestrian zones segregated from vehicular traffic, area for elderly play area, jogging tracks, solar hot water systems for common facilities, hybrid irrigation system for common areas, multi level landscaping, comprehensive water harvesting and recycling					
SAFETY/ SECURITY	Zone IV seismic activity compliance, homes linked to central security system, advanced fire detection and life safety systems, CCTV for common areas and entry & exit to the development; communication system linked to each unit.					

SPECIFICATIONS

Disclaimer: This does not constitute a legal offering. All building, layouts, specifications etc, are tentative and subject to variations and modifications by the company or the competent authority sanctioning such plans till final completion of the project. Some feature may be available in select apartments only.

License No. 67 Dated 31/08/2010 issued to Soni Infratech Pvt. Ltd. and others for Group Housing Colony of 12.287 acres. Building Plans approved on 12/07/2011 vide Memo No. ZP-660/ JD (BS)/ 2011/9352 Dated 12/07/2011. Total 654 DUs + 99 EWS, Nursery School, Convenient Shopping and Community Building. Approvals may be checked in the office of Soni Infratech Private Limited at 517A, 5th Floor, Narain Manzil, 23, Barakhamba Road, Connaught Place, New Delhi - 110 001, India.



EXISTING HIGHWAY

PLANNED EXPRESSWAY

EXISTING APPROACH TO LOCATION

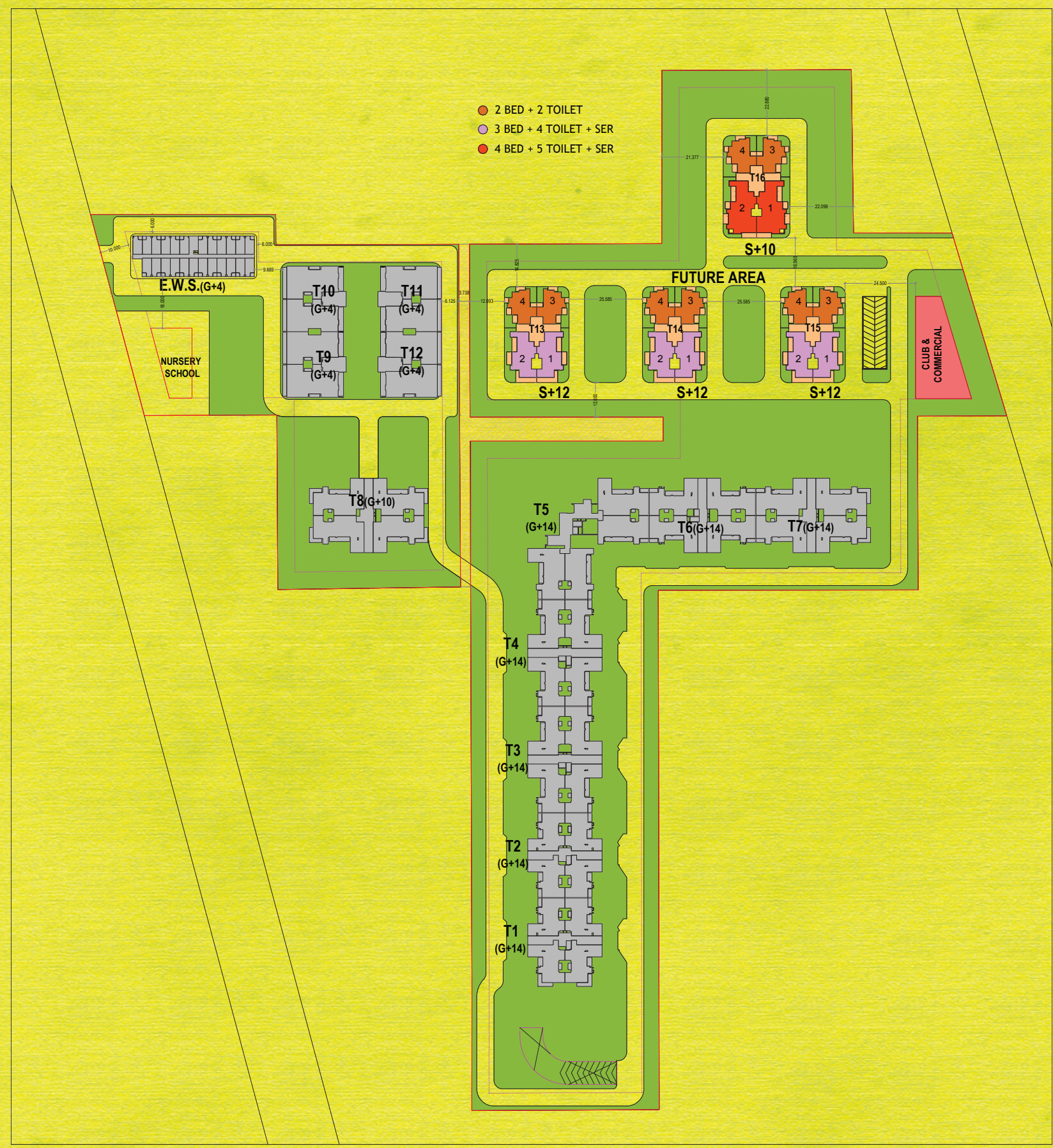
PLANNED METRO CORRIDOR

PROPOSED METRO STATION

IMPORTANT NODES

IGI AIRPORT

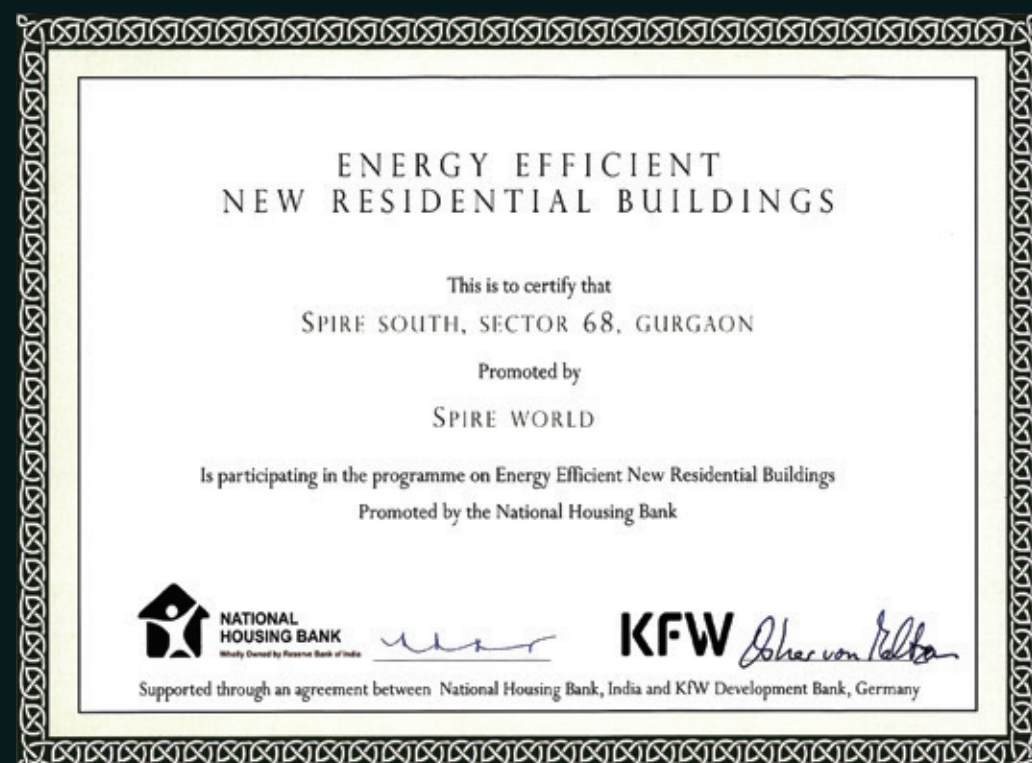
DISCLAIMER: MAP NOT TO SCALE. FOR REFERENCE ONLY.



- 2 BED + 2 TOILET
- 3 BED + 4 TOILET + SER
- 4 BED + 5 TOILET + SER

Orion
GALAXY

CERTIFIED TO SAVE MORE THAN 30% ON ENERGY CONSUMPTIONS



We were one of the few development houses who had participated in the promotional programme for the energy efficient new residential construction in India. The National Housing Bank (NHB) of India and the KfW Development Bank (KfW) were the program proponents with technical support from Fraunhofer Institute (Germany) and TERI. Based on technical assessment, our project was certified more than 30% energy efficient, than similar housing projects as per Indian housing standards.



A PROJECT BY TASHEE GROUP