



SKYi
MANAS LAKE

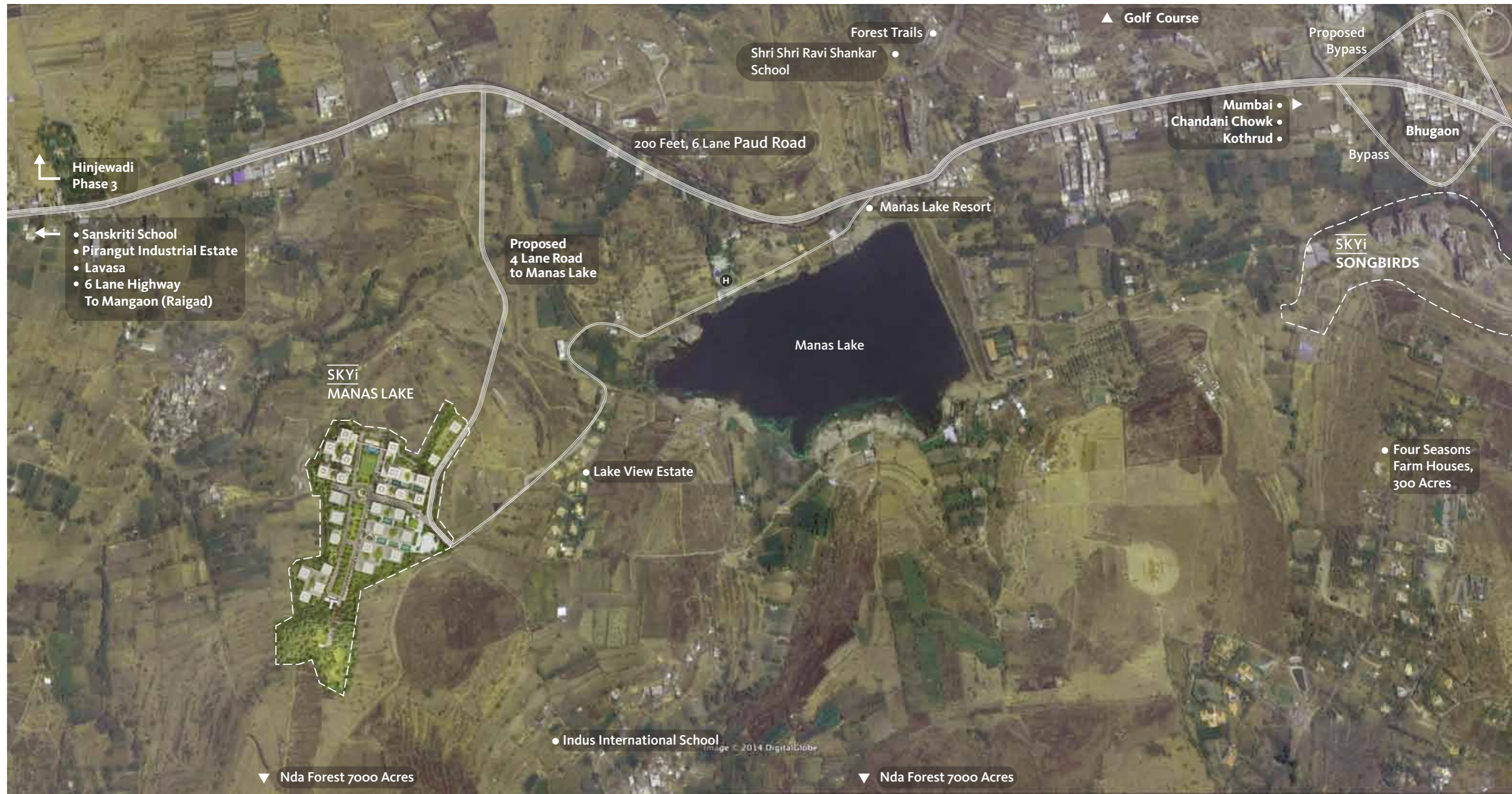
tower 08

Studio, 1 bhk & 2 bhk Apartments



Thoughtful design forms the core principle of the development at Manas Lake. We have designed the township in a manner which adapts to the environment; to our functional, emotional, psychological and social needs. Surrounded by lush greenery and replete with the best amenities and facilities; the township offers a serene and contemporary lifestyle. The gardens, lobbies, art gallery, amphitheatre, homes all showcase tasteful collections that celebrate the spirit of creativity. Life here is comfortable, convenient and refreshing.





SKYi
MANAS LAKE



Location Map

The Residences

- IRIS : 2 & 3 BHK Premium Apartments
- Studio, 1 bhk & 2 bhk Apartments
- Phase 1 Boundary

Amenities & Features

- | | | | |
|-----------------------------|----------------------------------|-------------------------------|--|
| A Main Access Road | D Central Park | I Multi Purpose Ground | N Bird Watching Pod |
| B Main Entrance Gate | E 4 Lane Internal Road | J Wetland Park | O Sports Facilities
- Tennis Court
- Futsal Court
- Basketball Court |
| C Club* | F Proposed 4 Lane Road | K Picnic Lawn | P Toddler Play Area |
| | G Walking / Jogging Track | L Family Pavillion | |
| | H Future Development | M Family Seating Area | |

* Terms & Conditions apply

Artist impression, map not to scale

Odd Floor Plan



1 BHK

CARPET AREA
456 sq. ft.

TERRACE AREA
38 sq. ft.

TOTAL AREA
642 sq. ft.



1 BHK

CARPET AREA
429 sq. ft.

TERRACE AREA
48 sq. ft.

TOTAL AREA
620 sq. ft.

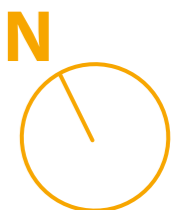


1 BHK

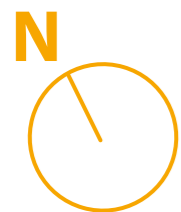
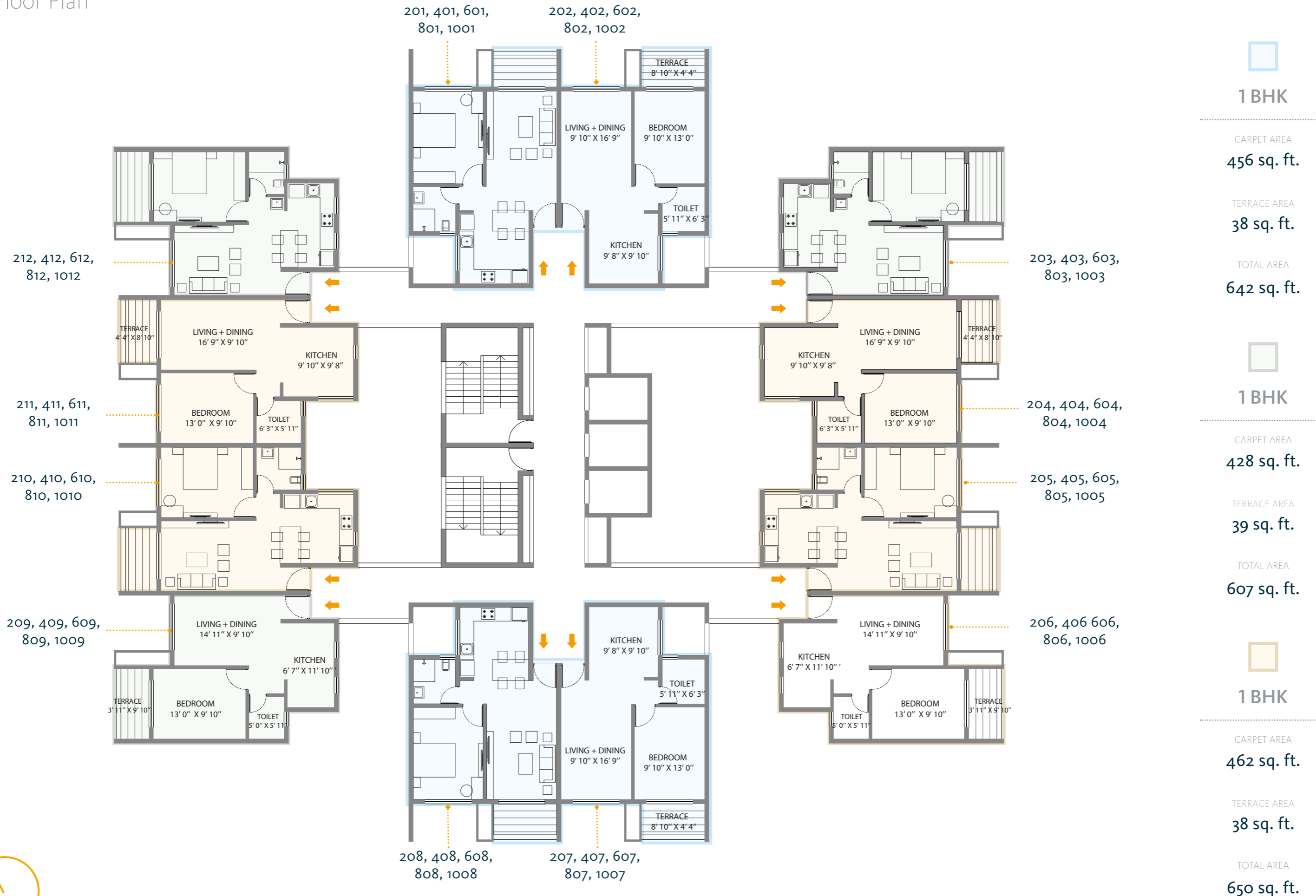
CARPET AREA
462 sq. ft.

TERRACE AREA
38 sq. ft.

TOTAL AREA
650 sq. ft.



Even Floor Plan



1 BHK

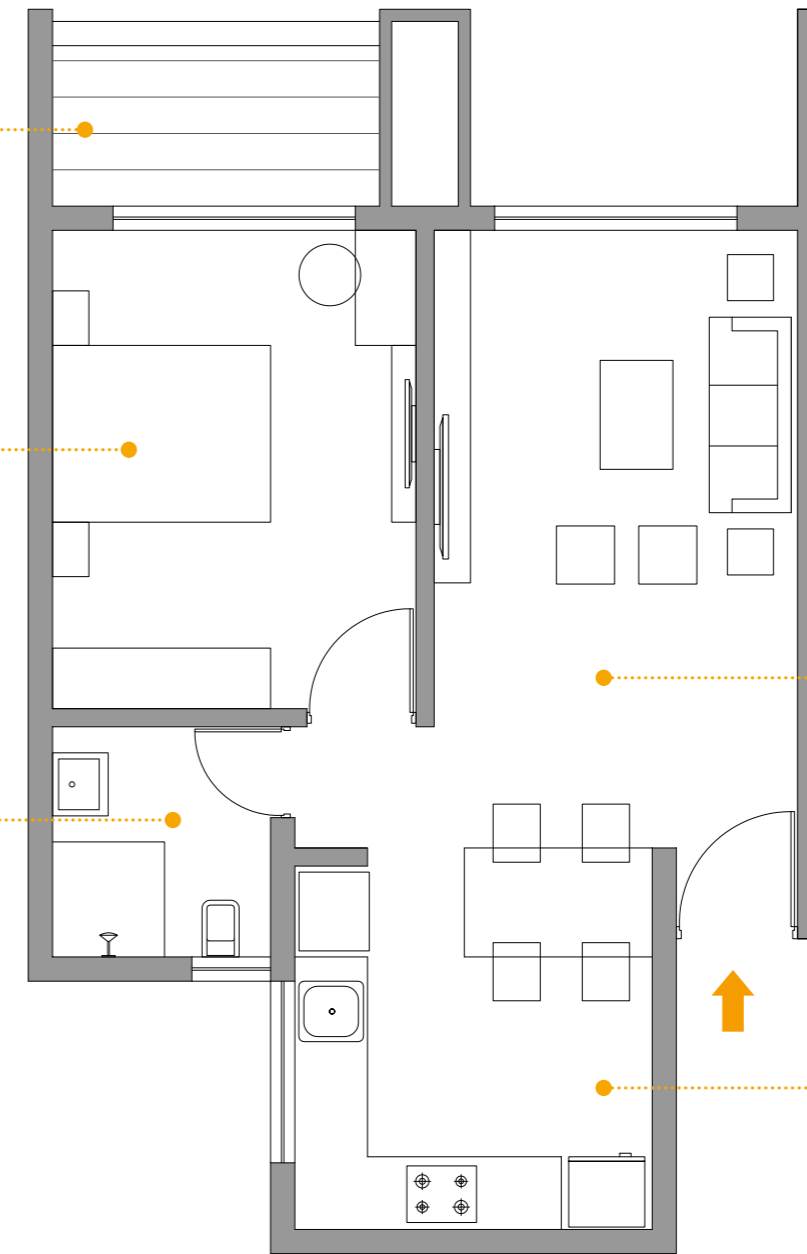
Odd Floors
642 sq. ft.



TERRACE
8' 10" X 4' 4"

BEDROOM
9' 10" X 13' 0"

TOILET
5' 11" X 6' 3"



LIVING + DINING
9' 10" X 16' 9"

KITCHEN
9' 8" X 9' 10"

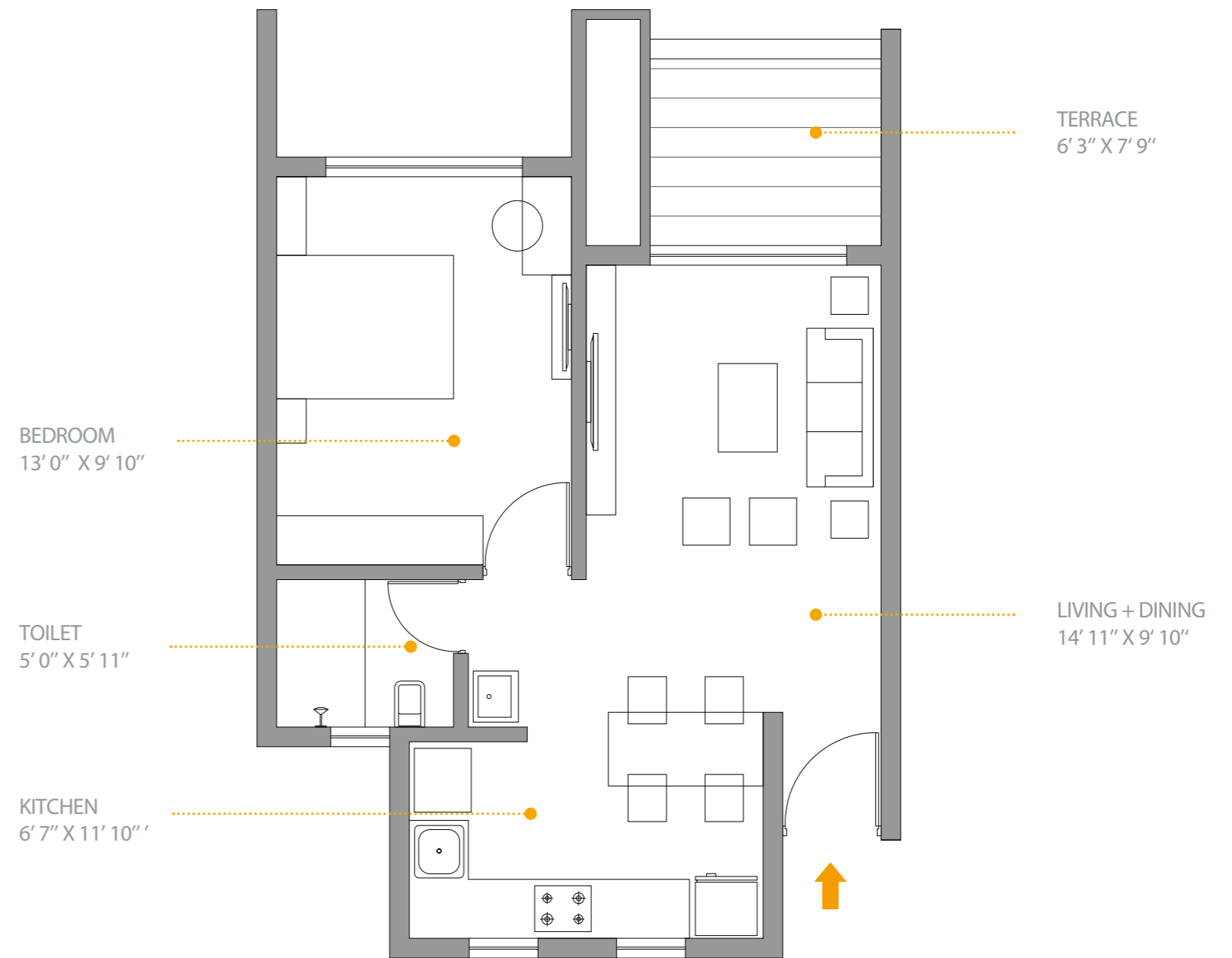
CARPET AREA
456 sq. ft.

TERRACE AREA
38 sq. ft.

TOTAL AREA
642 sq. ft.

1 BHK

Odd Floors
620 sq. ft.



BEDROOM
13' 0" X 9' 10"

TOILET
5' 0" X 5' 11"

KITCHEN
6' 7" X 11' 10"

TERRACE
6' 3" X 7' 9"

LIVING + DINING
14' 11" X 9' 10"

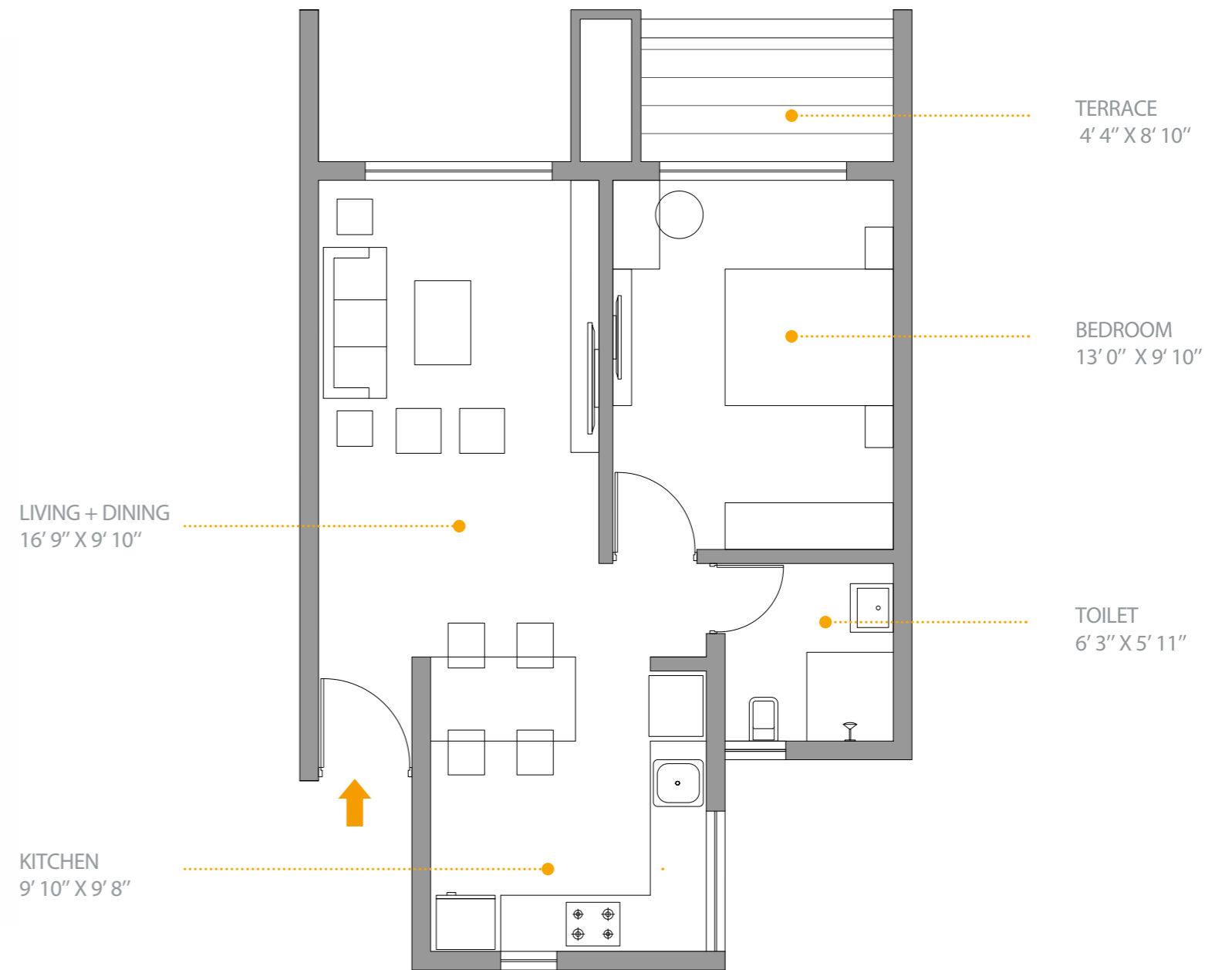
CARPET AREA
429 sq. ft.

TERRACE AREA
48 sq. ft.

TOTAL AREA
620 sq. ft.

1 BHK

Odd Floors
650 sq. ft.



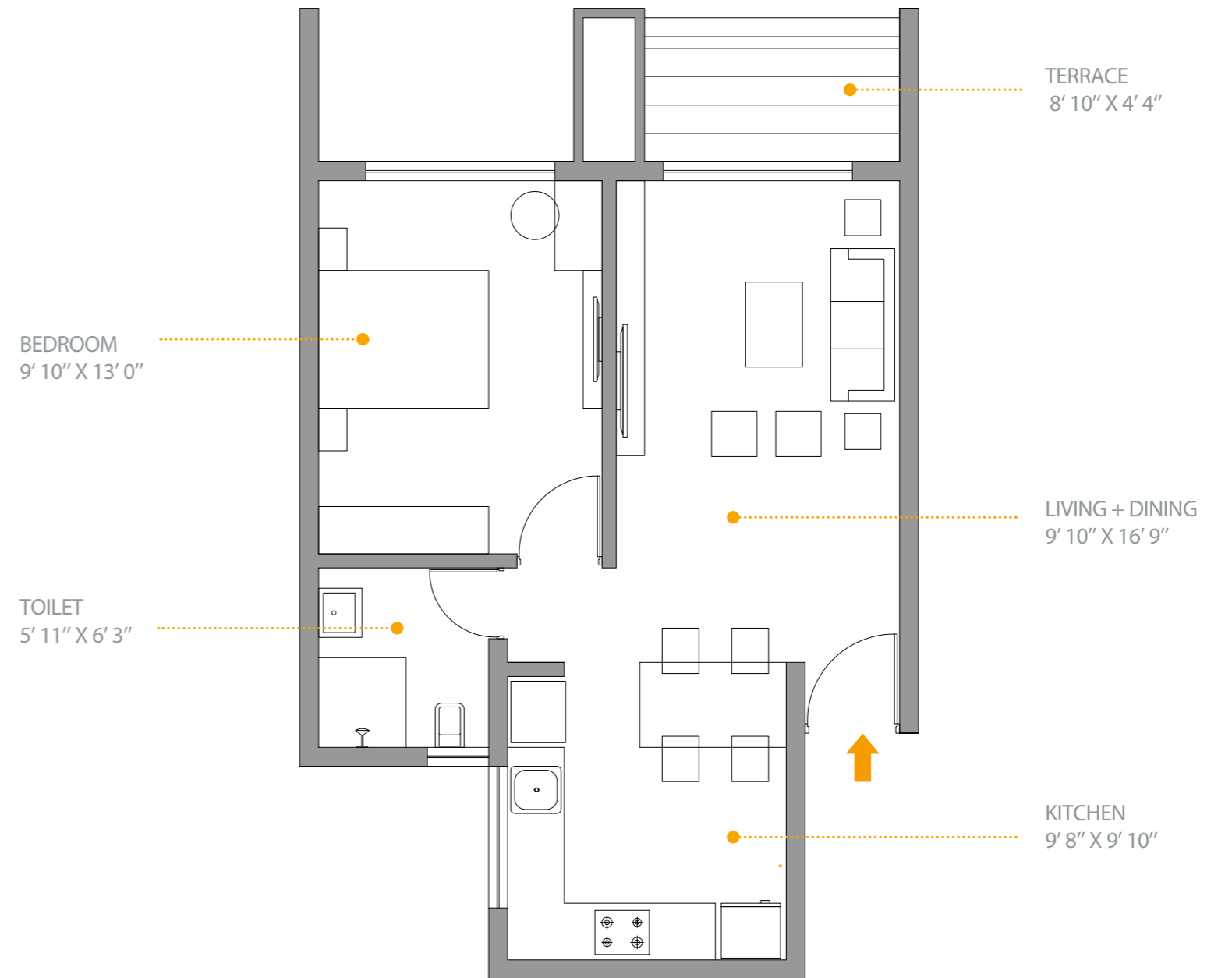
CARPET AREA
462 sq. ft.

TERRACE AREA
38 sq. ft.

TOTAL AREA
650 sq. ft.

1 BHK

Even Floors
642 sq. ft.



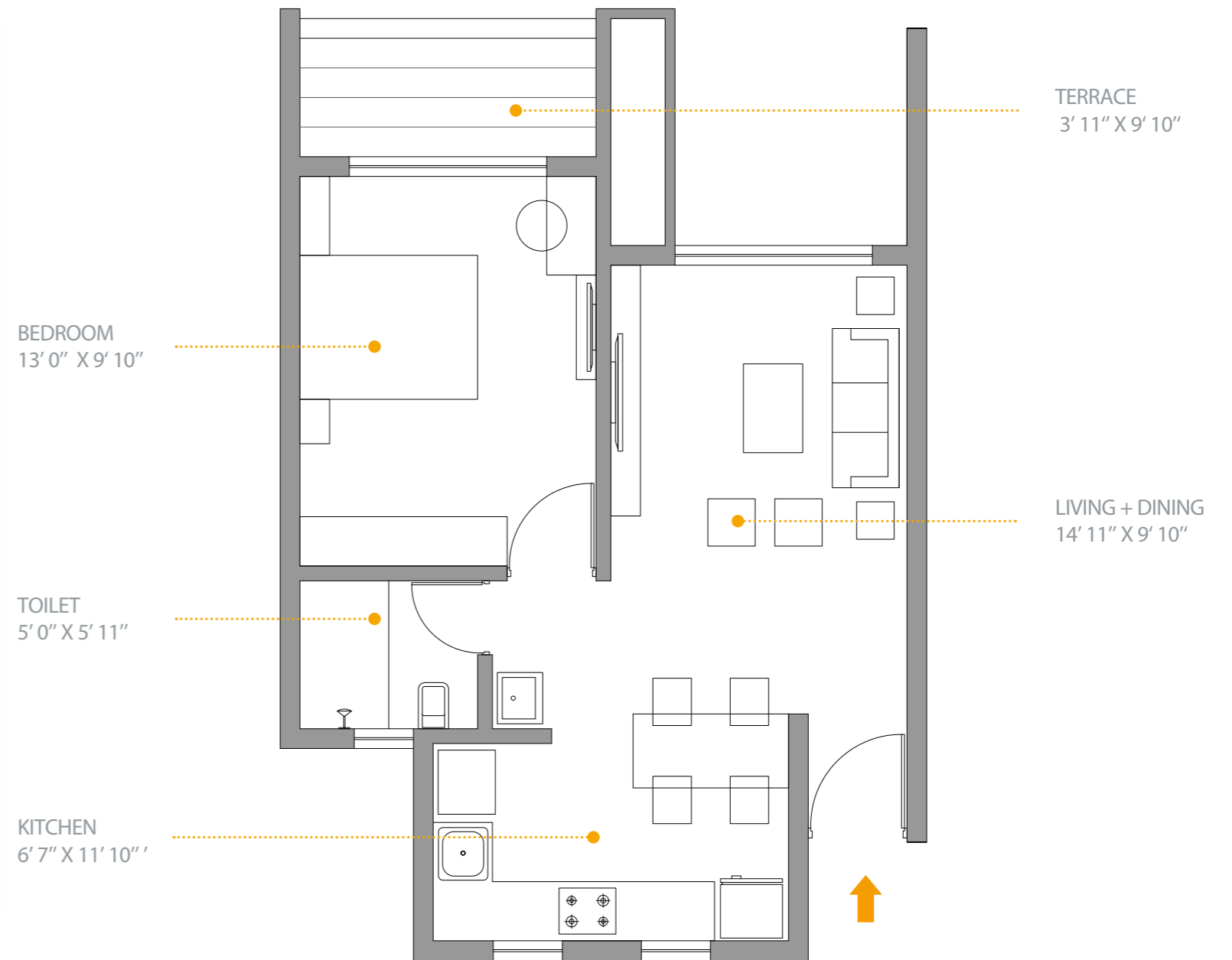
CARPET AREA
456 sq. ft.

TERRACE AREA
38 sq. ft.

TOTAL AREA
642 sq. ft.

1 BHK

Even Floors
607 sq. ft.



CARPET AREA
428 sq. ft.

TERRACE AREA
39 sq. ft.

TOTAL AREA
607 sq. ft.

1 BHK

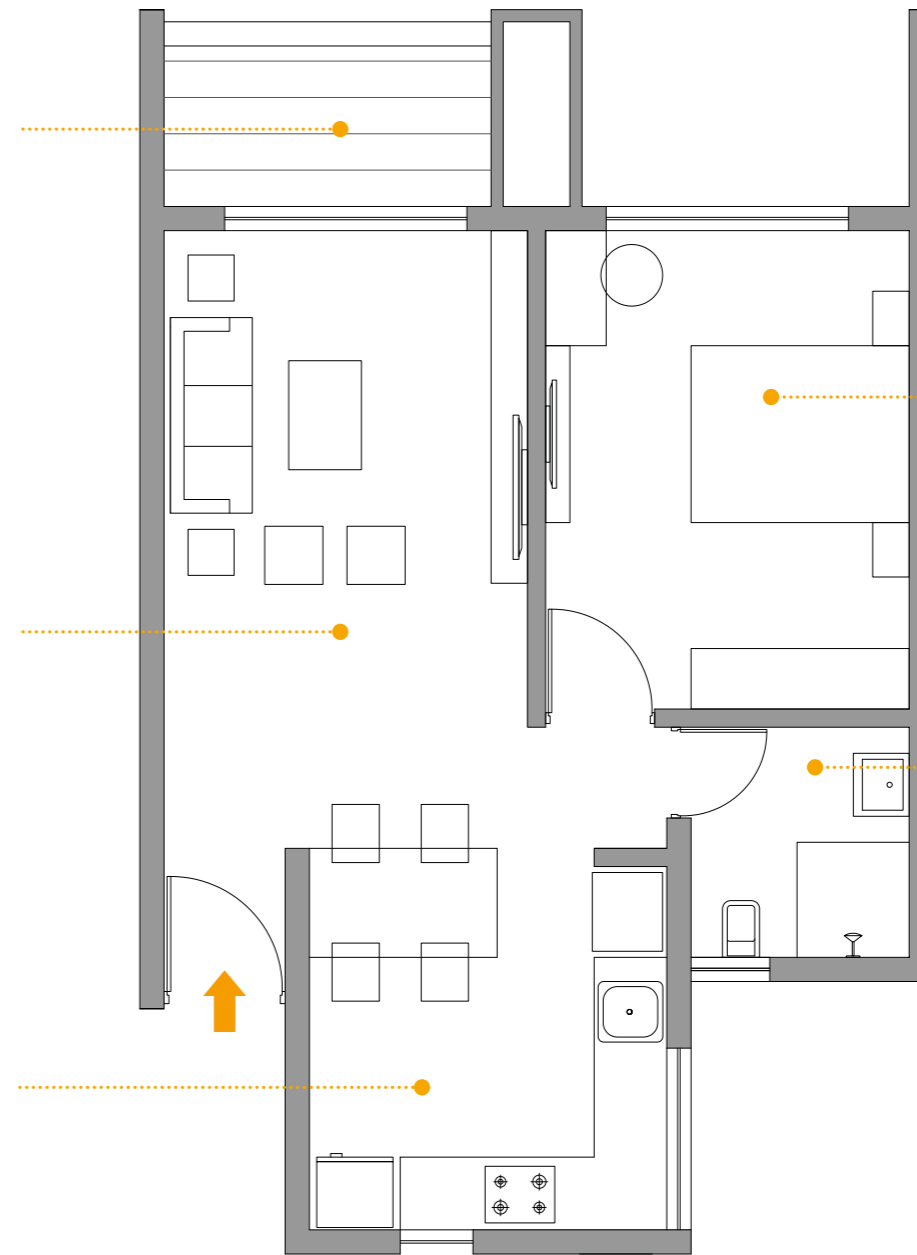
Even Floors
650 sq. ft.



TERRACE
4' 4" X 8' 10"

LIVING + DINING
16' 9" X 9' 10"

KITCHEN
9' 10" X 9' 8"



BEDROOM
13' 0" X 9' 10"

TOILET
6' 3" X 5' 11"

CARPET AREA
462 sq. ft.

TERRACE AREA
38 sq. ft.

TOTAL AREA
650 sq. ft.

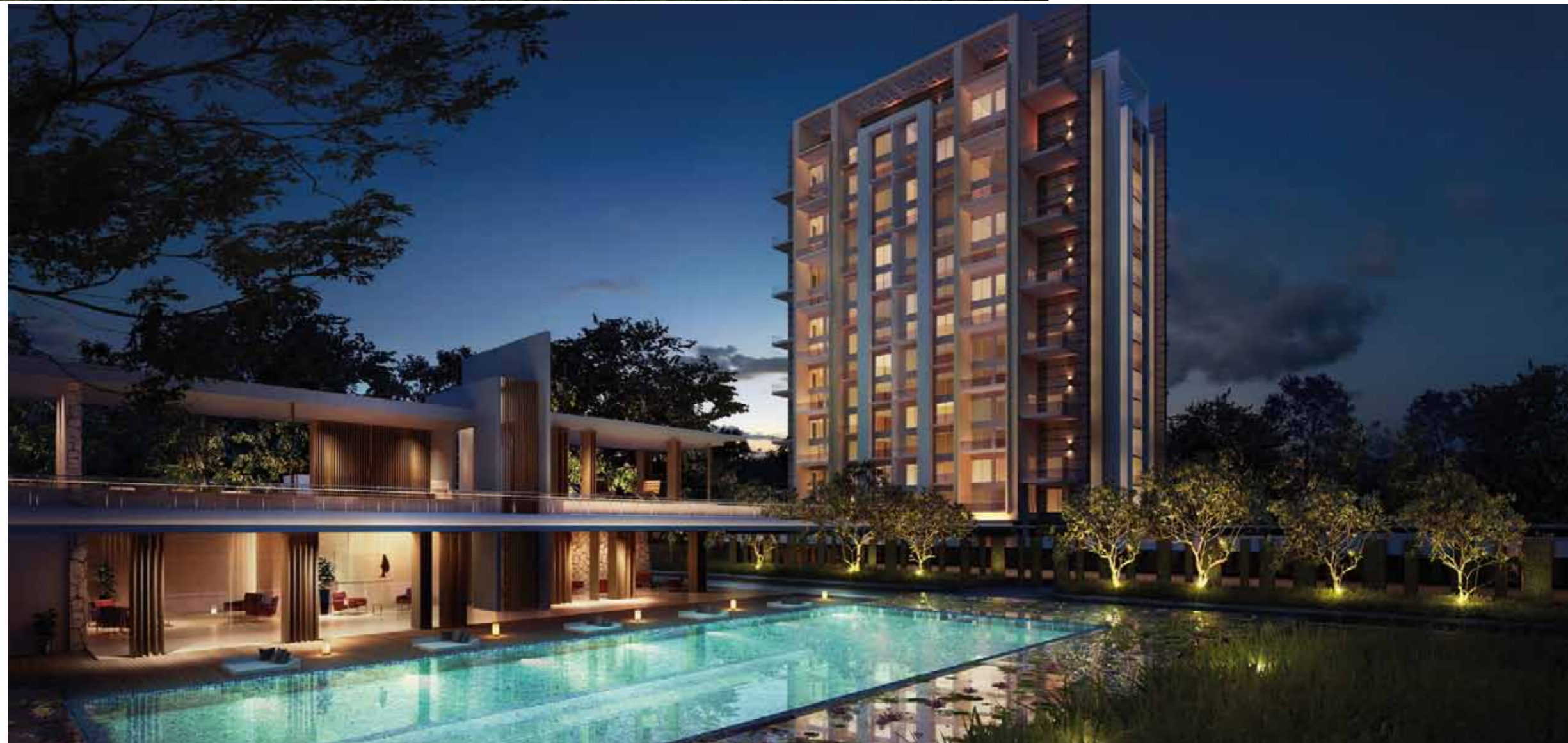


Manas Lake has an abundance of open space, a whopping 70%.

The Central Park – a lush green piece of land that is visible from one end to the other, and lies at the heart of the project. Apart from this, the 70 percent of open spaces at SKYi Manas Lake are populated by some great ideas.

An independent professionally managed club spread over 40,000 sq.ft. space that explores new grounds in high living and community building

The SKYi Club has been conceptualised as the epicentre of a plush social within the township. It's not just a space that gets residents together, it also presents great opportunities to enjoy the highlife, day in, day out.



Your daily needs at close quarters

At SKYi Manas Lake, we aim to bring you a peaceful and tranquil lifestyle without the hassles of worrying about everyday life. For this reason, we have ensured that most daily necessities are provided in the neighbourhood of the project itself.



Thoughtful Design

At every step you take at Manas Lake, there is a thought we have put in to make a better designed dwelling

Fact File

LIVING

- Elegant main door
- Flooring of 2' X 2' vitrified tiles with skirting
- Internal walls with smooth POP finish & high quality paint
- Ceramic tiles for terraces
- TV and telephone points
- Sufficient light points

BEDROOM

- Vitrified tiles in the other bedrooms
- TV and telephone points in the master bedroom
- M S Grill railing for terraces

KITCHEN

- Granite kitchen platform with stainless steel sink
- Glazed ceramic tile up to 2 ft. above the platform
- Additional electrical points for appliances
- Washing Machine/Dish washer ready space

BATHROOM

- Neat toilet designs for best space utilization
- Glazed ceramic tiles upto 7 ft.
- Marble stone fascia for door openings
- Premium fittings & sanitary ware
- Single lever hot & cold mixer with overhead shower
- Pest prevention trap
- Provision for exhaust fan & geyser

GREEN DESIGN

- Water treatment plant
- Organic Waste Converter
- Drip & sprinkler irrigation system
- Rain water harvesting
- Thermal insulation treatment for roof top terraces
- Optimum flow water fittings
- Water Recycling
- Energy Saving Fittings for common areas

SAFETY & SECURITY

- Video door phone
- Firefighting equipment
- Seismic resistant design
- CCTV surveillance
- Access control at lobby level of the tower
- Security personnel at key entry and exit points
- Stretcher Lift
- Fire staircase and Refuge Area for Emergency

FEATURES/UTILITIES

- Power backup of 1 KVA for each unit
- Power backup for all essential common facilities
- Garbage chutes on every floor
- Anti-termite treatment
- Impressive main entrance & lobbies
- 100% car parking
- Clean Water supply
- Automatic speed elevators with power backup
- Concealed copper wiring with branded modular
- Powder coated aluminium sliding windows
- Mosquito mesh for windows

Terms and Conditions

This brochure and its contents are purely conceptual and merely to assist the reader to navigate into images, artist's impression, architectural drawings (not to scale), area, price & other information only, which may vary at the sole discretion of Energgia Skyi Ventures LLP, in accordance with the applicable laws. All information contained herein is provided for guidance purposes and does not constitute any invitation to offer/offer for the Purchaser. None of the objects/representations mentioned herein constitute a legally binding agreement or representation. Energgia Skyi Ventures LLP does not take responsibility that may arise from any information given in this brochure. It may please be noted that the contractual rights and obligations between the Purchaser and Energgia Skyi Ventures LLP shall absolutely be governed by the Agreement for Sale and other ancillary deeds and documents, as may be executed, between them and/or any third parties. The Purchaser is requested to appraise himself about the terms and conditions contained therein with the help of an independent legal and tax advisor.

The present brochure pertains to the entire project ("Manas Lake Project") development envisaged by Energgia Skyi Ventures LLP for the project development spread over 70 Acres (approximately) which shall be planned and developed in various phases, subject to the requisite permissions/approvals from appropriate competent authorities. However, the Purchaser is requested to note that, as on date, the layout only for Phase I, has been sanctioned/approved and the construction/ development plan for the remaining land parcels is pending approval. Energgia Skyi Ventures LLP is in process of preparing the development plan for the remaining phases and reserves its right to prepare, add, delete, alter, modify or in any manner change the plans, specifications, images, architectural drawings, prices, data & other information in its endeavor to make improvements as and when required. Energgia Skyi Ventures LLP reserves its right to undertake the aforesaid activities without prior intimation and/or notice to the Purchaser.

The Purchaser is requested to note that (i) location maps of Manas Lake Project, its neighboring areas, and Pune City are not to scale and are for reference purpose only, (ii) neighborhood offerings located outside of Manas Lake Project, are for depiction purposes only and are not part of the Manas Lake Project, and (iii) the actual elevation of the flats/units and/or building may vary from the Artist's impressions as depicted herein. It may further be noted that the pricing of the flats/units quoted by Energgia Skyi Ventures LLP does not include the costs

of furniture, floor coverings, curtains, mirrors, wall hangings, light fittings, furnishings etc. as depicted in brochure and/or otherwise. The brands and make of the material used in the flats/units are indicative and the material actually used may be of equivalent make & quality as per availability at the relevant point of time.

It is the responsibility of the Purchaser to evaluate the accuracy, completeness and usefulness of any data, opinions, advice, services or other information provided herein or by the distributor(s) hereof. All information contained herein is distributed with the understanding that the authors, publishers, and distributors, assume no liability whatsoever in connection with its use. We request the Purchasers to consult independent legal and/or tax advisor or real estate expert with respect to their investment / purchase of the flats/units.

Energija Skyi Ventures LLP at its sole discretion intends to develop various amenities and facilities in the Manas Lake Project inter alia including hospitality facilities viz. the Club etc., educational facilities, entertainment facilities, healthcare facilities and commercial spaces etc., which shall be exclusively and absolutely owned by Energgia Skyi Ventures LLP and/or its representatives. The aforesaid amenities and facilities will be managed and maintained exclusively by Energgia Skyi Ventures LLP and/or its representatives. It is further clarified that the abovementioned amenities and facilities in the Manas Lake Project shall be offered to the residents of Manas Lake project and also to the outsiders, subject to the terms and conditions to be laid down by Energgia Skyi Ventures LLP and also subject to the payment of the fees/charges etc., as may be prescribed.

SKYI logo is a registered trademark and Energgia Skyi Ventures LLP has been permitted to use the same for the Manas Lake Project. The contents, service marks, graphic images, layout, information, text, opinions and material contained in this brochure are the exclusive property of Energgia Skyi Ventures LLP and are protected by copyright and intellectual property laws. No person shall use, copy, reproduce, distribute, imitate, publish, display, modify, create derivative works or database, use, transmit, exploit, sell or distribute the same in whole or in part or any part thereof in any form or by any means, electronic, mechanical, photocopy, recording or otherwise without written permission from Energgia Skyi Ventures LLP.



.....
*SKYi Manas Lake
Site Address*

Gatt No. 218
Manas Lake, Paud road,
Bhugaon, Pune – 412 115

020 6790 6790

.....
The Developer

Ennergia Skyi Ventures LLP

.....
Corporate Office

Shivana, Above Royal
Enfield Showroom,
Bhusari Colony, Paud Road,
Kothrud, Pune - 411 038
Tel: 020 2528 0029

.....
Registered Office

Sugat Residency, Plot No. 21,
S. No. 77 / 2 / 16, Bhusari Colony,
Kothrud, Pune - 411 038.

skyi.com

This brochure is purely conceptual and not a legal offering. Ennergia SKYi Ventures LLP reserves the right to add, delete or alter any details and/or specifications in its endeavour to make improvements as and when required. The images, layouts and maps presented in this brochure are for indicative purposes only. They may not be to scale. SKYi logo is a registered trademark of SDPPL. All other trademarks are the property of their respective owners. All rights reserved. No part of this brochure may be reproduced, stored in a retrieval system, or transmitted, in any form or by any means, electronic, mechanical, photocopying, recording, or otherwise, without the prior permission of Ennergia SKYi Ventures LLP.