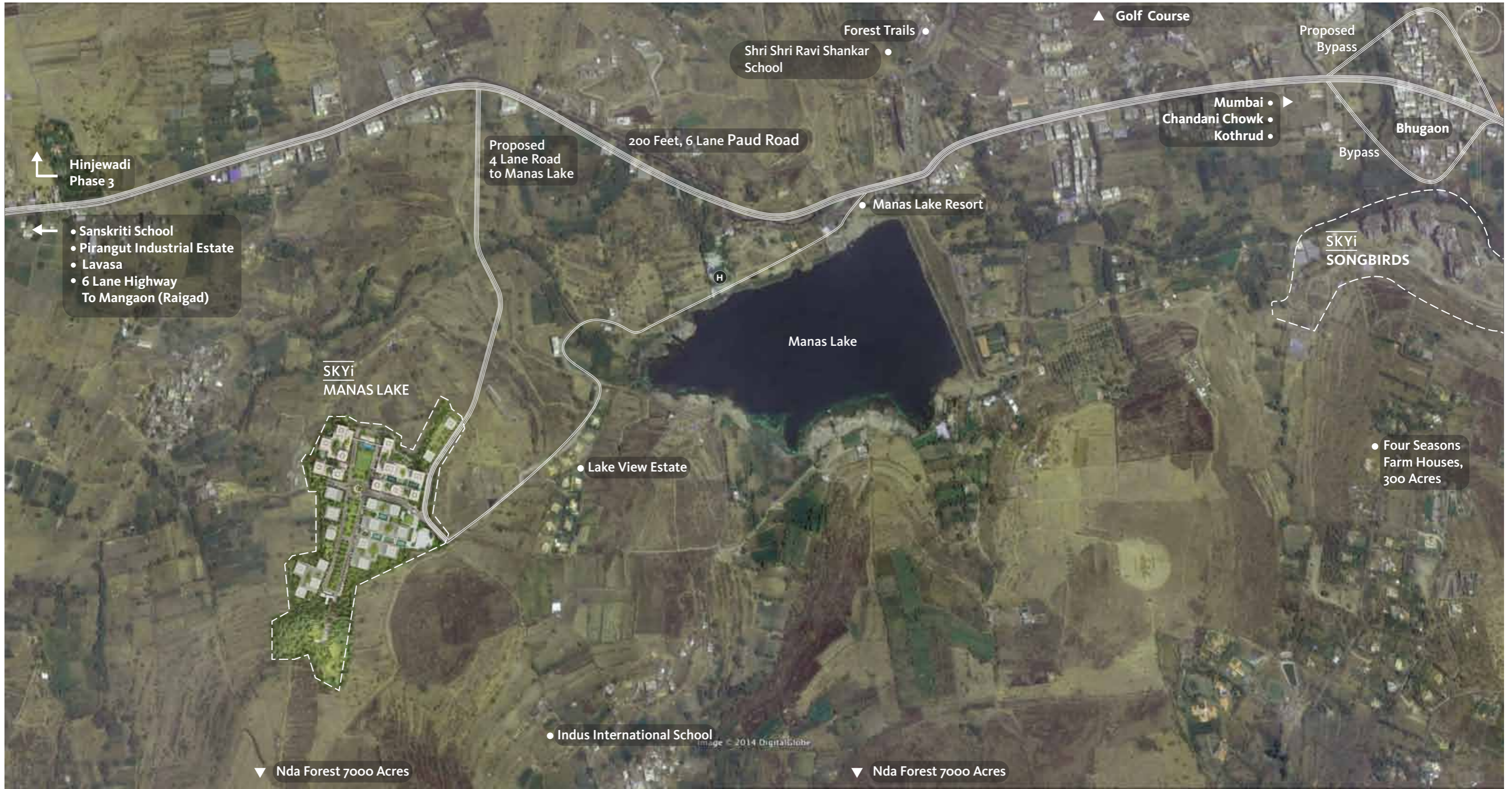




SKYi
MANAS LAKE

iris tower 01
2 & 3 BHK APARTMENTS





SKYi MANAS LAKE



Artist impression, map not to scale

Location Map

The Residences

- IRIS : 2 & 3 BHK Premium Apartment
- ● ● ● Phase 1

Amenities & Features

- | | | | |
|-----------------------------|----------------------------------|-------------------------------|--|
| A Main Access Road | D Central Park | I Multi Purpose Ground | N Bird Watching Pod |
| B Main Entrance Gate | E 4 Lane Internal Road | J Wetland Park | O Sports Facilities
· Tennis Court
· Futsal Court
· Basketball Court |
| C Club* | F Proposed 4 Lane Road | K Picnic Lawn | P Toddler Play Area |
| | G Walking / Jogging Track | L Family Pavillion | |
| | H Future Development | M Family Seating Area | |

* Terms & Conditions apply

Odd Floor Plan

101, 301, 501,
701, 901

 2 BHK

CARPET AREA
689 sq. ft.

TERRACE AREA
87 sq. ft.

TOTAL AREA
1009 sq. ft.

 3 BHK

CARPET AREA
1084 sq. ft.

TERRACE AREA
138 sq. ft.

TOTAL AREA
1589 sq. ft.

106, 306, 506,
706, 906

102, 302, 502,
702, 902

105, 305, 505,
705, 905

103, 303, 503,
703, 903

104, 304,
504, 904



Even Floor Plan

201, 401, 601,
801, 1001



2 BHK

CARPET AREA
686 sq. ft.

TERRACE AREA
64 sq. ft.

TOTAL AREA
975 sq. ft.

3 BHK

CARPET AREA
1084 sq. ft.

TERRACE AREA
141 sq. ft.

TOTAL AREA
1593 sq. ft.

206, 406, 606,
806, 1006

205, 405, 605,
805, 1005

202, 402, 602,
802, 1002

203, 403, 603,
803, 1003

204, 404, 604,
804, 1004



Seventh Floor Plan


2 BHK

CARPET AREA
689 sq. ft.

TERRACE AREA
87 sq. ft.

TOTAL AREA
1009 sq. ft.


3 BHK

CARPET AREA
1084 sq. ft.

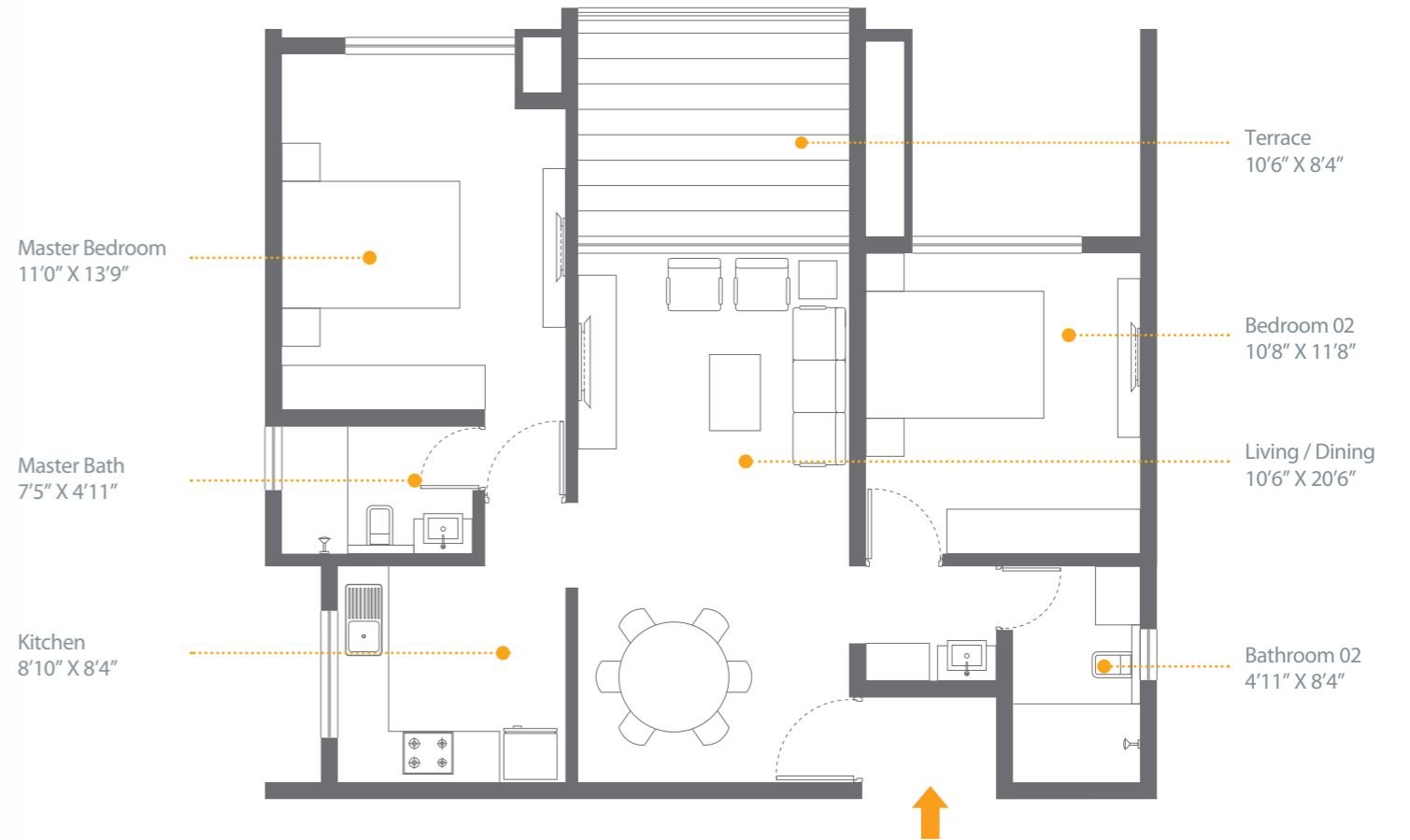
TERRACE AREA
138 sq. ft.

TOTAL AREA
1589 sq. ft.



2 BHK

ODD FLOORS
1009 sq. ft.



CARPET AREA
689 sq. ft.

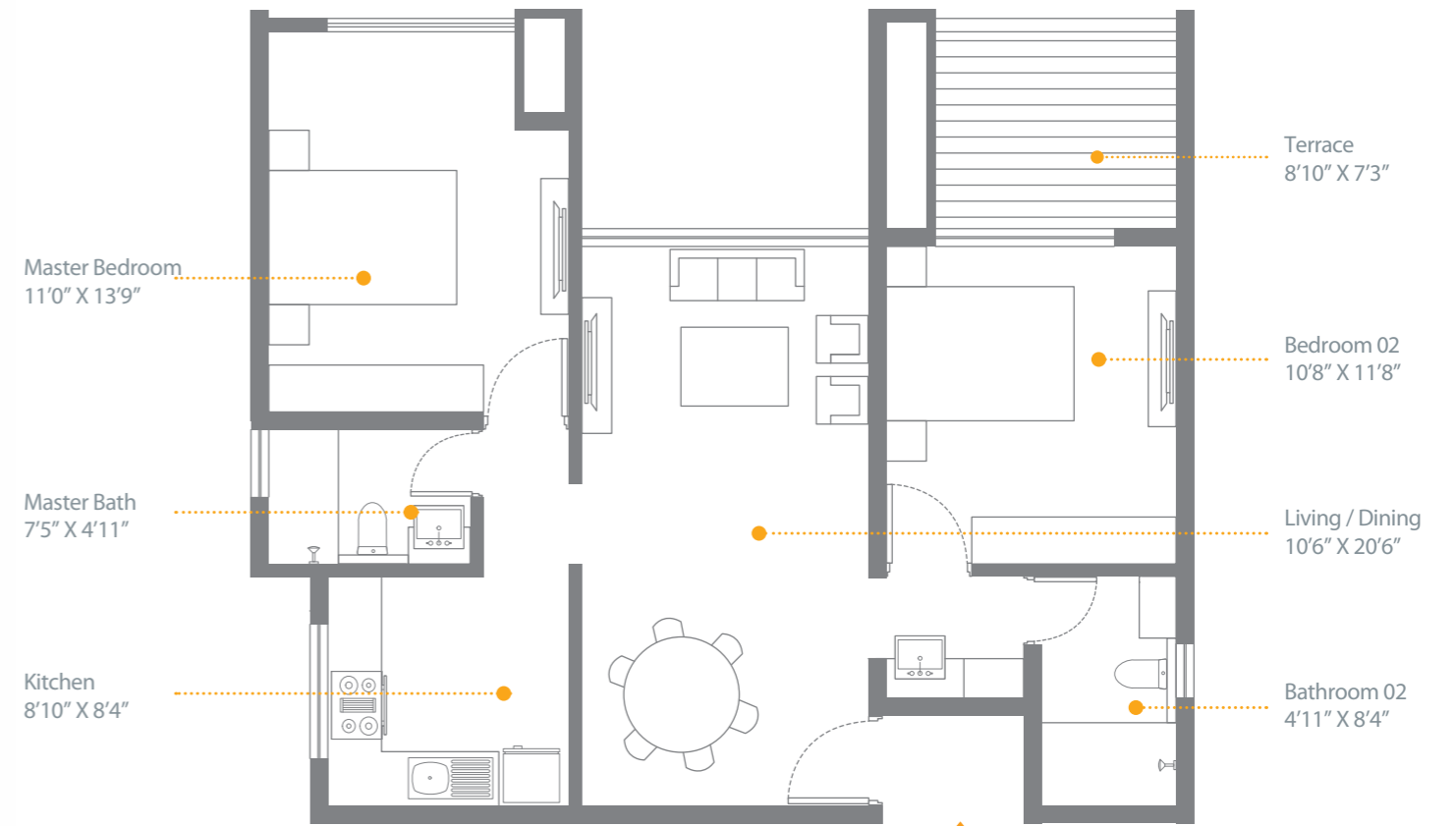
TERRACE AREA
87 sq. ft.

TOTAL AREA
1009 sq. ft.



2 BHK

EVEN FLOORS
975 sq. ft.



CARPET AREA

686 sq. ft.

TERRACE AREA

64 sq. ft.

TOTAL AREA

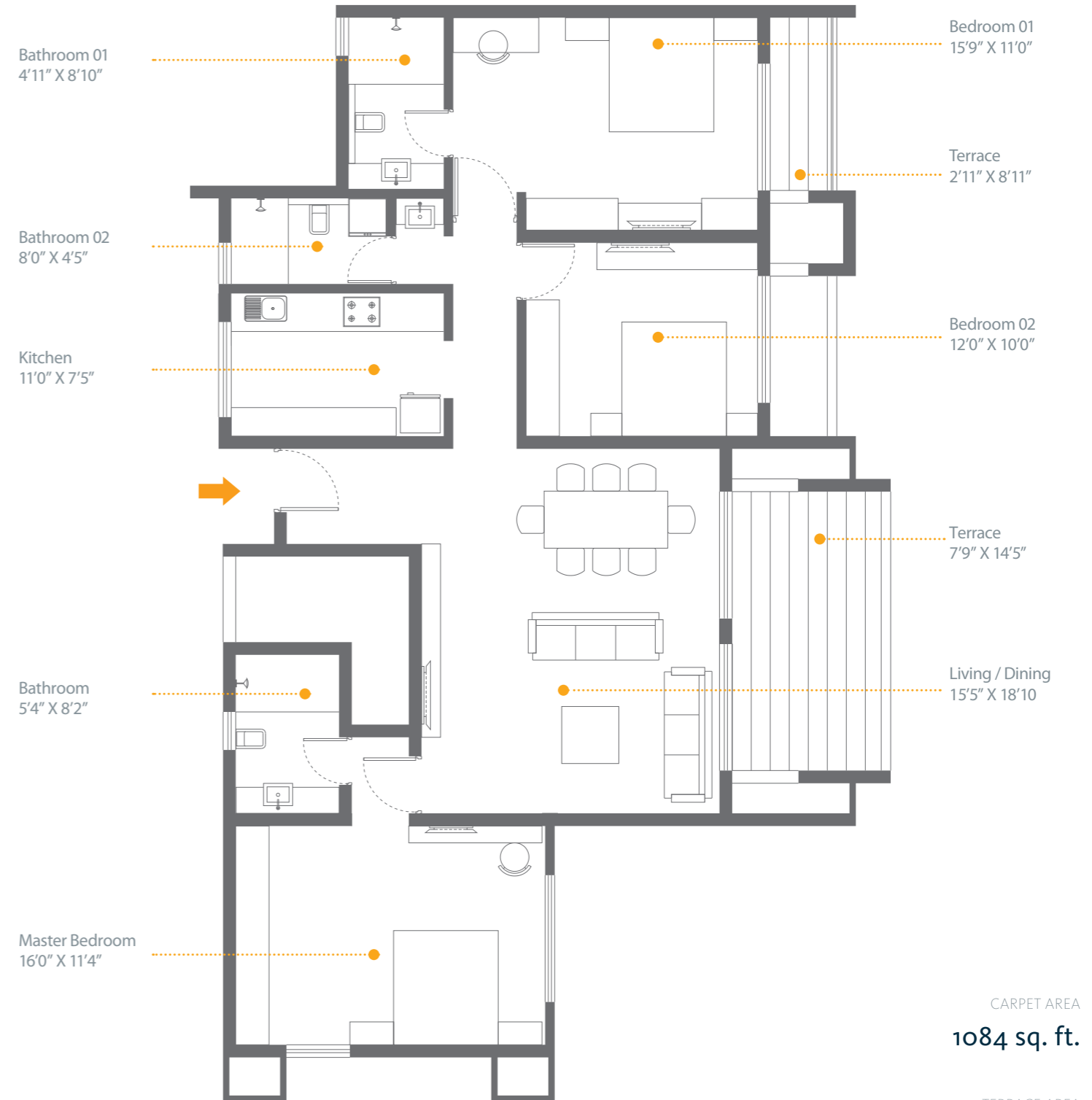
975 sq. ft.



3 BHK

ODD FLOORS

1589 sq. ft.



CARPET AREA
1084 sq. ft.

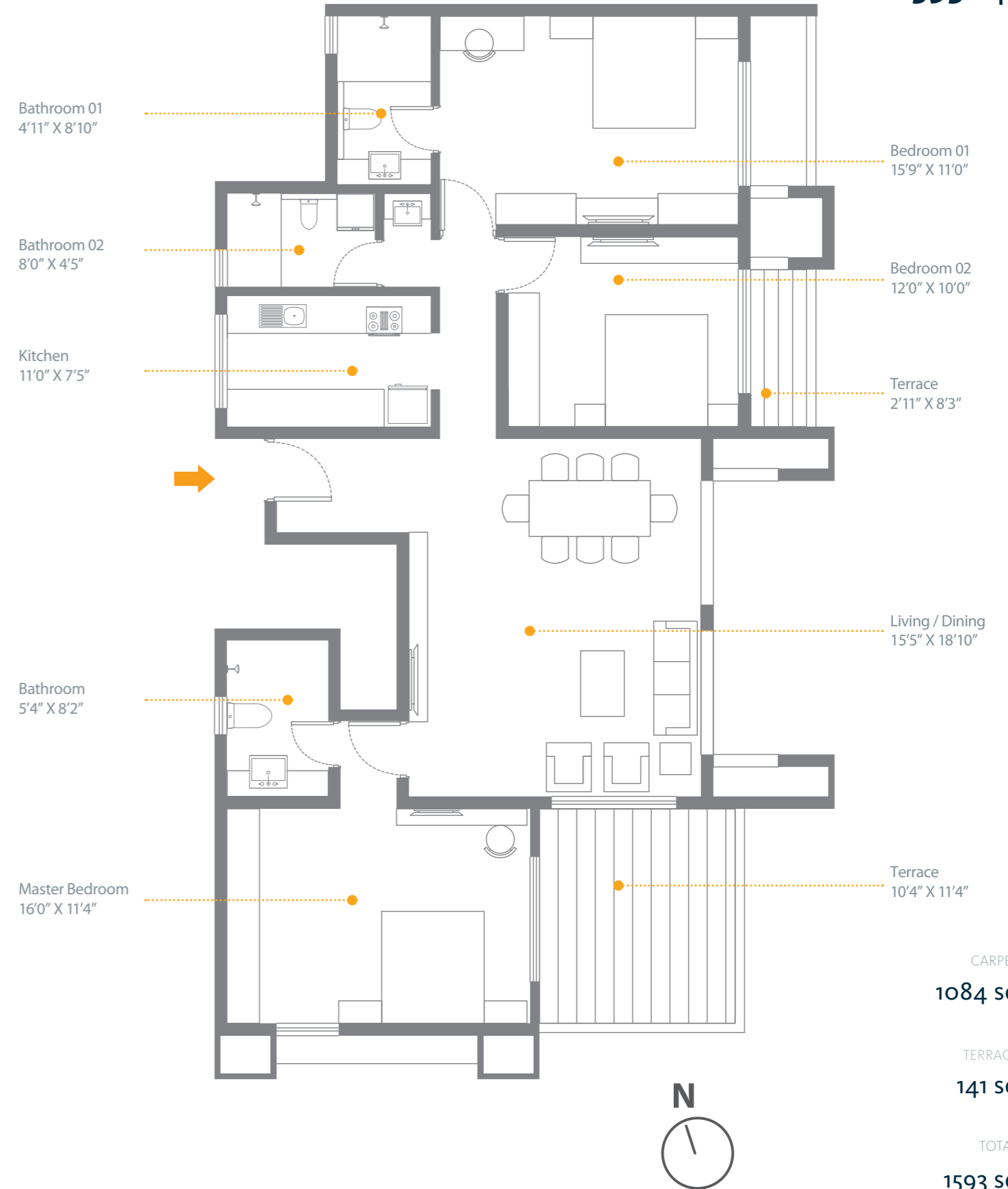
TERRACE AREA
138 sq. ft.

TOTAL AREA
1589 sq. ft.

3 BHK

EVEN FLOORS

1593 sq. ft.



CARPET AREA
1084 sq. ft.

TERRACE AREA
141 sq. ft.

TOTAL AREA
1593 sq. ft.

Fact File

LIVING

- Elegant main door
- Flooring of 2' x 2' vitrified tiles with skirting
- Internal walls with smooth POP finish and high quality plastic paint
- TV and telephone points
- Sufficient light points
- Powder coated sliding doors and windows with safety grills and mosquito nets
- Ceramic tiles for terraces
- Glass railings
- Light and plug points in terrace

BEDROOM

- 2' x 2' vitrified tiles with skirting
- TV point in master bedroom
- Sliding windows with safety grills and mosquito nets
- Internal walls with smooth POP finish and high quality plastic paint
- MS grill railings

KITCHEN

- Granite kitchen platform with stainless steel sink
- 2' x 2' vitrified tiles with skirting
- Glazed ceramic tiles up to 2 feet above the platform
- Additional electrical points for appliances

BATHROOM

- Glazed ceramic tiles up to 7 feet
- Marble stone fascia for door openings
- Premium fittings and sanitary wares
- Single lever hot and cold mixer with overhead shower
- Hot and cold water mixer for master bedroom wash basin
- Pest prevention trap
- Provision for exhaust fan and geyser

GREEN DESIGN

- Water treatment plant
- Sewage treatment plant
- Organic waste converter
- Rain water harvesting
- Water recycling
- Energy saving fittings for common areas
- Well lit and ventilated apartments
- Use of solar energy for common areas
- Optimum flow water fittings

SAFETY & SECURITY

- Gated Community
- Video door phone
- Safety grills for windows
- Firefighting equipment
- CCTV surveillance
- Intercom facility to access security
- Security personnel at key entry and exit points
- Stretcher Lift
- Fire staircase and refuge area for emergency
- Seismic resistant design

FEATURES/UTILITIES

- Power backup of 1 KVA for each unit
- Power backup for all essential common facilities
- Garbage chutes on every floor
- Anti-termite treatment
- Impressive main entrance & lobbies
- Ample parking space for residents & visitors
- Sanitation facility for drivers & servants
- Automatic speed elevators with power backup
- Concealed copper wiring with branded modular electrical fittings
- Sufficient electrical points
- Powder coated aluminum sliding windows
- Mosquito mesh for windows and sliding doors



.....
SKYi Manas Lake
Site Address

Gatt No. 218
Manas Lake, Paud road,
Bhugaon, Pune – 412 115

020 6790 6790

.....
The Developer

Ennergia Skyi Ventures LLP

.....
Corporate Office

Shivana, Above Royal
Enfield Showroom,
Bhusari Colony, Paud Road,
Kothrud, Pune - 411 038
Tel: 020 2528 0029

.....
Registered Office

Sugat Residency, Plot No. 21,
S. No. 77 / 2 / 16, Bhusari Colony,
Kothrud, Pune - 411 038.

skyi.com

This brochure is purely conceptual and not a legal offering. Ennergia SKYi Ventures LLP reserves the right to add, delete or alter any details and/or specifications in its endeavour to make improvements as and when required. The images, layouts and maps presented in this brochure are for indicative purposes only. They may not be to scale. SKYi logo is a registered trademark of SDPPL. All other trademarks are the property of their respective owners. All rights reserved. No part of this brochure may be reproduced, stored in a retrieval system, or transmitted, in any form or by any means, electronic, mechanical, photocopying, recording, or otherwise, without the prior permission of Ennergia SKYi Ventures LLP.