

Balaji
Paradise
— APARTMENTS —

l u x u r y a t e v e r y c o r n e r

SRI BALAJI DEVELOPERS
VISAKHAPATNAM

BALAJI GROUP

Schools | Steel | Real Estate | Constructions
A trusted name since last 22 years



Bringing community together



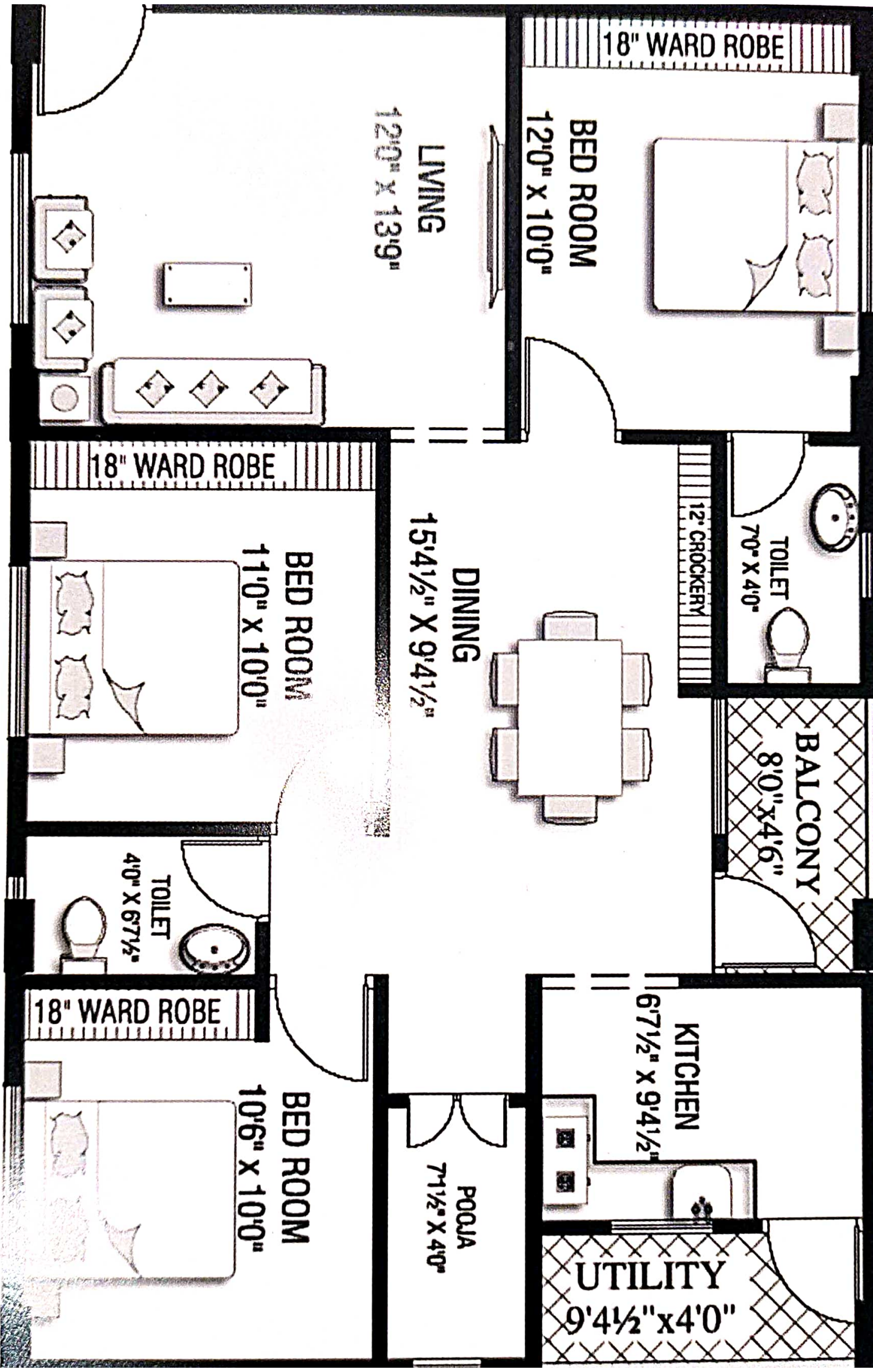
Welcome to the world
Of harmony in living

SRI BALAJI DEVELOPERS firmly believes in the fact that community is all about harmony and aims at strengthening it.

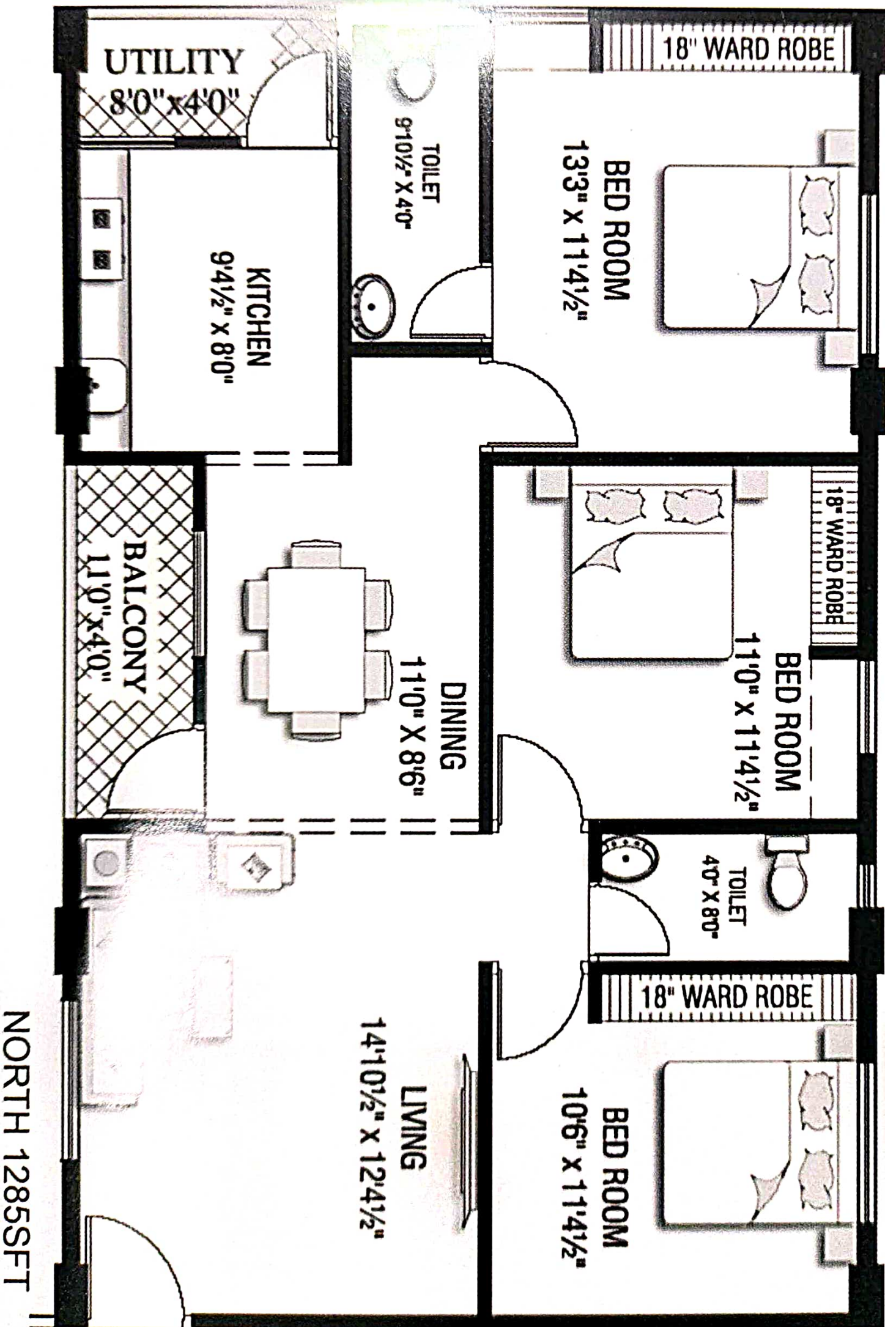
After the successful completion of various prestigious projects by the promoters, SRI BALAJI DEVELOPERS take pride in Announcing the launch of BALAJI PARADISE APARTMENTS. Comprising of 150 units. A Project that is nestled close to the abode of Lord Narasimha which entices you with its soothing presence and serene atmosphere.

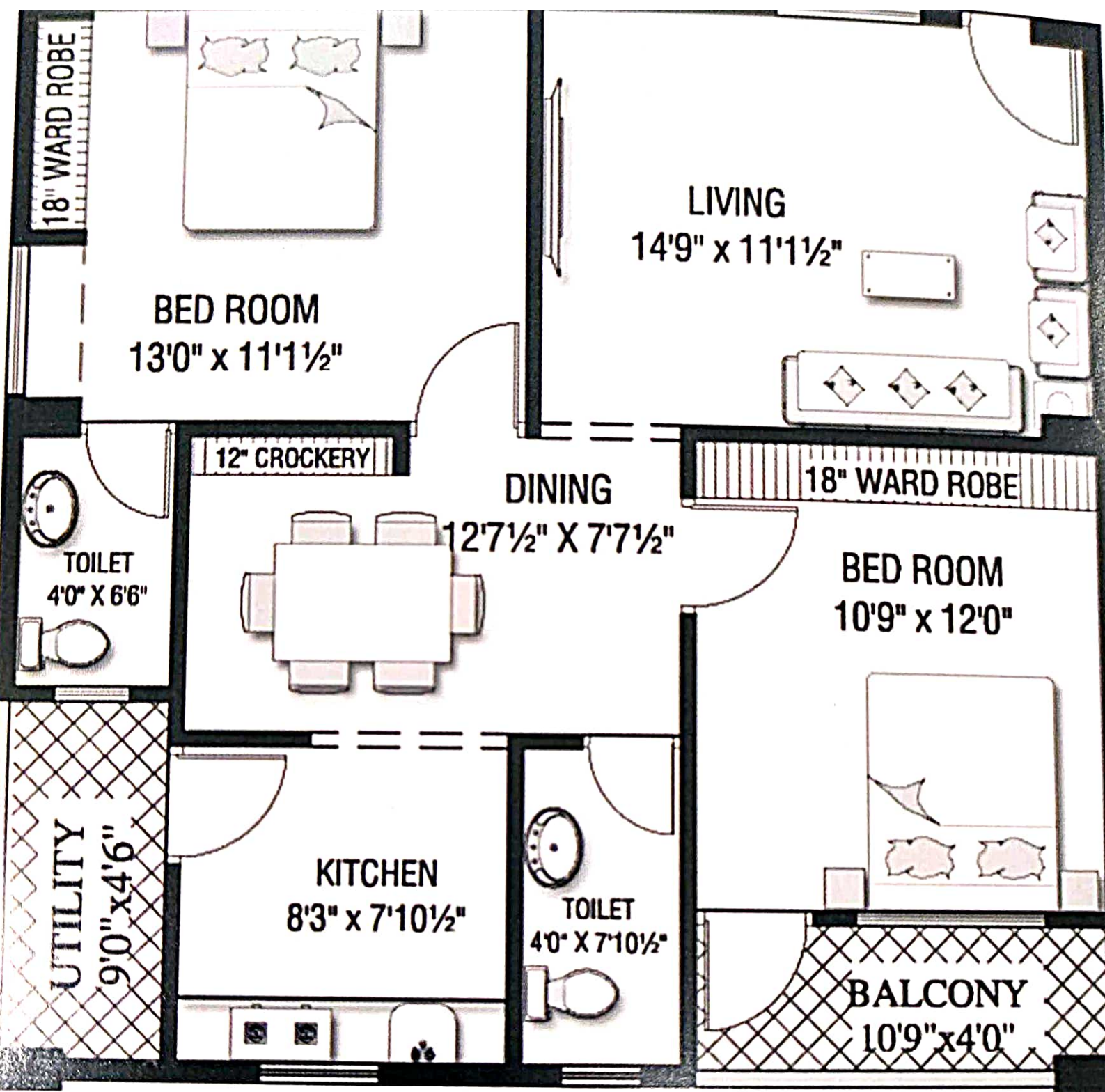
Balaji
Paradise
—APARTMENTS—





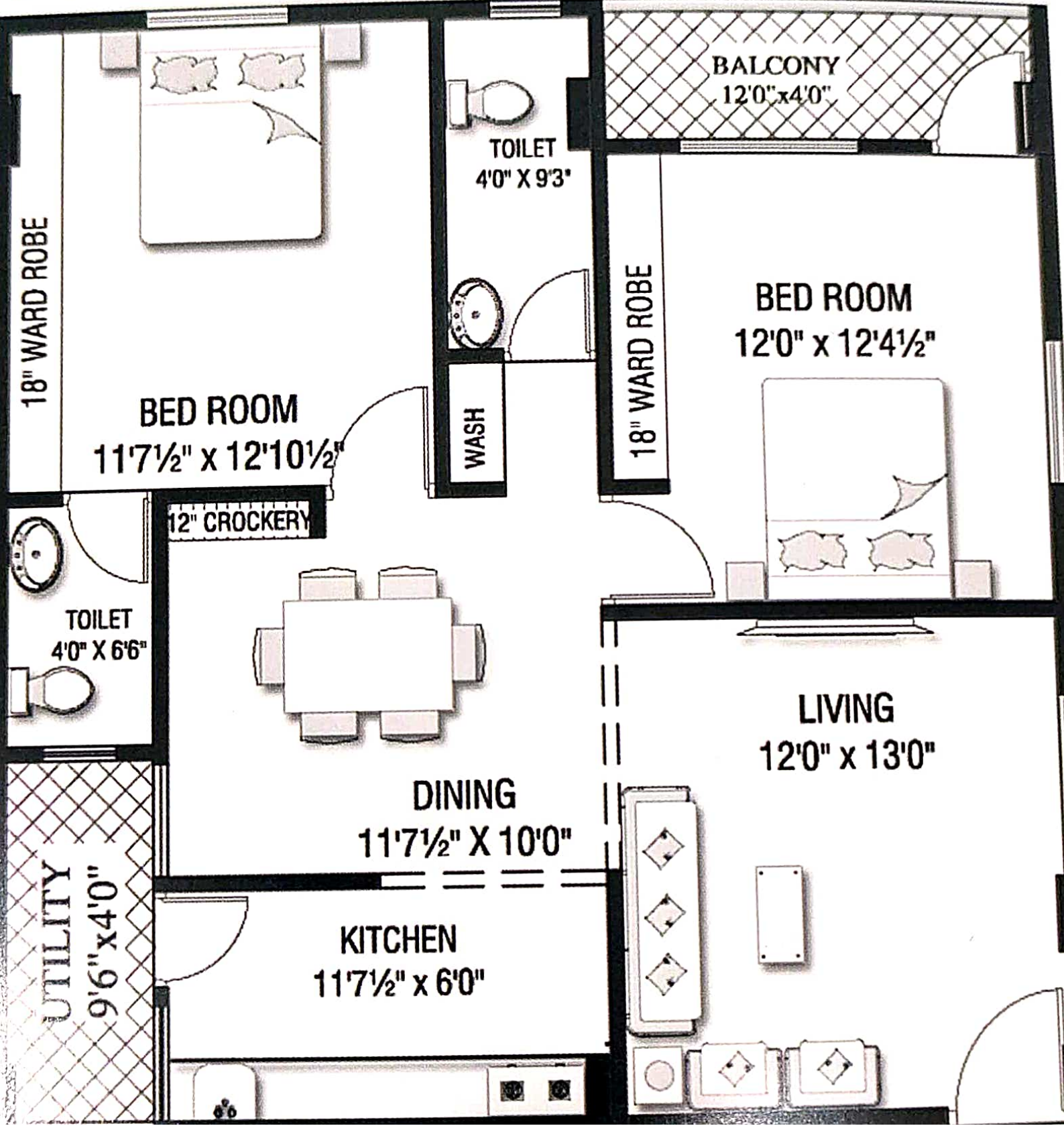
SOUTH 1245SFT





WEST 1035SFT

EAST 1115SFT



Specifications

Structure

Earthquake Resistant-RCC Framed structure in accordance with IS code. 6" External walls and 4" Internal walls with first class moulded bricks in cement mortar.

Doors

Main Doors: Well seasoned teakwood frame & Door.
Internal Doors: Well seasoned wooden frames with water proof flush door.

Windows

U.P.V.C Windows .

Flooring

2'x2' Vitrified tiles with 4" Skirting in all rooms.(Johnson or Equivalent)
1'x1' Ceramic tiles in balconies and Utility floor areas. (Johnson or Equivalent)

Electrical

Concealed copper wiring of Polycab or equivalent. Adequate Power points with modular switches in all rooms & Kitchen with MCB of standard make. Power points for AC in all Bedrooms, refrigerator and washing machine.

Kitchen

Glazed Ceramic tile dado upto 2' height above Kitchen platform. Granite platform with S.S sink. Provision for Municipal and bore water. Provision for RO.

Toilets

Tiles dado upto 6' Height, Wall hung Wash basin of Hindware, or equivalent make (White Colour). Floor mounted W.C of Hindware or equivalent make.(White Colour) Hot & cold Wall-mixer with shower for master bedroom. All C.P. fittings Hindware or equivalent make. Provision for water heaters. All Internal plumbing of UPVC pipes of ISI Standard company.

Painting

Two Coats Emulsion paint over two coats of putty for Interiors. Water proof apex paint over putty for exteriors.

Lift

8 Passengers lift,(Johnson/Equivalent), 4lifts total.and one Cargo lift.

Communication

Intercom facility to all the units connecting security. Telephone, cable TV & Internet for Living & master bed rooms.

Generator Backup

100% For all common amenities. 5 Light points & 3 Fan points per flat.

Security

Building under CC Surveillance.

Amenities

Banquet hall ,Gym, Recreation hall, Guest room, Shuttle Court,Children play area.

To Vepagunta

Location Plan

Balaji
Paradise
— APARTMENTS —

80' Road

Sujatha nagar Jn.

Amenities:

A full fledged club house consisting of Gym, Guest rooms, Recreation room, Banquet hall Dining hall Shuttle court Children play area.

To Pendurthi



60' Road

40' Road