



Saldanha

Garden - II

Bicholim, Goa



Welcome to the Saldanha Garden

This exclusive Garden - is nestled in the midst of greenery in the calm and peaceful location on the Mapusa- Bicholim main road. The Garden complex offers few commercial units, which will benefit from the main Mapusa -Bicholim road. The residential units are located amidst green surrounding with schools and main Bicholim city just a kilometer away. The Garden residences are perfect blend of a home within tranquil natural environs

Our core belief is respecting the environment with our teams of architect and engineers sharing these beliefs. In Saldanha Garden we will create fine green residential projects using the best of material. We take pride in providing this truly valuable real estate to be your next home and we make it part of our commitment to provide sustainable real estate, balancing this development with environment care and social responsibility.



Features

- Conveniently located on main road connecting Bicholim & Mapusa.
- Designated car parking spot for two bedroom apartment.
- Vitrified flooring for all room, with Anti skid tiles for bathroom, with hot and cold water arrangements.
- French windows for living room, giving a better feel of the outdoor.
- Kitchen platform with Granite top & Stainless Steel Sink.
- Main door with Teakwood and brass fixtures, other doors with teakwood frame and marine ply panels.

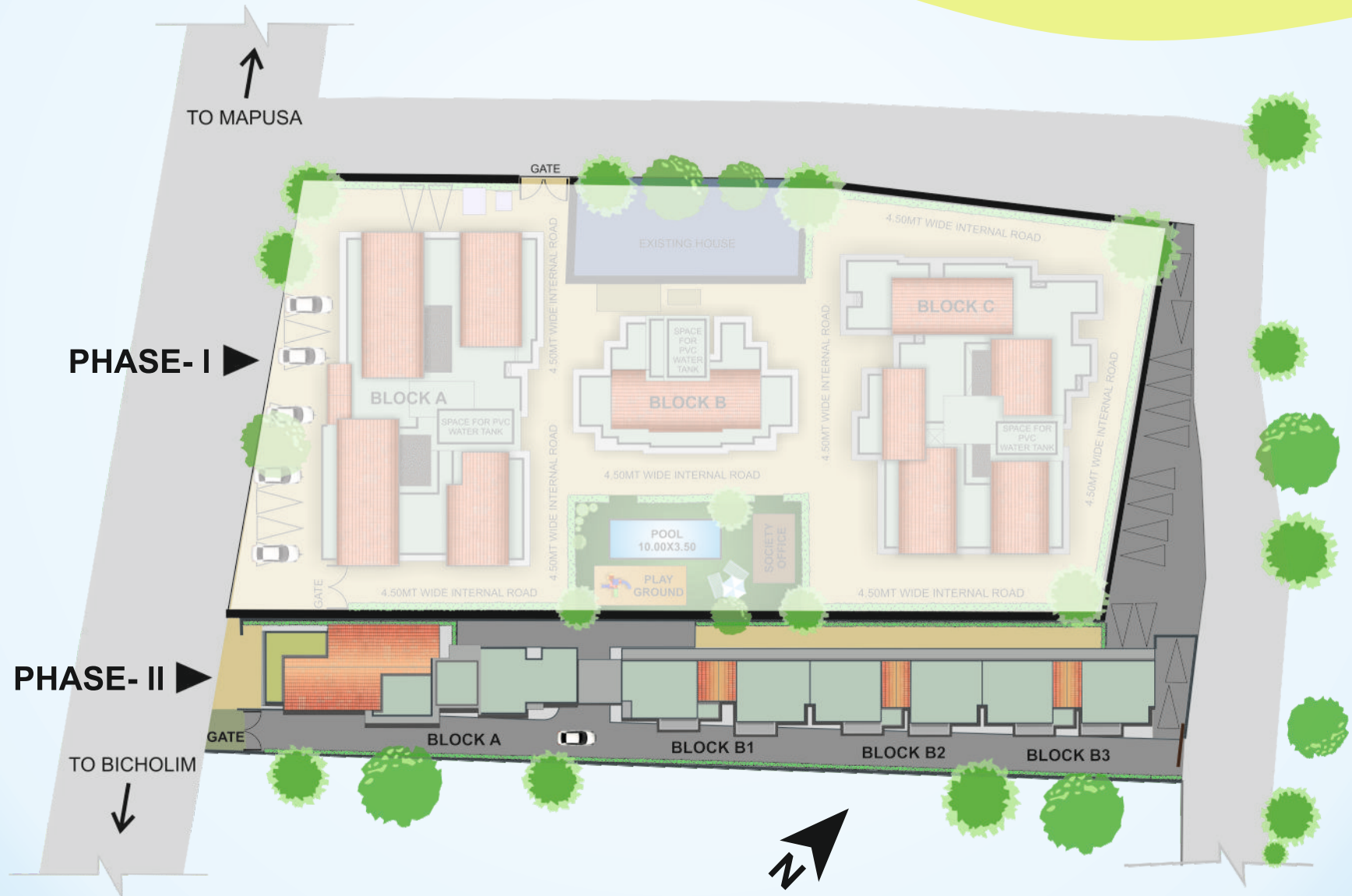
Highlights

Swimming Pool
Children's Play Area
Covered Parking

- Internal road with Interlocking pavers & landscape gardens.
- Provision for Inverter connection for power back up.
- Plumbing provision for Individual Solar water heater for each apartment to ensure continues hot & cold water in all taps.
- Provision for Satellite Dish.

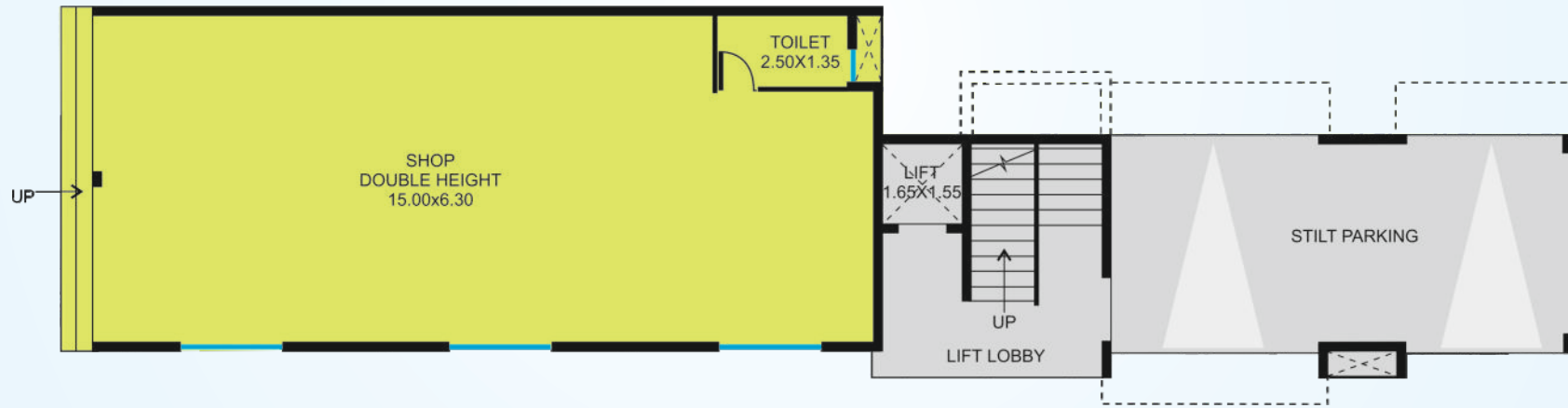


SITE PLAN



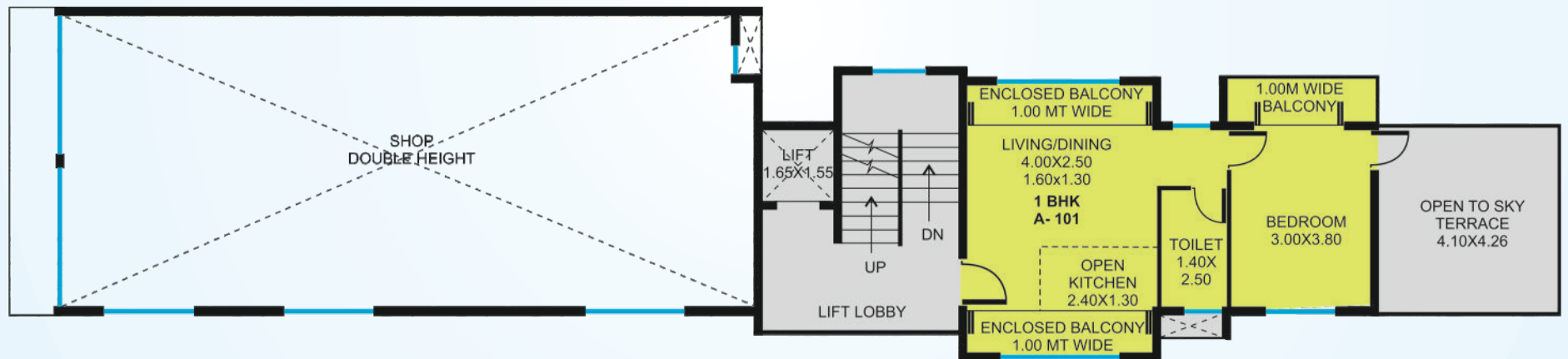
BLOCK - A, GROUND / STILT FLOOR PLAN

Shop No.	Area sq.mt.	Type
01	103.78	SHOP (DH)



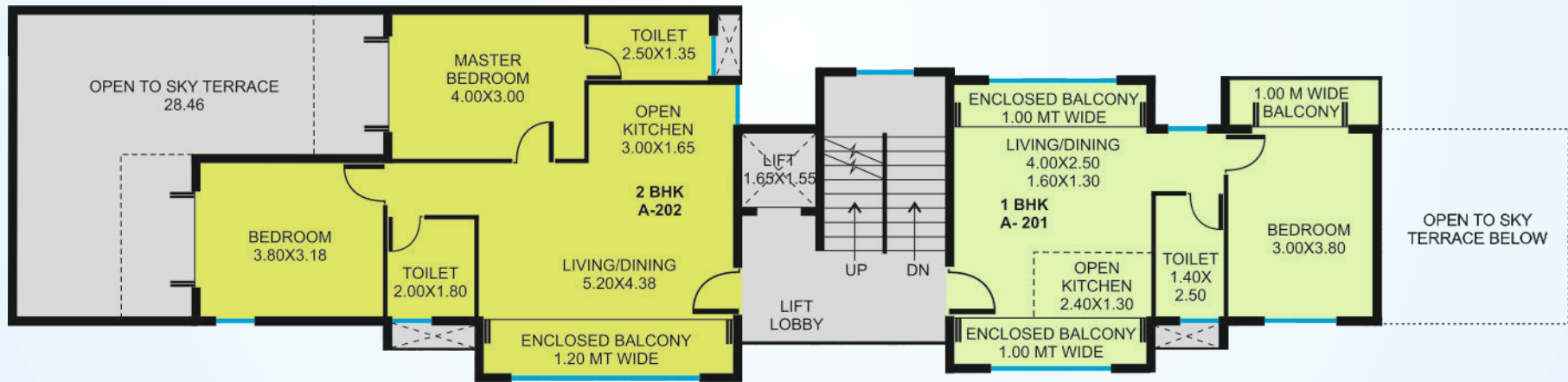
BLOCK - A, FIRST FLOOR PLAN

Flat No	Area sq.mt.	Type	Open Terrace
A-101	66.30	1BHK	17.34



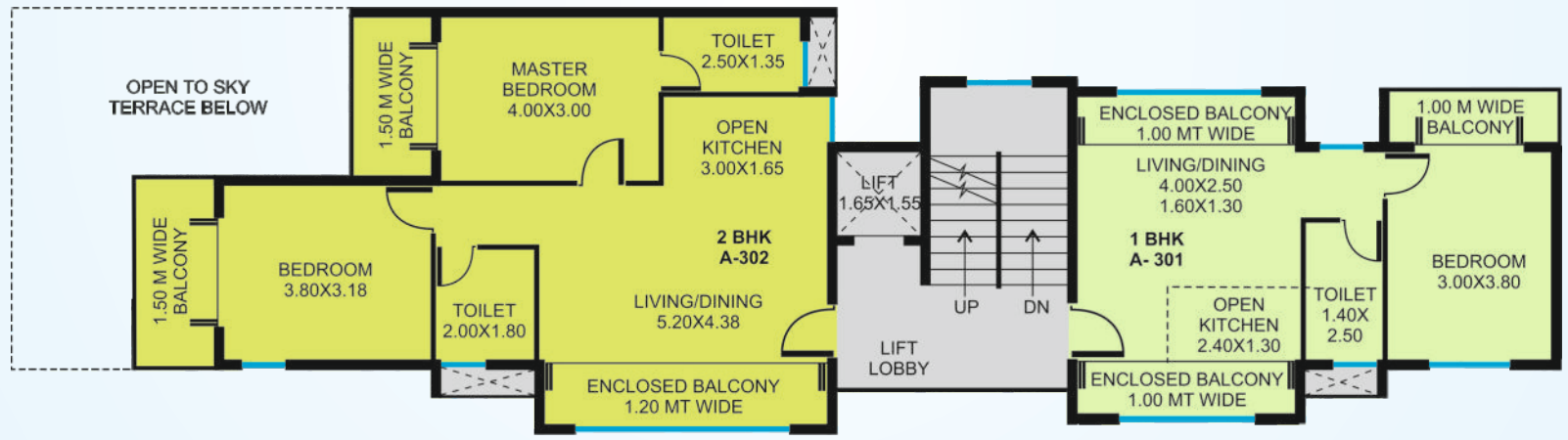
BLOCK - A, SECOND FLOOR PLAN

Flat No	Area sq.mt.	Type	Open Terrace
B-201	66.30	1BHK	
B-202	105.47	2BHK	28.46



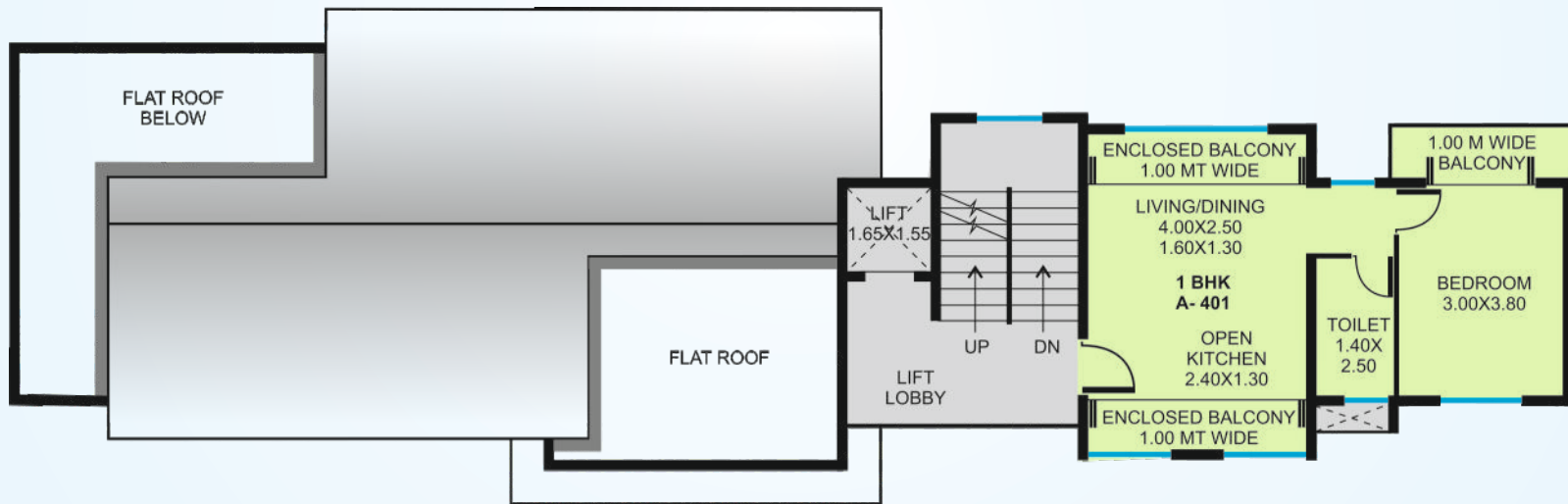
BLOCK - A, THIRD FLOOR PLAN

Flat No	Area sq.mt.	Type
B-301	66.30	1BHK
B-302	105.47	2BHK

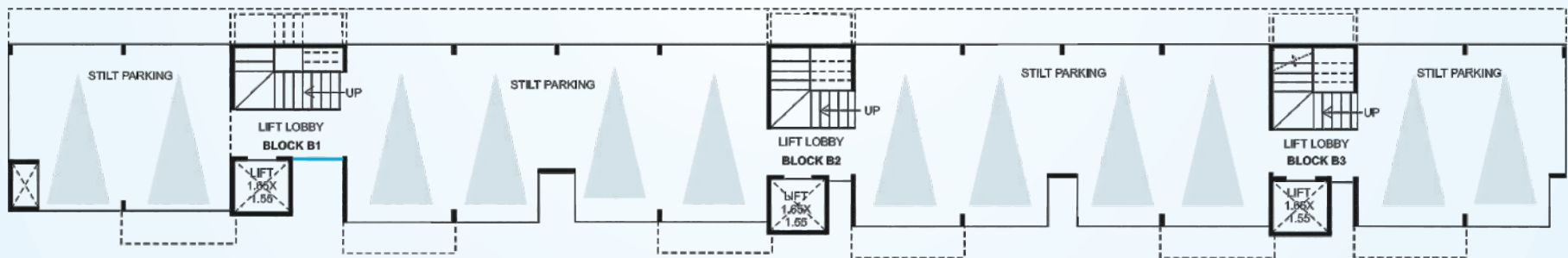


BLOCK - A, FOURTH FLOOR PLAN

Flat No	Area sq.mt.	Type
A-401	66.30	1BHK



BLOCK B, STILT FLOOR PLAN



BLOCK B1
FIRST, SECOND, THIRD & FOURTH FLOOR PLAN

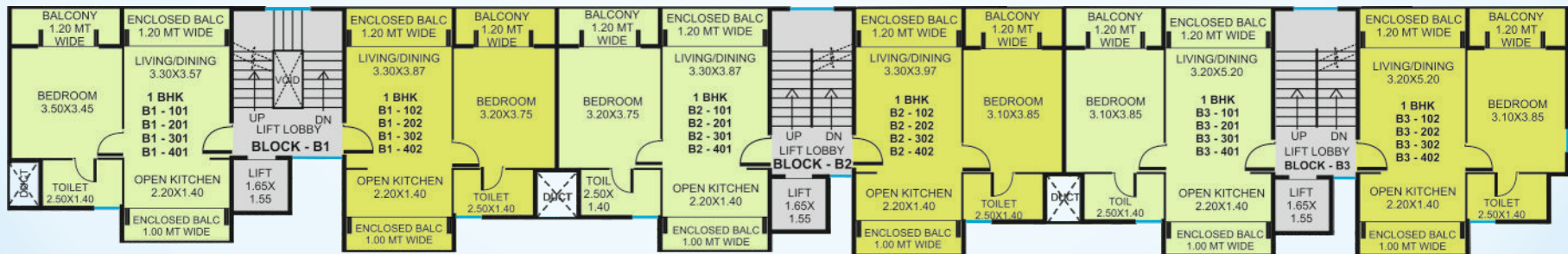
Flat No	Area sq.mt.	Type
B1-101/201/301/401	61.58	1BHK
B1-102/202/302/402	61.54	1BHK

BLOCK B2
FIRST, SECOND, THIRD & FOURTH FLOOR PLAN

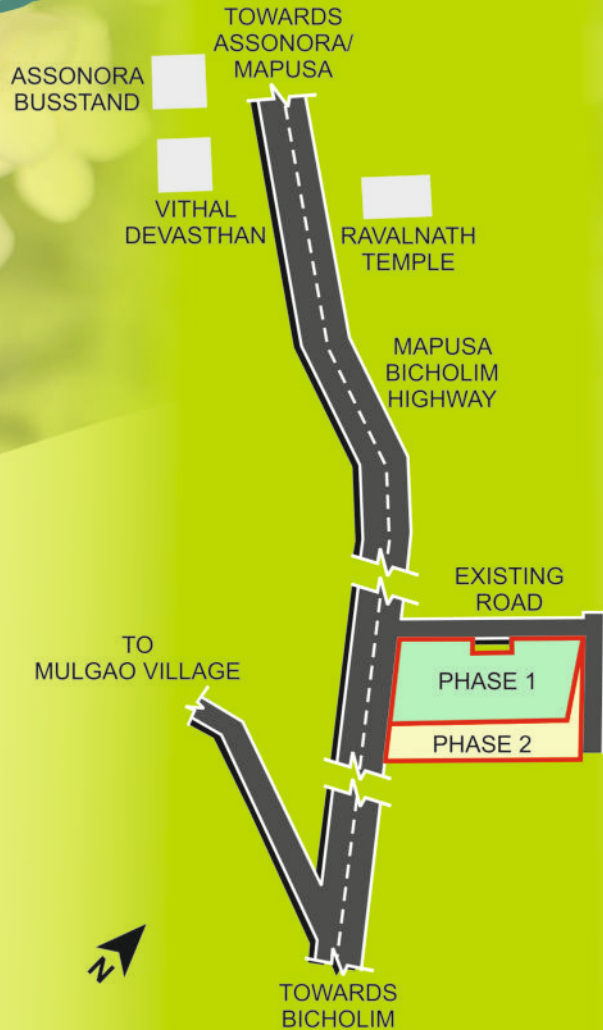
Flat No	Area sq.mt.	Type
B2-101/201/301/401	60.64	1BHK
B2-102/202/302/402	60.80	1BHK

BLOCK B3
FIRST, SECOND, THIRD & FOURTH FLOOR PLAN

Flat No	Area sq.mt.	Type
B3-101/201/301/401	60.73	1BHK
B3-102/202/302/402	61.47	1BHK



Saldanha Garden Location



Some of Our Completed Projects



Ongoing Projects



Saldanha Developers Pvt Ltd

Head Office:

302, Mathias Plaza, 18th June Road, Panaji - 403 001, Goa, India
 Tel: (0832) 2224485, 2220568 / 69
 Mob: (91) 8888816923
 E-mail : sales@saldanhagroup.com

5/6, Pawan Palace, Sitladevi Temple Road, Mahim - 400 016, Mumbai
 Tel : (022) 24314300 / 301
 E-mail : mumbai.office@saldanhagroup.com

Web Site : www.saldanhagroup.com

RERA Reg. No: PRGO07211368

This is not a legal offering and all plans and visuals are an artists impression and subject to revision.