



BUILDERS & DEVELOPERS (P) LTD
PRESENTS

Kalp City

AN INTEGRATED TOWNSHIP



Live In Style

The Grandeur of the Township dawns upon you as soon as you arrive at the gates of the "Kalp City" Township. A positive and joyous energy emanating from the water cascades and the foliage art of the Gates will send you by its charm in a right mood every time you arrive home. The shall have its wide roads, jogging track and paved walkways amidst extensive greenery all around.

A special mention at the amenities which matches your lifestyle, is imminent here. With the advent of the township "Kalp City" itself the club house and the well equipped health club with swimming pool, gymnasium, aerobics, meditation kiosk will become operational for the residents along with playgrounds for kids.

For a comfortable living a shopping Plaza near the residential area provides space for convenience stores and shops within the township for the day-to-day needs of the residents.





Kalp City



© All rights reserved. (Page 100) (Project: KALP CITY) (Date: 20/10/2014)





Kasp City

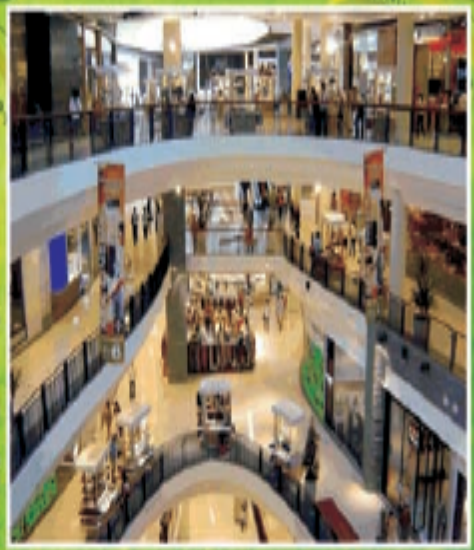


1 2 3 4 5 6 7 8 9 10 11 12 13 14 15 16 17 18 19 20 21 22 23 24 25 26 27 28 29 30 31 32 33 34 35 36 37 38 39 40 41 42 43 44 45 46 47 48 49 50 51 52 53 54 55 56 57 58 59 60 61 62 63 64 65 66 67 68 69 70 71 72 73 74 75 76 77 78 79 80 81 82 83 84 85 86 87 88 89 90 91 92 93 94 95 96 97 98 99 100





Shopping Complex



Swimming Pool



School



Parks



Kasp City



Kalp City

- Integrated Township of 70 acres approximately.
- Plot Sizes (Sq. Fit) 500, 750, 1000, 1250, 1800, 2400, 3200
- 24 hours security at main gate
- Wide roads
- Extensive greenery
- Distance from Amausi Airport - 4.5 Kms.
- Distance from Bus Stand Alambagh - 10 Kms.
- Distance from Charbagh(Railway Station) - 10.5 Kms.
- 50 Feet/ 30 Feet/ 25 Feet roads.
- Landscaped parks, Paved walkways
- Electricity, Water Sewage, Water Supply, Drainage, Black Top(damur road).
- Safe and Secure KIDS play area.
- Convenience stores / Shopping Area
- Power and Water backup.
- Proposed Metro Connectivity.



Original pictures of the Kalp City Site



Kalp City - Payment Plan

Down Payment Plan

Payment In Percentage

On Booking

20%

Within 30 Days

70%

On Possesion

10%

Flexi Payment Plan

Payment In Percentage

On Booking

40%

Within 3 Months from Booking

6.25%

Within 6 Months from Booking

6.25%

Within 9 Months from Booking

6.25%

Within 12 Months from Booking

6.25%

Within 15 Months from Booking

6.25%

Within 18Months from Booking

6.25%

Within 21 Months from Booking

6.25%

Within 24 Months from Booking

6.25%

On Possesion

10%

Other Charges (PLC)

Park facing PLC (preferential location charges)

10%on BSP

Corner PLC (preferential location charges)

10%on BSP

East Facing PLC (preferential location charges)

10%on BSP

50 Feet road PLC (preferential location charges)

10%on BSP

Other Charges (On Possesion)

EEC (External Electrification Charges)

Rs.50.00 Per Sq Feet

EDC (External Development Charges)

Rs.50.00 Per Sq Feet

Lifetime Club Membership

Rs.50000.00

The installments stages can be called for payment in any sequence depending upon development stage.

OTHER TERM & CONDITIONS

Booking amount cheques will be drawn in favour of M/s "GSR BUILDERS & DEVELOPERS (P) LTD" payable at Lucknow

Price prevailing as on date of Booking and acceptance by the firm shall be final.

Possession of units shall be given as per the allotment terms after receiving of final payment along with other charges & execution of sale deed.

Stamp duty, Registration & other related charges/ cost has to be borne by the Buyer/ Allottee.

Any additional facility that may be provided shall be charged extra.

Service Tax @ 3.09% will be charged on Basic Sale Price as applicable.