



SOBHA

PASSION AT WORK

## A GLIMPSE OF ACTUAL FINISHED APARTMENT

---

3 bedroom + home office  
2343 sq.ft. unit type e

SOBHA  
CITY

Chintels Metropolis, Sector-108  
Gurgaon

Artistic Impression

# THE FLOOR PLAN

TENTATIVE SBA - 217 SQ.MT. (2343.44 SQ.FT.)



## UNIT TYPE 'e'

3 BEDROOMS

MASTER BEDROOM WITH  
WALK-IN CLOSET

LIVING AND DINING

KITCHEN

HOME OFFICE

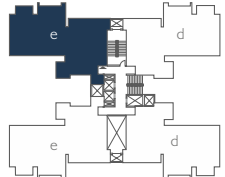
2 BALCONIES

3 TOILETS

POWDER ROOM

UTILITY SPACE

KEY PLAN - TOWER C





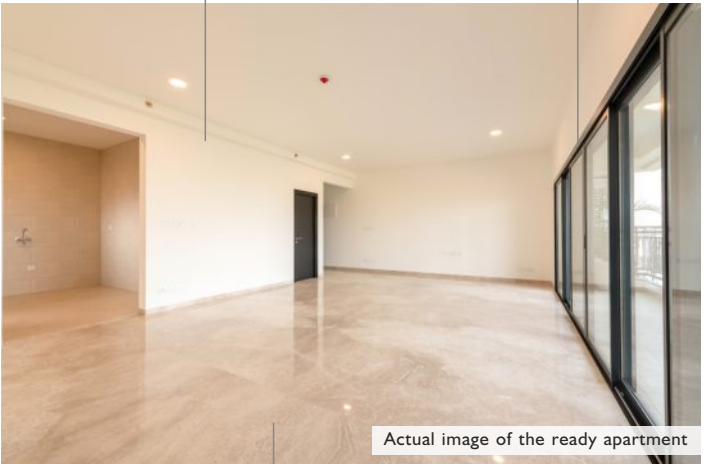
**SOBHA  
CITY**

Chintels Metropolis, Sector-108  
Gurgaon

## SPACIOUS LIVING & DINING AREA

Grand  
24.7" x 16.7"  
living area

Double-glazed  
sliding doors  
& windows



Actual image of the ready apartment

Natural / engineered  
stone flooring &  
skirting



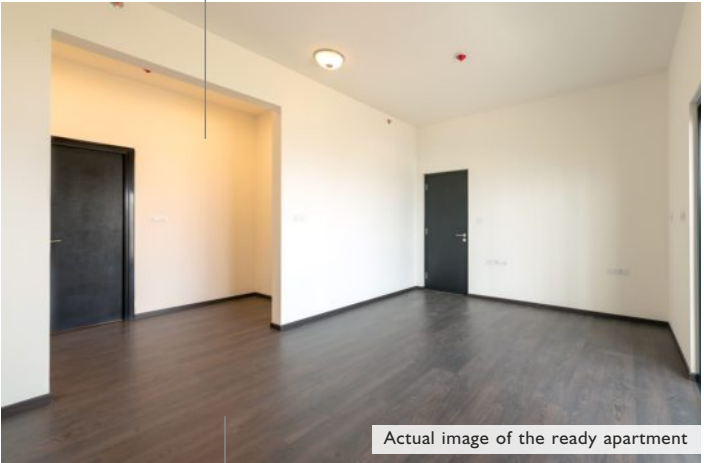


**SOBHA  
CITY**

Chintels Metropolis, Sector-108  
Gurgaon

# LUXURIOUS MASTER BEDROOM

Large walk-in closet of 10.1" x 5.9"



Superior quality timber laminated flooring and skirting





**SOBHA  
CITY**

Chintels Metropolis, Sector-108  
Gurgaon

## BEDROOM 2 WITH MAGNIFICENT VIEW

Large glass facade  
curtain wall for  
exterior views



Superior  
quality vitrified  
tile flooring  
and skirting





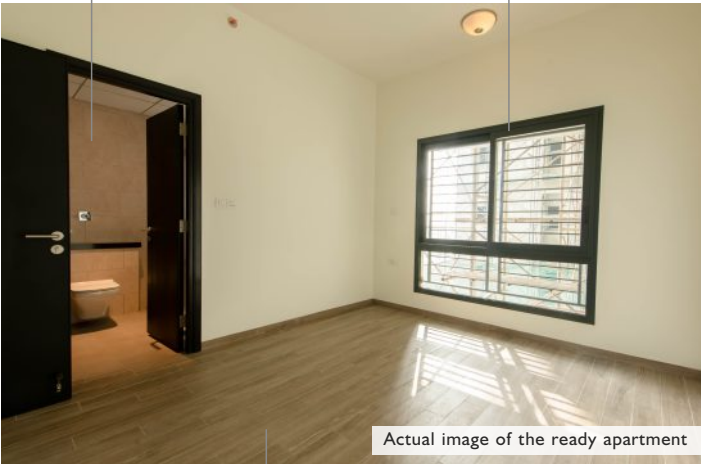
**SOBHA  
CITY**

Chintels Metropolis, Sector-108  
Gurgaon

## WELL-VENTILATED BEDROOM 3

Superior quality anti-skid ceramic tile flooring & walled tile dado in attached bathroom

Large window for better ventilation



Actual image of the ready apartment

Superior quality vitrified tile flooring and skirting





# FUNCTIONAL KITCHEN

Superior quality ceramic tile flooring and ceramic wall tile dado upto ceiling

Designed for convenient working triangle concept



Well-spaced utility to separate wet & dry area





**SOBHA  
CITY**

Chintels Metropolis, Sector-108  
Gurgaon

# SPACIOUS LIVING ROOM BALCONY

Parapet with granite coping / ms railing



Actual image of the ready apartment

Superior quality  
anti-skid ceramic tile  
flooring and skirting







**SOBHA  
CITY**

Chintels Metropolis, Sector-108  
Gurgaon

# WIDE INTERIOR CORRIDOR

Plastic emulsion  
paint



Natural /  
engineered  
stone flooring  
& skirting





**SOBHA  
CITY**

Chintels Metropolis, Sector-108  
Gurgaon

# HOME OFFICE

Separate access from  
outside the apartment  
for enhanced privacy



Actual image of the ready apartment

Vitrified tile  
flooring and  
skirting





**SOBHA  
CITY**

Chintels Metropolis, Sector-108  
Gurgaon

# EXPLORE YOUR HOME VIRTUALLY

---



Click on the picture for the Virtual Tour



## MASTERSTROKE OF A MASTER PLAN



[CLICK HERE TO ENLARGE THE MASTER PLAN](#)

- |                                    |                     |
|------------------------------------|---------------------|
| 1. 32M WIDE GRAND ENTRANCE PLAZA   | 10. OUTDOOR GYM     |
| 2. 90M DIA CRICKET GROUND          | 11. SWIMMING POOL   |
| 3. SKATING RINK                    | 12. ISLAND DECK     |
| 4. FULL BASKETBALL COURT           | 13. PARTY LAWN      |
| 5. VOLLEYBALL COURT                | 14. CAMPING GROUND  |
| 6. CHILDREN'S PLAY AREA            | 15. AMPHITHEATER    |
| 7. CLUB OVAL 1                     | 16. CLUB OVAL 2     |
| 8. 1KM LONG WALKING & BIKING TRAIL | 17. 3 TENNIS COURTS |
| 9. PODIUM GREENS                   |                     |



SOBHA  
CITY

Chintels Metropolis, Sector-108  
Gurgaon

## 3 BEDROOM PREMIUM RESIDENCES - 2343 SQ.FT.

---

### PREMIUM TOWER

---

Four side open towers.  
Three side open residences.

---

Overlooking Resort Style  
Lakelet, Cricket ground or  
Delhi's Reserved Greens

---

2 Covered car parks



**SOBHA  
CITY**

Chintels Metropolis, Sector-108  
Gurgaon

## 3 BEDROOM PREMIUM RESIDENCES - 2343 SQ.FT.

---

### **SUPERIOR SPECIFICATIONS**

---

Imported marble flooring  
in the living & dining areas

---

Premium bath fittings

---

Glass partition in the shower  
area of the master bedroom



**SOBHA  
CITY**

Chintels Metropolis, Sector-108  
Gurgaon

## 3 BEDROOM PREMIUM RESIDENCES - 2343 SQ.FT.



### PRIVATE LIVING

- | Apartment entrances do not face each other
- | No common walls between apartments



### FUNCTIONAL HOMES

- | Optimal sized living spaces
- | Thoughtfully designed layouts for ease of movement



**SOBHA  
CITY**

Chintels Metropolis, Sector-108  
Gurgaon

## 3 BEDROOM PREMIUM RESIDENCES - 2343 SQ.FT.



### EFFICIENT AREA

---

- | More carpet area
- | 4 Apartments on each floor



### VENTILATED SPACES

---

- | Large windows & sliding doors
- | Naturally lit atriums





**SOBHA  
CITY**

Chintels Metropolis, Sector-108  
Gurgaon

# AN OVERVIEW OF SOBHA CITY



**39 ACRE OF BIG SCALE DEVELOPMENT,  
ONE OF THE LARGEST IN GURGAON**

**8.5 ACRES OF ABSOLUTE GREEN SPACES**

**16+ SPORTS AND SOCIAL AMENITIES**

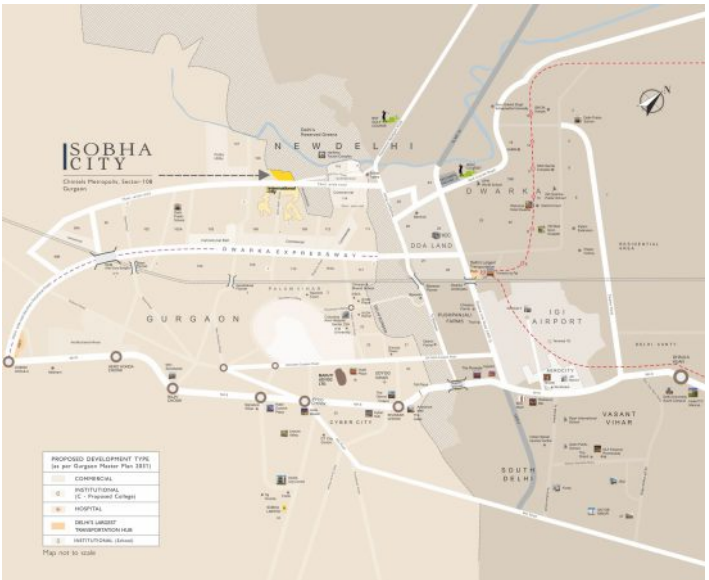
**15 MINS FROM IGI AIRPORT**



**SOBHA  
CITY**

Chintels Metropolis, Sector-108  
Gurgaon

# THE LOCATION MAP



[CLICK HERE TO VIEW THE LOCATION MAP](#)



**THANK YOU**

---

**SOBHA  
CITY**

---

Chintels Metropolis, Sector-108  
Gurgaon