



PASSION AT WORK

A GLIMPSE OF ACTUAL FINISHED APARTMENT

3 bedroom + powder room
2072 sq.ft. unit type d

SOBHA
CITY

Chintels Metropolis, Sector-108
Gurgaon

Artistic impression



THE FLOOR PLAN

TENTATIVE SBA - 192 SQ.MT. (2072.90 SQ.FT.)



UNIT TYPE 'd'

3 BEDROOMS

MASTER BEDROOM WITH
WALK-IN CLOSET

LIVING AND DINING

KITCHEN

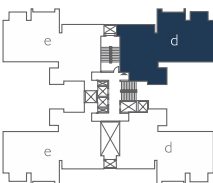
2 BALCONIES

3 TOILETS

POWDER ROOM

UTILITY SPACE

KEY PLAN - TOWER C





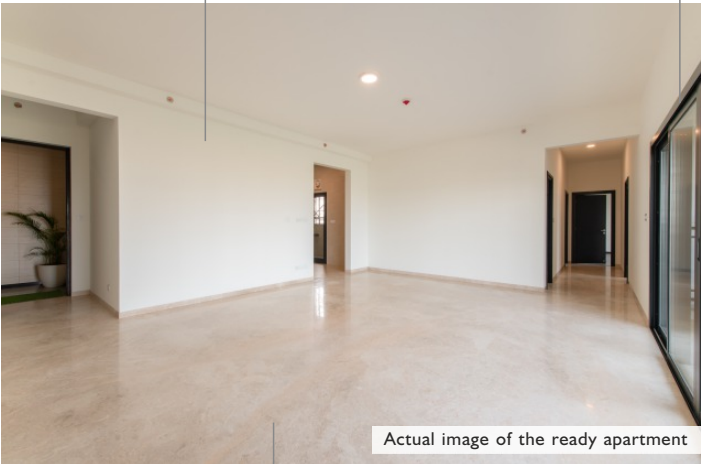
**SOBHA
CITY**

Chintels Metropolis, Sector-108
Gurgaon

SPACIOUS LIVING & DINING AREA

Grand
22.4" x 16.7"
living area

Double-glazed
sliding doors
& windows



Natural / engineered
stone flooring &
skirting





**SOBHA
CITY**

Chintels Metropolis, Sector-108
Gurgaon

LUXURIOUS MASTER BEDROOM

Large walk-
in closet of
10.1" x 5.9"



Actual image of the ready apartment

Superior quality
timber laminated
flooring and
skirting





**SOBHA
CITY**

Chintels Metropolis, Sector-108
Gurgaon

BEDROOM 2 WITH MAGNIFICENT VIEW

Large glass facade
curtain wall for
exterior views



Superior
quality vitrified
tile flooring
and skirting





**SOBHA
CITY**

Chintels Metropolis, Sector-108
Gurgaon

WELL-VENTILATED BEDROOM 3

Large window
for better
ventilation



Actual image of the ready apartment

Superior quality
vitrified tile flooring
and skirting



FUNCTIONAL KITCHEN

Designed for
convenient
working triangle
concept

Superior quality
vitrified tile flooring &
walled tile dado



Well - spaced
utility to
separate dry
& wet area



**SOBHA
CITY**

Chintels Metropolis, Sector-108
Gurgaon

SPACIOUS LIVING ROOM BALCONY

Parapet with granite
coping / ms railing



Actual image of the ready apartment

Superior quality
anti-skid ceramic tile
flooring and skirting



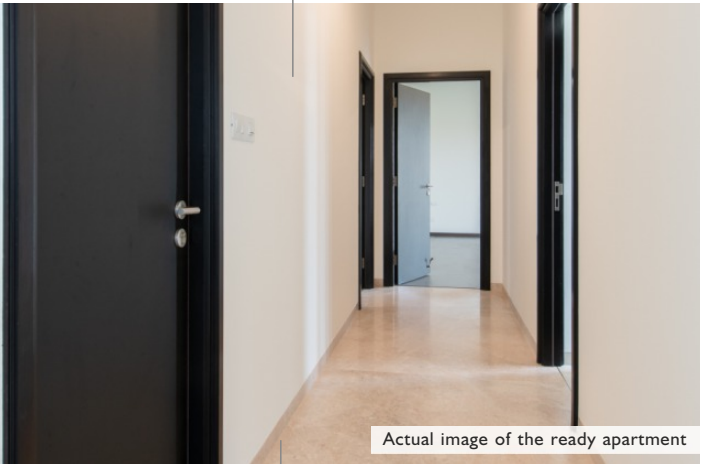


**SOBHA
CITY**

Chintels Metropolis, Sector-108
Gurgaon

WIDE INTERIOR CORRIDOR

Plastic emulsion
paint



Actual image of the ready apartment

Natural /
engineered
stone flooring
& skirting





**SOBHA
CITY**

Chintels Metropolis, Sector-108
Gurgaon

EXPLORE YOUR HOME VIRTUALLY



Click on the picture for the Virtual Tour



MASTERSTROKE OF A MASTER PLAN



[CLICK HERE TO ENLARGE THE MASTER PLAN](#)

- | | |
|------------------------------------|---------------------|
| 1. 32M WIDE GRAND ENTRANCE PLAZA | 10. OUTDOOR GYM |
| 2. 90M DIA CRICKET GROUND | 11. SWIMMING POOL |
| 3. SKATING RINK | 12. ISLAND DECK |
| 4. FULL BASKETBALL COURT | 13. PARTY LAWN |
| 5. VOLLEYBALL COURT | 14. CAMPING GROUND |
| 6. CHILDREN'S PLAY AREA | 15. AMPHITHEATER |
| 7. CLUB OVAL 1 | 16. CLUB OVAL 2 |
| 8. 1KM LONG WALKING & BIKING TRAIL | 17. 3 TENNIS COURTS |
| 9. PODIUM GREENS | |



**SOBHA
CITY**

Chintels Metropolis, Sector-108
Gurgaon

3 BEDROOM PREMIUM RESIDENCES - 2072 SQ.FT.

PREMIUM TOWER

Four side open towers.
Three side open residences.

Overlooking Resort Style
Lakelet, Cricket ground or
Delhi's Reserved Greens

2 Covered car parks



**SOBHA
CITY**

Chintels Metropolis, Sector-108
Gurgaon

3 BEDROOM PREMIUM RESIDENCES - 2072 SQ.FT.

SUPERIOR SPECIFICATIONS

Imported marble flooring
in the living & dining areas

Premium bath fittings

Glass partition in the shower
area of the master bedroom



**SOBHA
CITY**

Chintels Metropolis, Sector-108
Gurgaon

3 BEDROOM PREMIUM RESIDENCES - 2072 SQ.FT.



PRIVATE LIVING

- | Apartment entrances do not face each other
- | No common walls between apartments



FUNCTIONAL HOMES

- | Optimal sized living spaces
- | Thoughtfully designed layouts for ease of movement



**SOBHA
CITY**

Chintels Metropolis, Sector-108
Gurgaon

3 BEDROOM PREMIUM RESIDENCES - 2072 SQ.FT.



EFFICIENT AREA

- | More carpet area
- | 4 Apartments on each floor



VENTILATED SPACES

- | Large windows & sliding doors
- | Naturally lit atriums



**SOBHA
CITY**

Chintels Metropolis, Sector-108
Gurgaon

AN OVERVIEW OF SOBHA CITY



**39 ACRE OF BIG SCALE DEVELOPMENT,
ONE OF THE LARGEST IN GURGAON**

8.5 ACRES OF ABSOLUTE GREEN SPACES

16+ SPORTS AND SOCIAL AMENITIES

15 MINS FROM IGI AIRPORT



**SOBHA
CITY**

Chintels Metropolis, Sector-108
Gurgaon

THE LOCATION MAP



[CLICK HERE TO VIEW THE LOCATION MAP](#)



THANK YOU



SOBHA CITY

Chintels Metropolis, Sector-108
Gurgaon