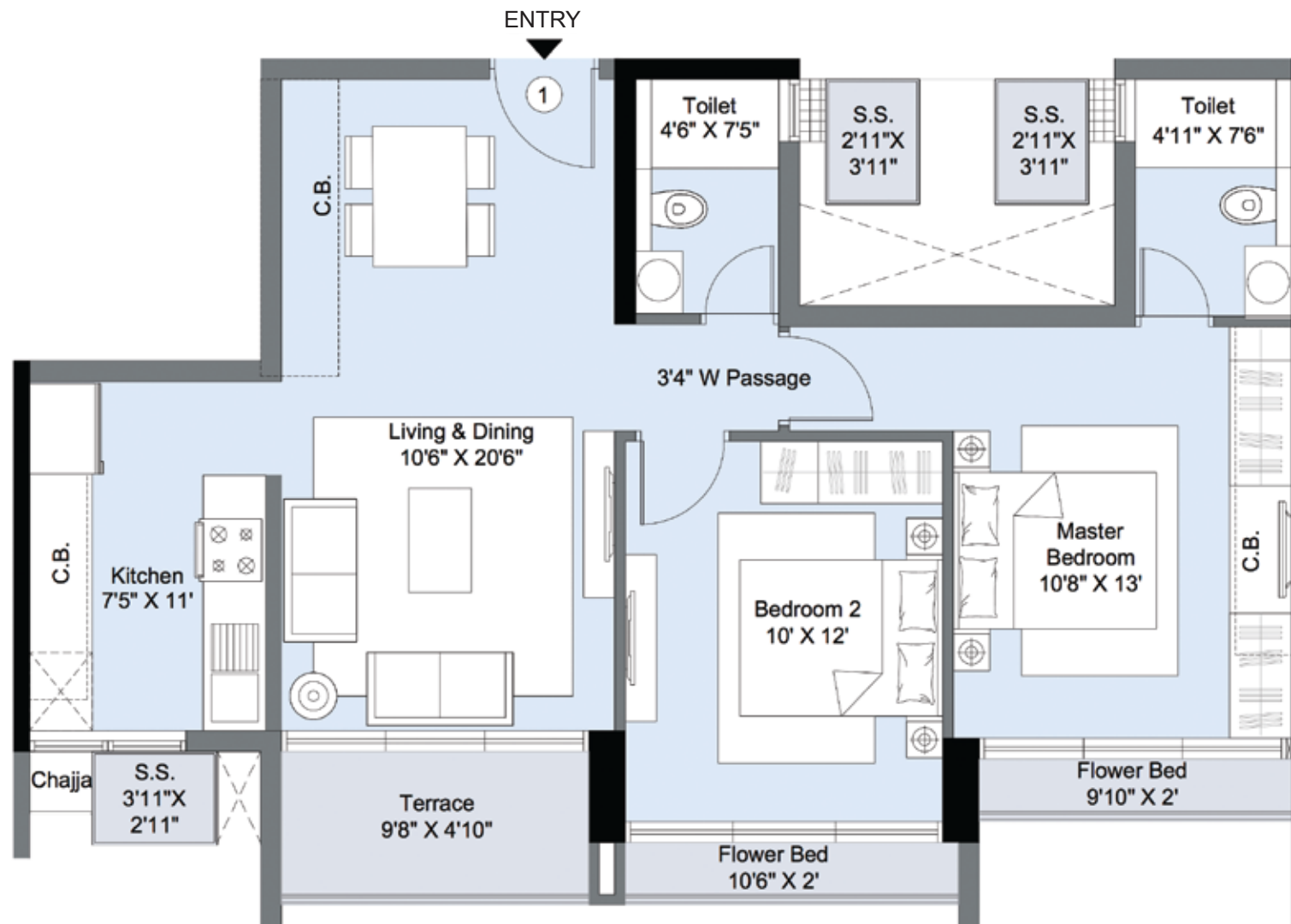


D1 - 4th, 6th, 8th, 10th, 12th & 14th floor
Unit No. 01 (2 BHK - Elegante)

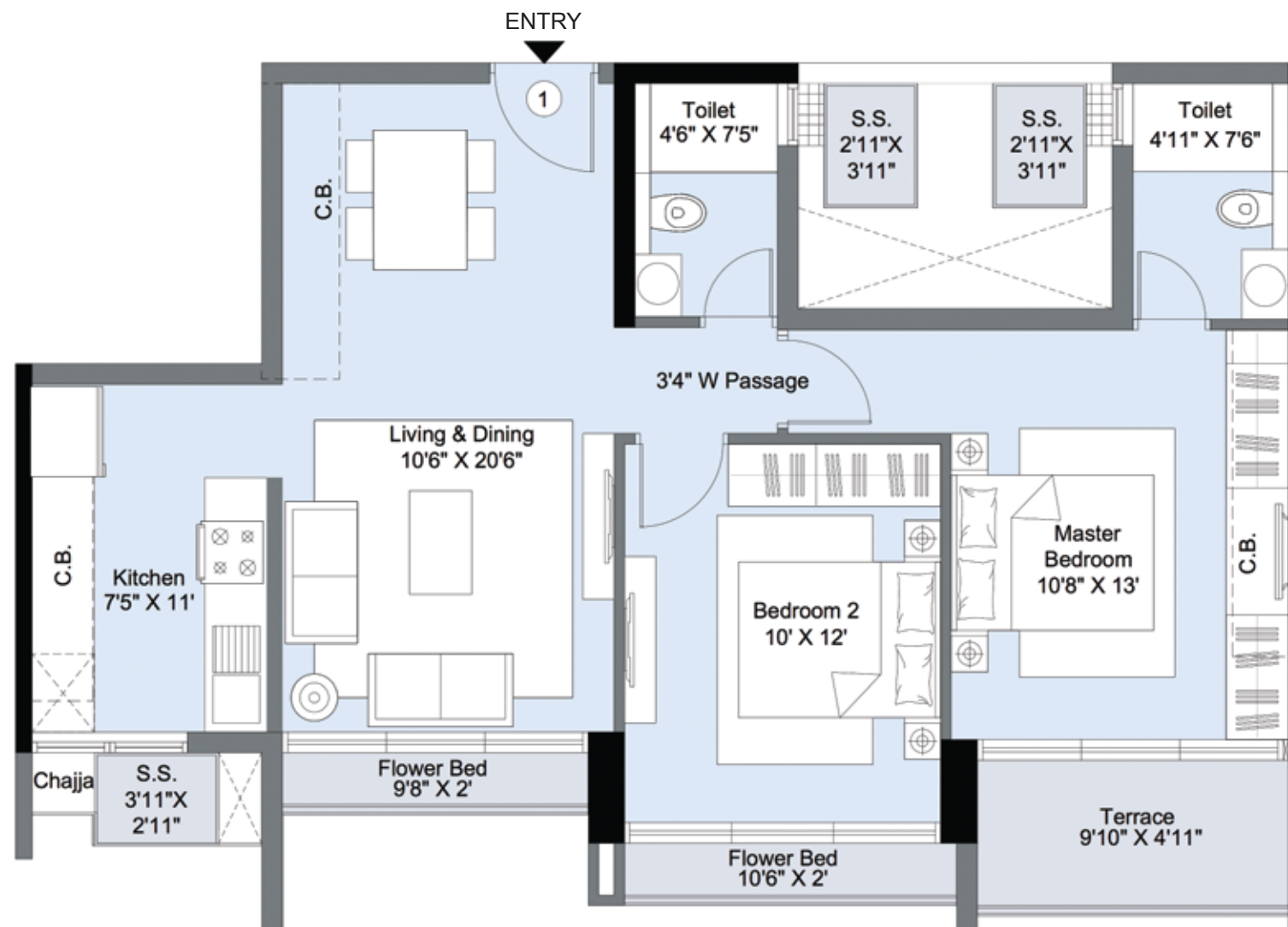


Key Plan

*C.B. = CUPBOARD

MahaRERA registered, details available at: <https://maharera.mahaonline.gov.in>

D1 - 3rd, 5th, 7th, 9th, 11th, 13th & 15th floor
Unit No. 01 (2 BHK - Elegante)

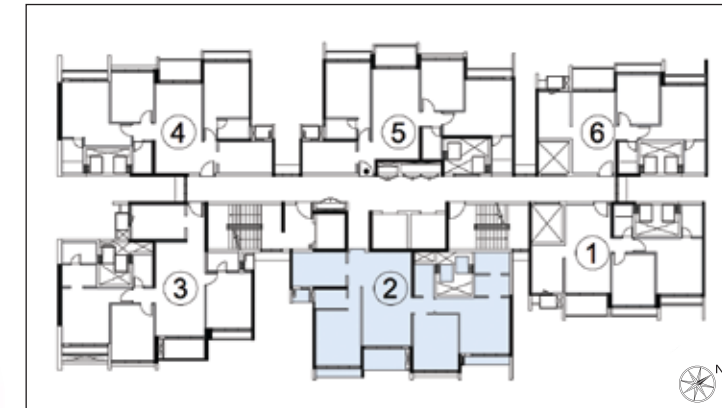
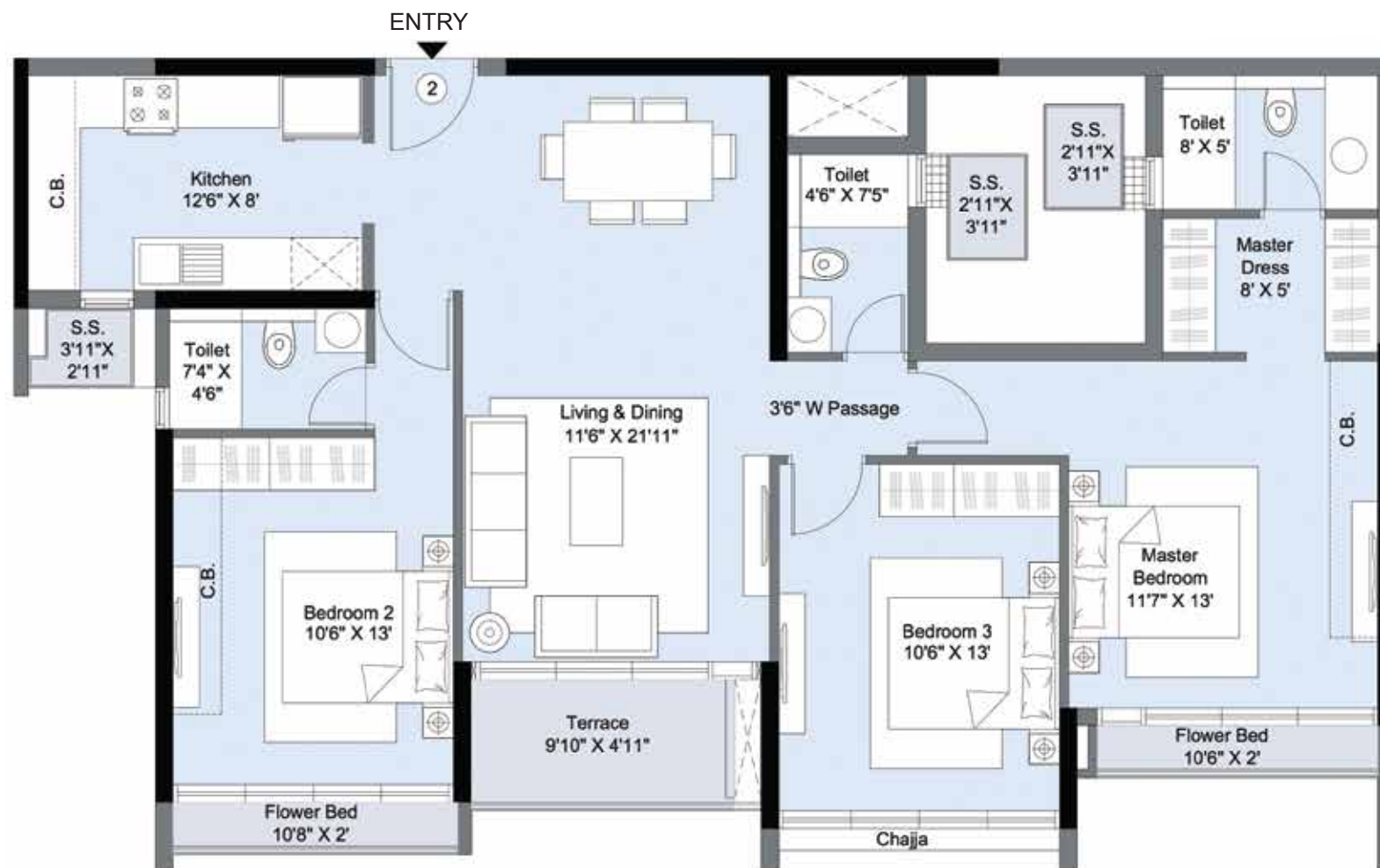


Key Plan

*C.B. = CUPBOARD

MahaRERA registered, details available at: <https://maharera.mahaonline.gov.in>

D1 - 4th, 6th, 8th, 10th, 12th & 14th floor
Unit No. 02 (3 BHK - Supreme 1)

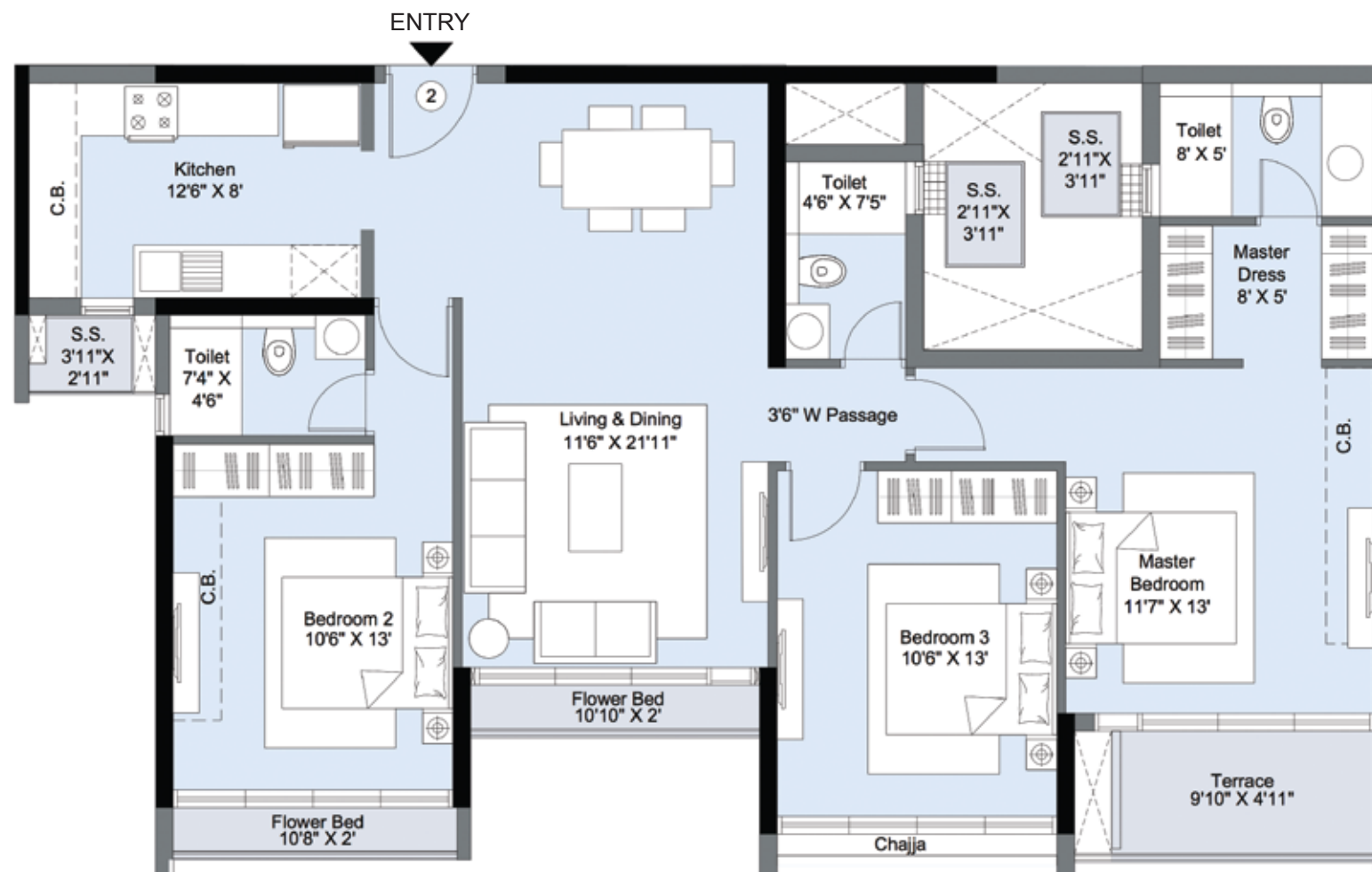


Key Plan

*C.B. = CUPBOARD

MahaRERA registered, details available at: <https://maharera.mahaonline.gov.in>

D1 - 5th, 7th, 9th, 11th, 13th & 15th floor
Unit No. 02 (3 BHK - Supreme 1)

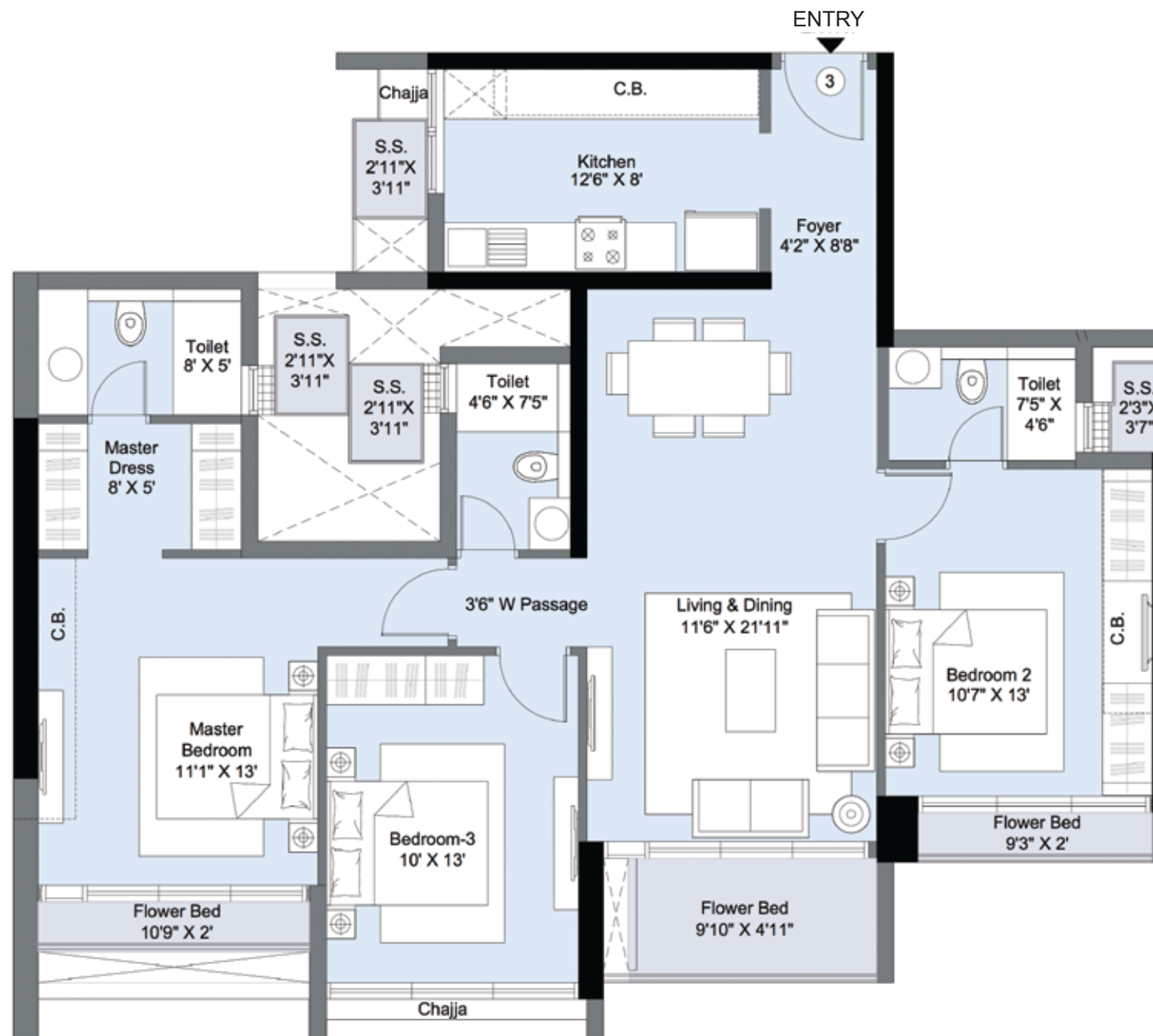


Key Plan

*C.B. = CUPBOARD

MahaRERA registered, details available at: <https://maharera.mahaonline.gov.in>

D1 - 4th, 6th, 8th, 10th, 12th & 14th floor
Unit No. 03 (3 BHK - Supreme 1)



*C.B. = CUPBOARD

MahaRERA registered, details available at: <https://maharera.mahaonline.gov.in>



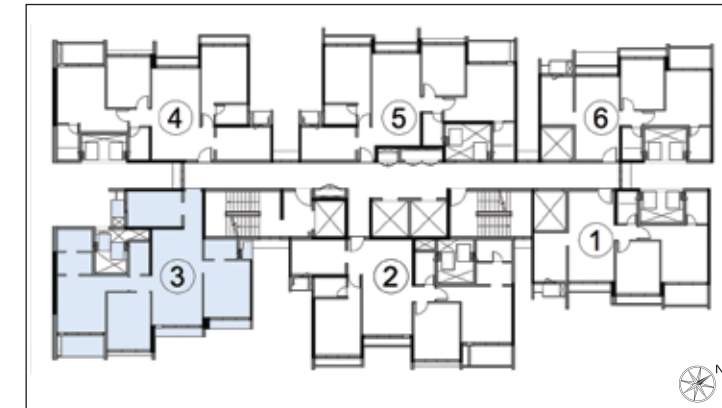
Key Plan

D1 - 5th, 7th, 9th, 11th, 13th & 15th floor
Unit No. 03 (3 BHK - Supreme 1)



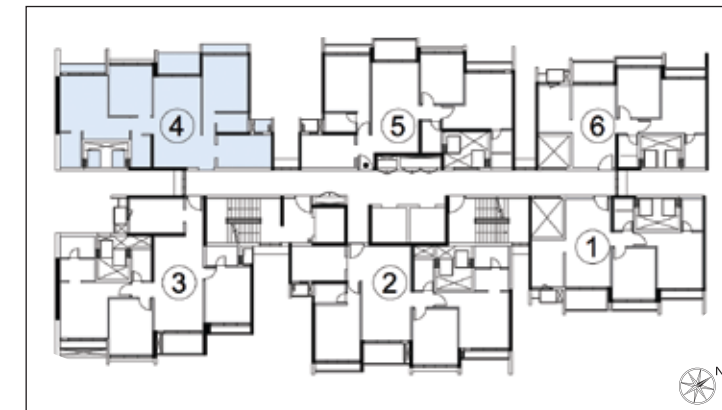
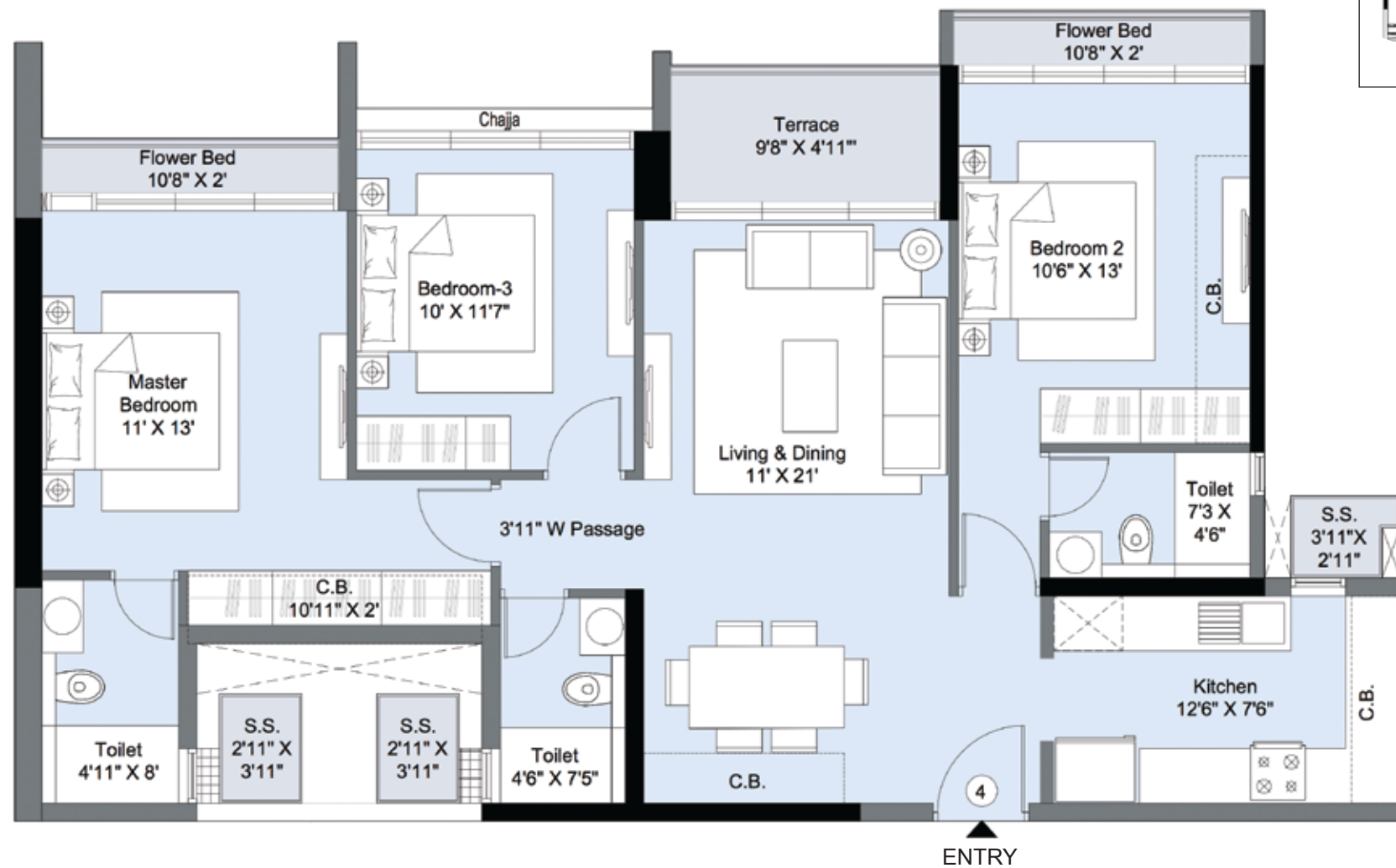
*C.B. = CUPBOARD

MahaRERA registered, details available at: <https://maharera.mahaonline.gov.in>



Key Plan

D1 - 4th, 6th, 10th & 14th floor
Unit No. 04 (3 BHK - Grandio)

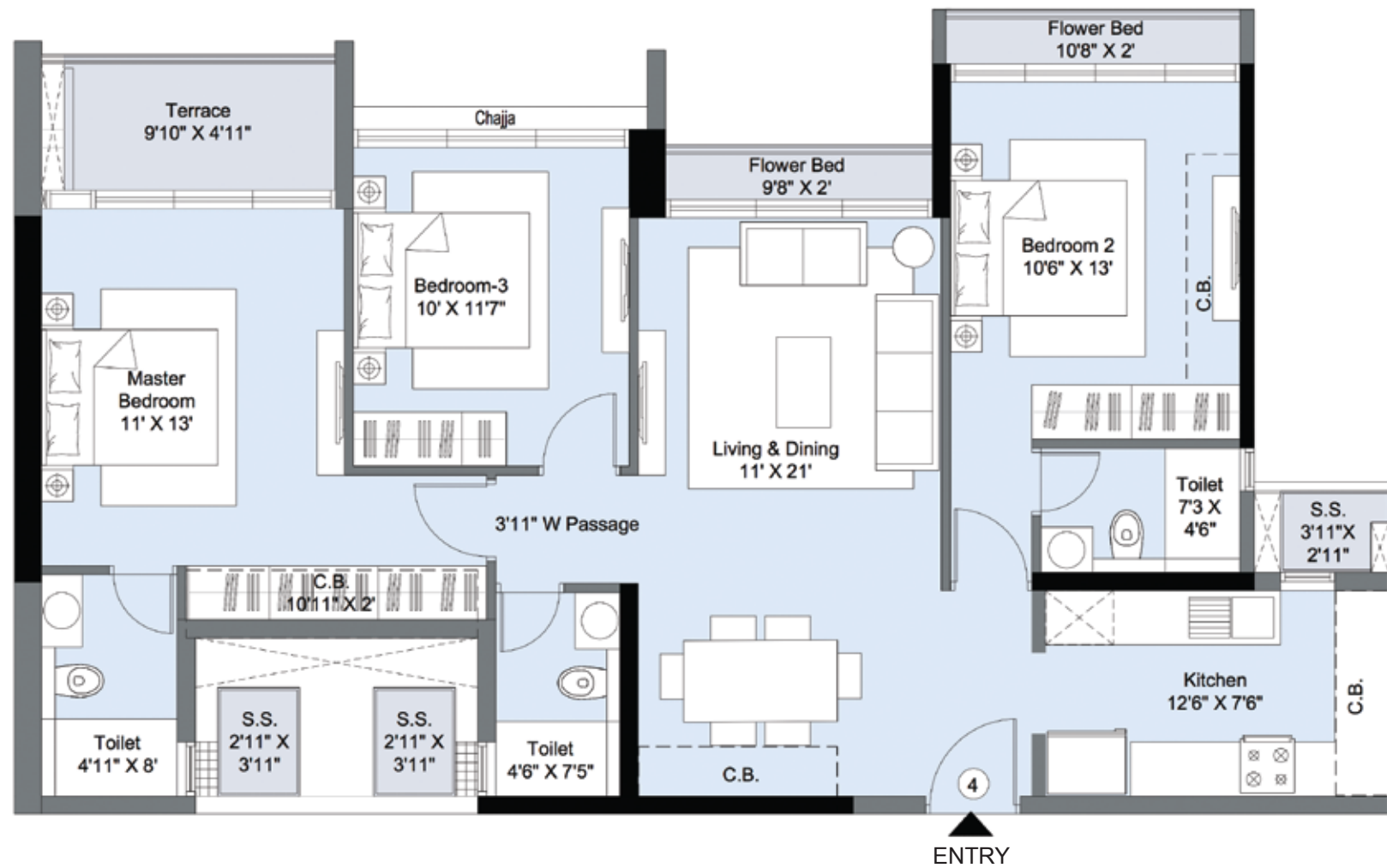


Key Plan

*C.B. = CUPBOARD

MahaRERA registered, details available at: <https://maharera.mahaonline.gov.in>

D1 - 5th, 7th, 9th, 11th, 13th & 15th floor
Unit No. 04 (3 BHK - Grandio)

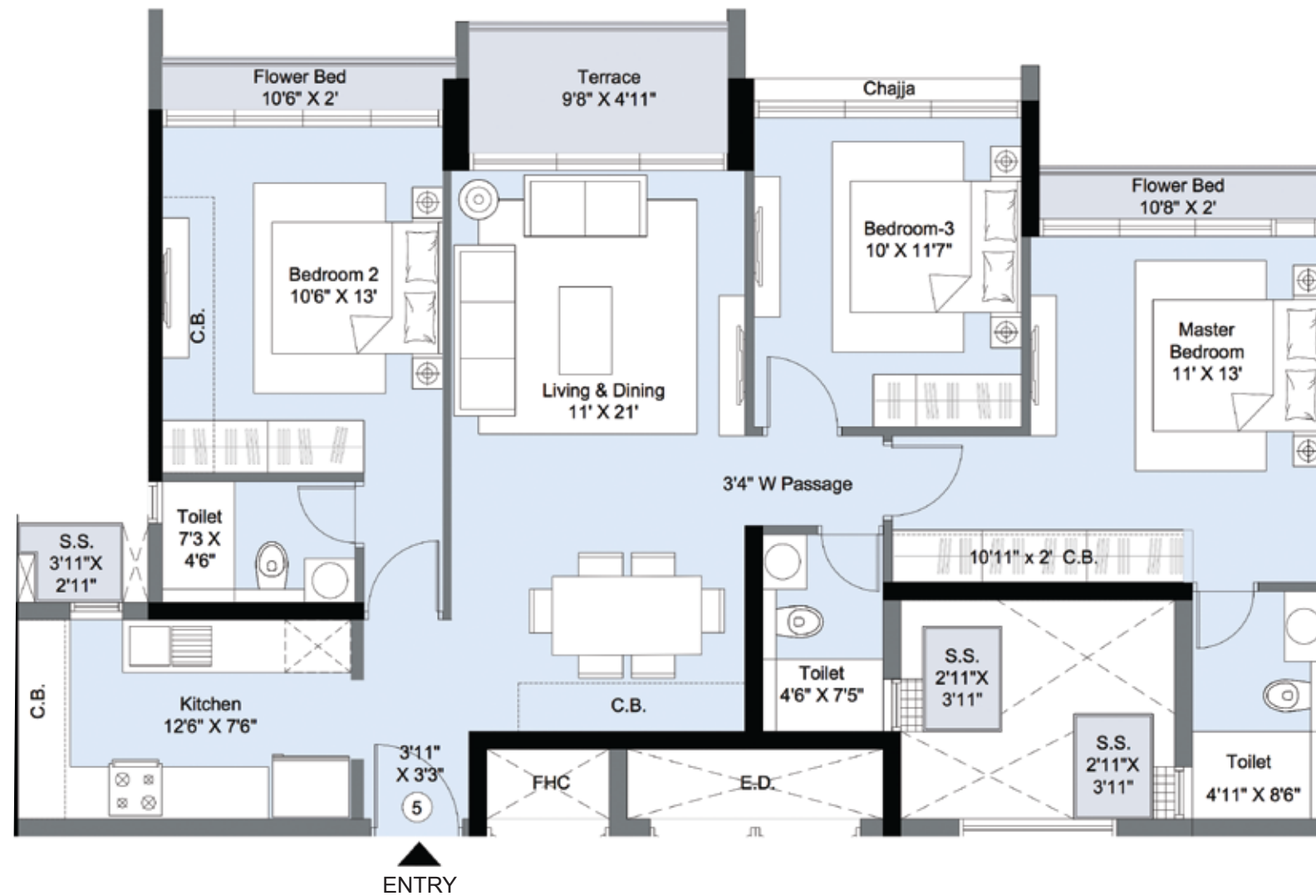


Key Plan

*C.B. = CUPBOARD

MahaRERA registered, details available at: <https://maharera.mahaonline.gov.in>

D1 - 4th, 6th, 8th, 10th, 12th & 14th floor
Unit No. 05 (3 BHK - Grandio)

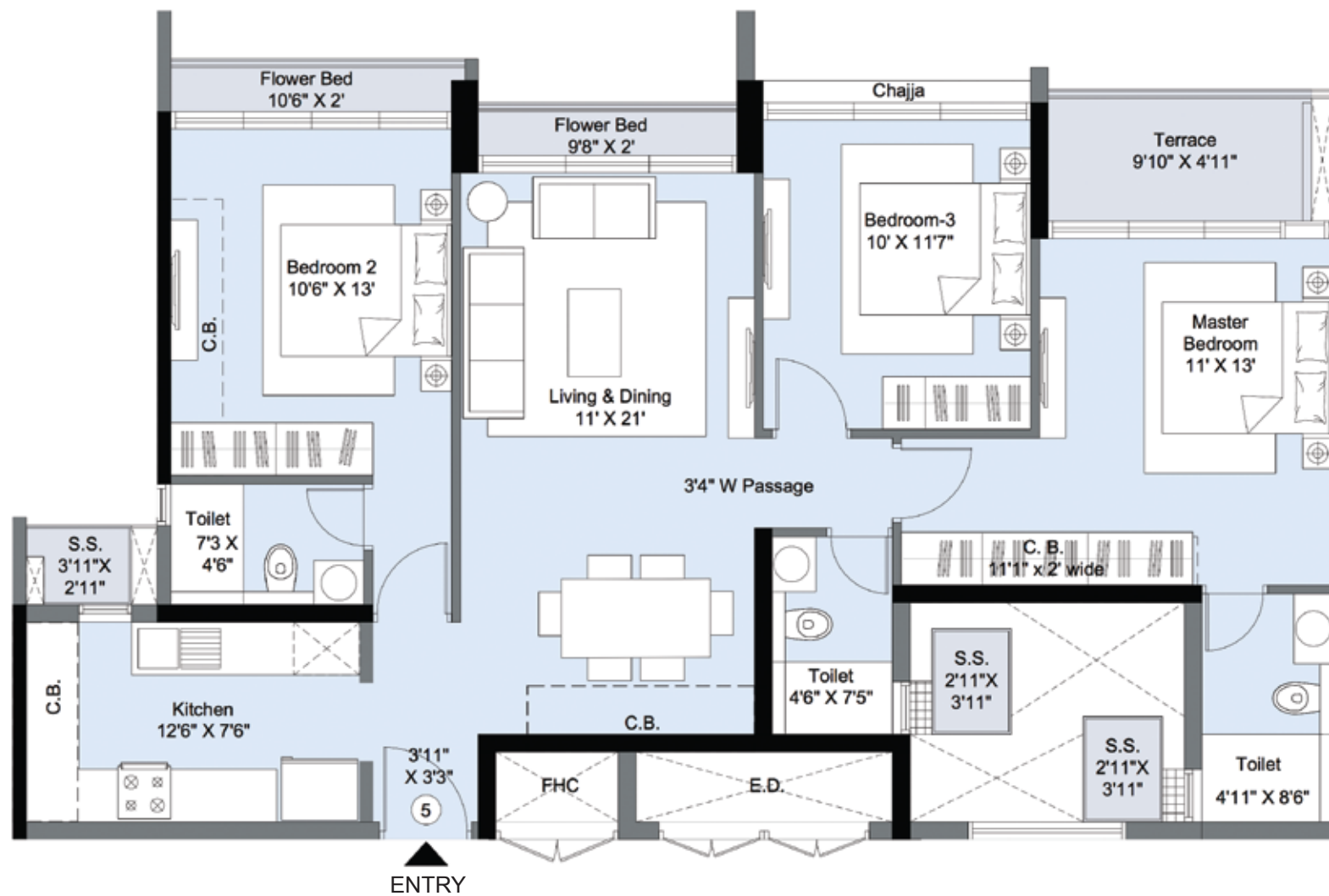


Key Plan

*C.B. = CUPBOARD

MahaRERA registered, details available at: <https://maharera.mahaonline.gov.in>

D1 - 5th, 7th, 9th, 11th, 13th & 15th floor
Unit No. 05 (3 BHK - Grandio)

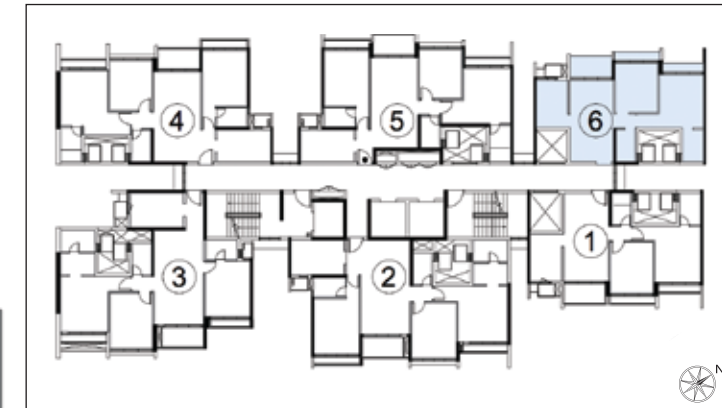
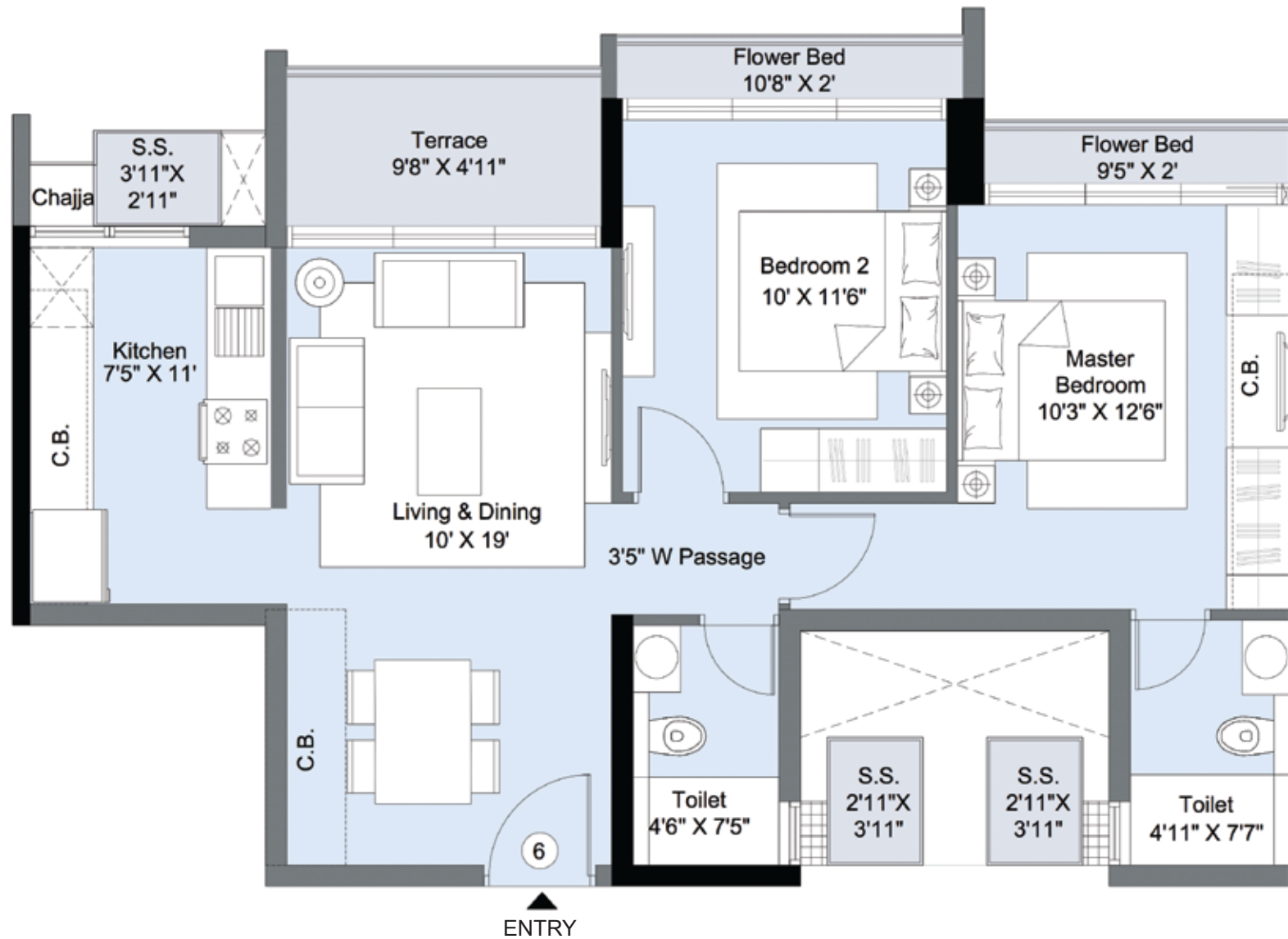


Key Plan

*C.B. = CUPBOARD

MahaRERA registered, details available at: <https://maharera.mahaonline.gov.in>

D1 - 4th, 6th, 8th, 10th, 12th & 14th floor
Unit No. 06 (2 BHK - Elite)

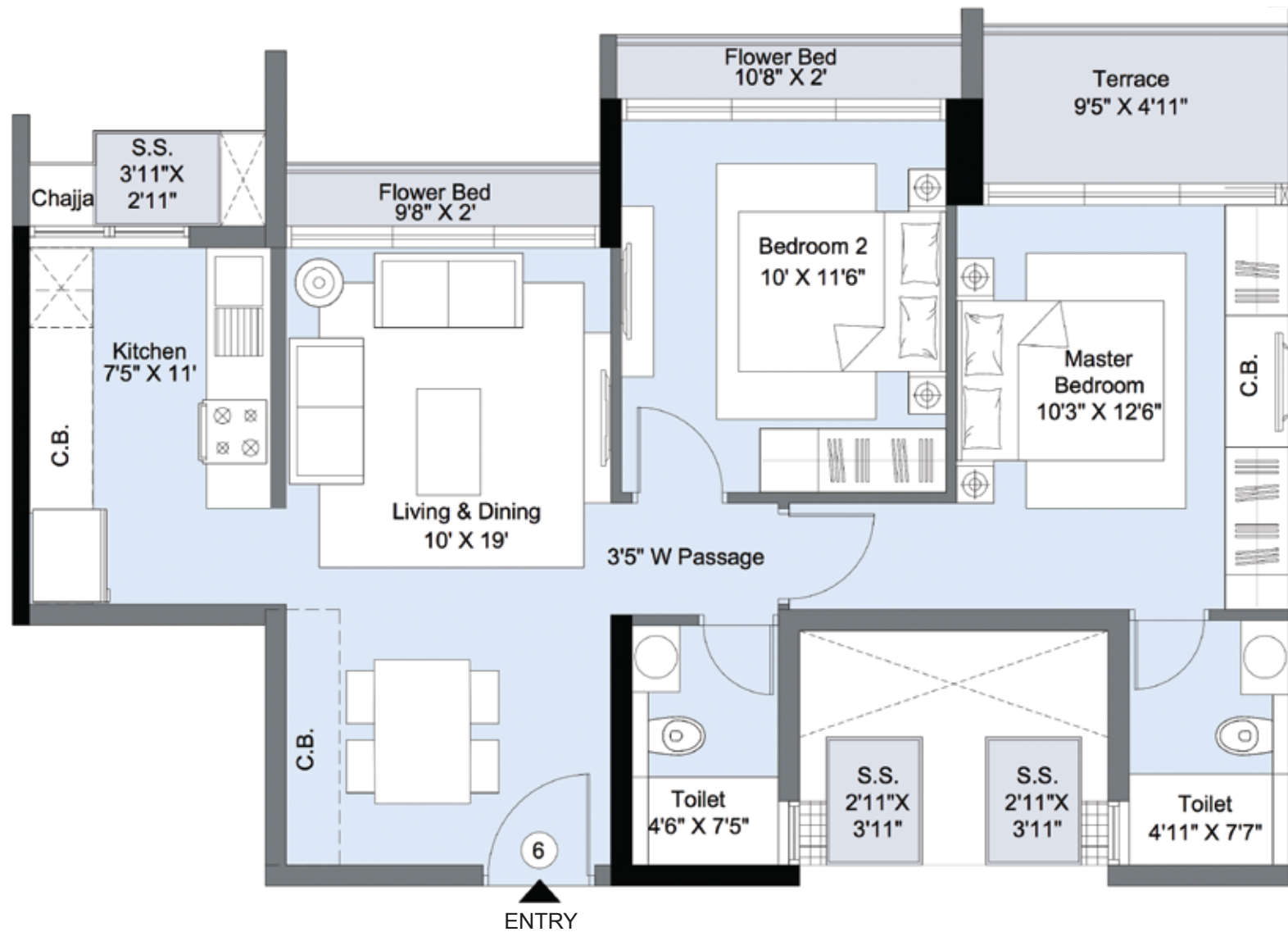


Key Plan

*C.B. = CUPBOARD

MahaRERA registered, details available at: <https://maharera.mahaonline.gov.in>

D1 - 3rd, 5th, 7th, 9th, 11th, 13th & 15th floor
Unit No. 06 (2 BHK - Elite)



Key Plan

*C.B. = CUPBOARD

MahaRERA registered, details available at: <https://maharera.mahaonline.gov.in>

D1 - Typical Floor Plan - 4th, 6th, 10th & 14th floor



*C.B. = CUPBOARD

MahaRERA registered, details available at: <https://maharera.mahaonline.gov.in>

D1 - Typical Floor Plan - 5th, 7th, 9th, 11th, 13th & 15th floor



*C.B. = CUPBOARD

MahaRERA registered, details available at: <https://maharera.mahaonline.gov.in>

D1 - Typical Floor Plan - 8th & 12th floor



*C.B. = CUPBOARD

MahaRERA registered, details available at: <https://maharera.mahaonline.gov.in>