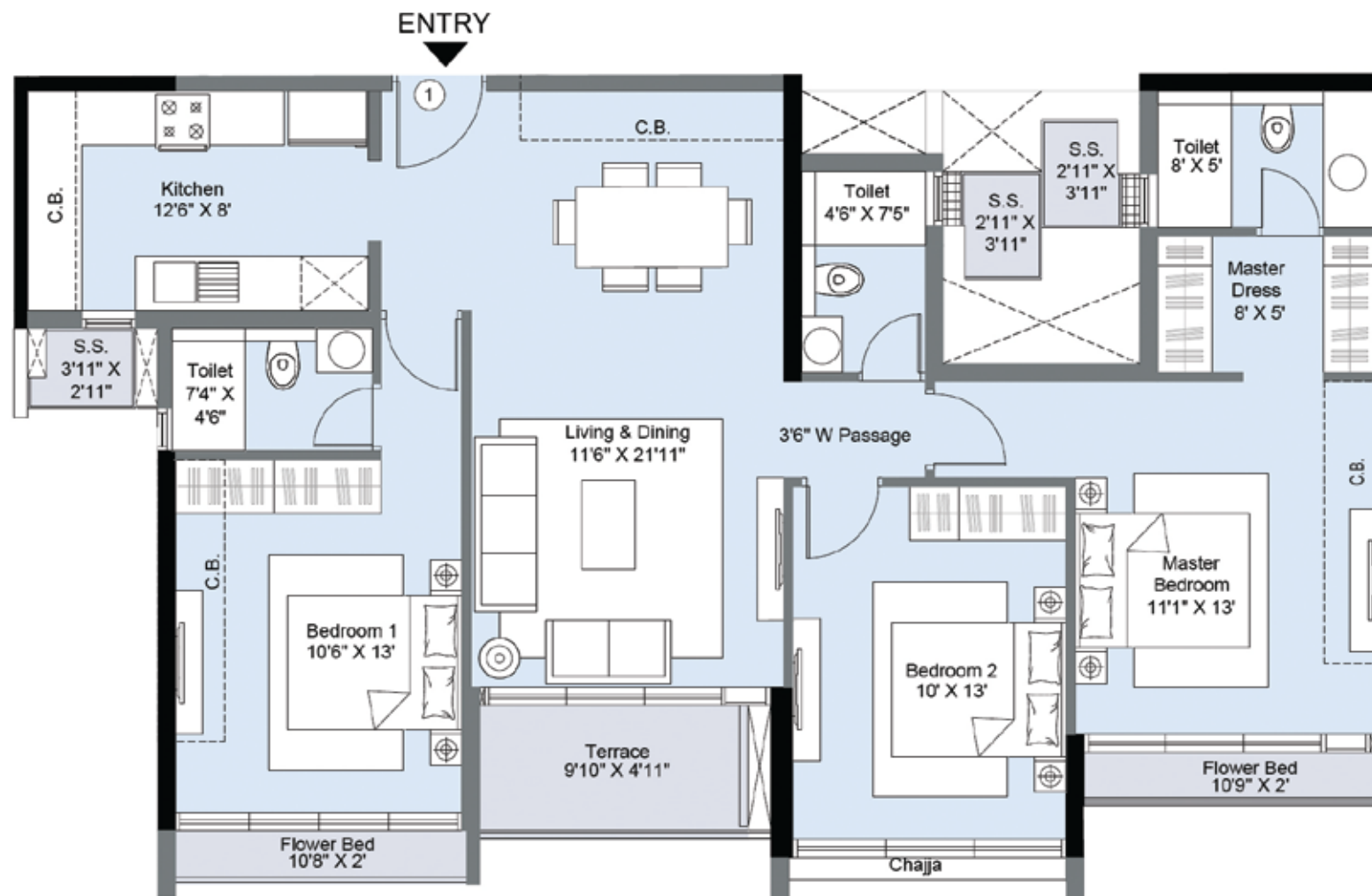


**D2 - 4<sup>th</sup>, 6<sup>th</sup>, 8<sup>th</sup>, 10<sup>th</sup>, 12<sup>th</sup> & 14<sup>th</sup> floor**  
**Unit No. 01 & 06 (3 BHK - Supreme 1)**



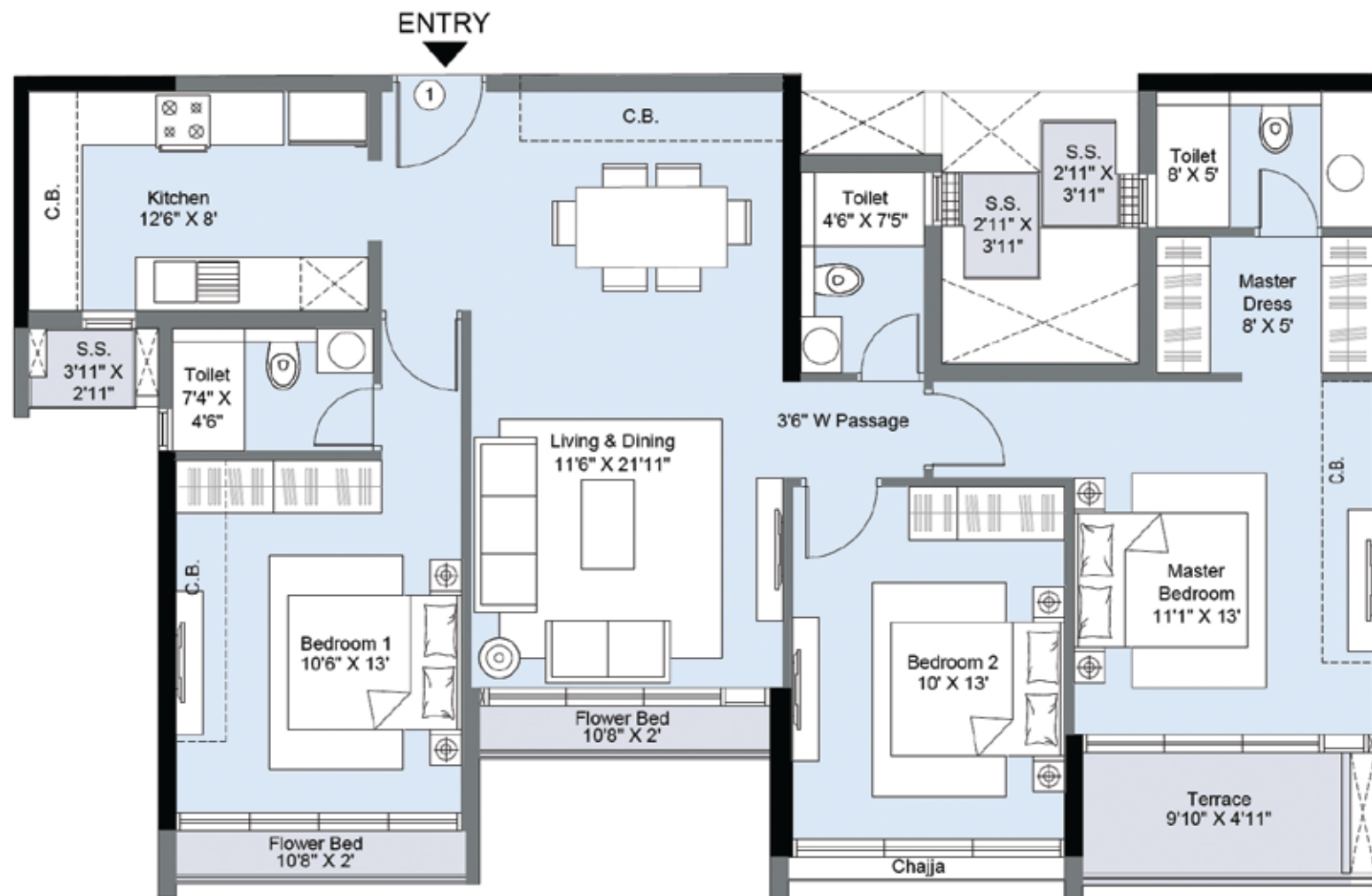
Key Plan

\*C.B. = CUPBOARD

MahaRERA registered, details available at: <https://maharera.mahaonline.gov.in>



**D2 - 3<sup>th</sup>, 5<sup>th</sup>, 7<sup>th</sup>, 9<sup>th</sup>, 11<sup>th</sup>, 13<sup>th</sup> & 15<sup>th</sup> floor  
Unit No. 01 & 06 (3 BHK - Supreme 1)**

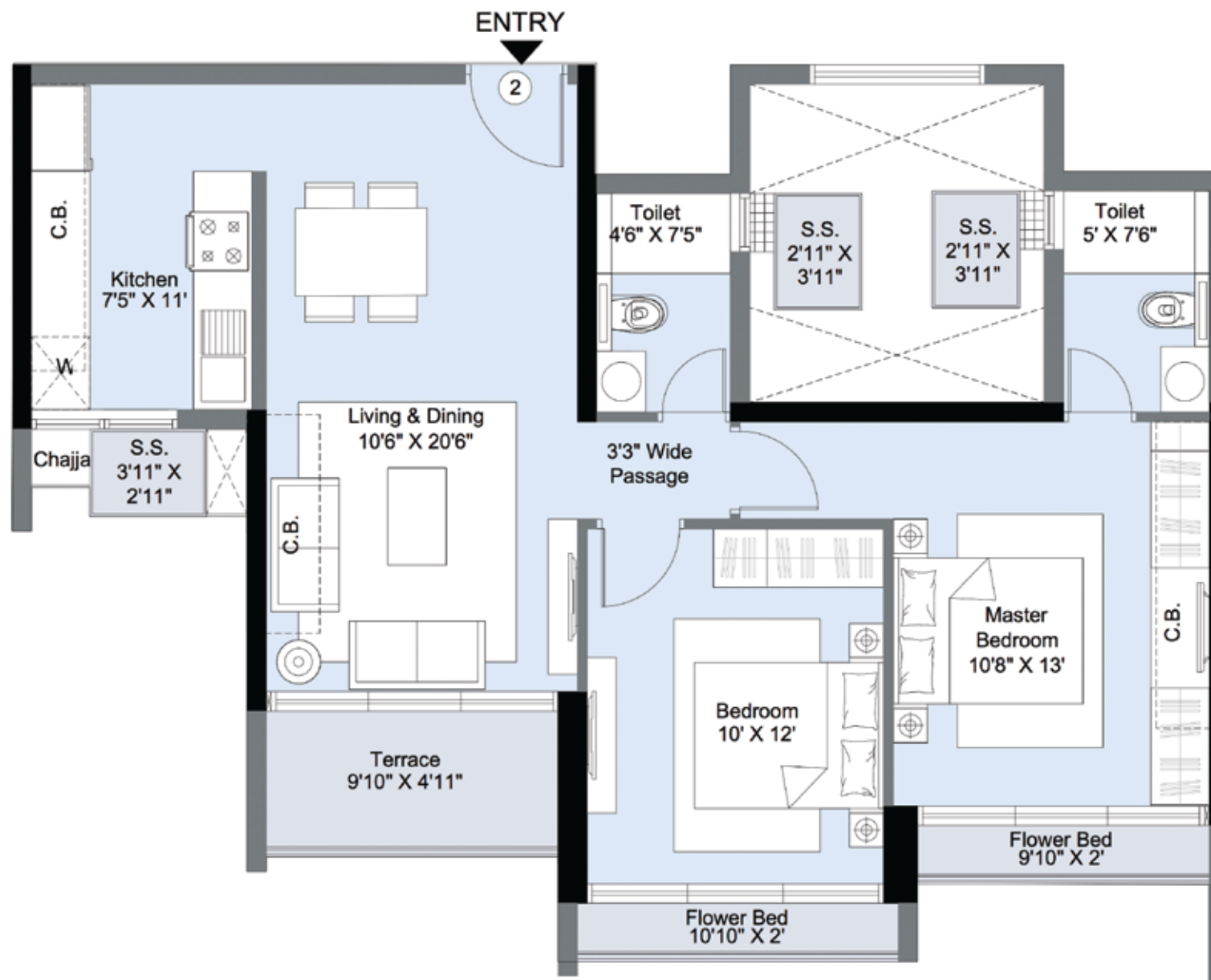


Key Plan

\*C.B. = CUPBOARD

MahaRERA registered, details available at: <https://maharera.mahaonline.gov.in>

**D2 - 4<sup>th</sup>, 6<sup>th</sup>, 8<sup>th</sup>, 10<sup>th</sup>, 12<sup>th</sup> & 14<sup>th</sup> Floor**  
**Unit No. 02 (2 BHK - Elegante)**

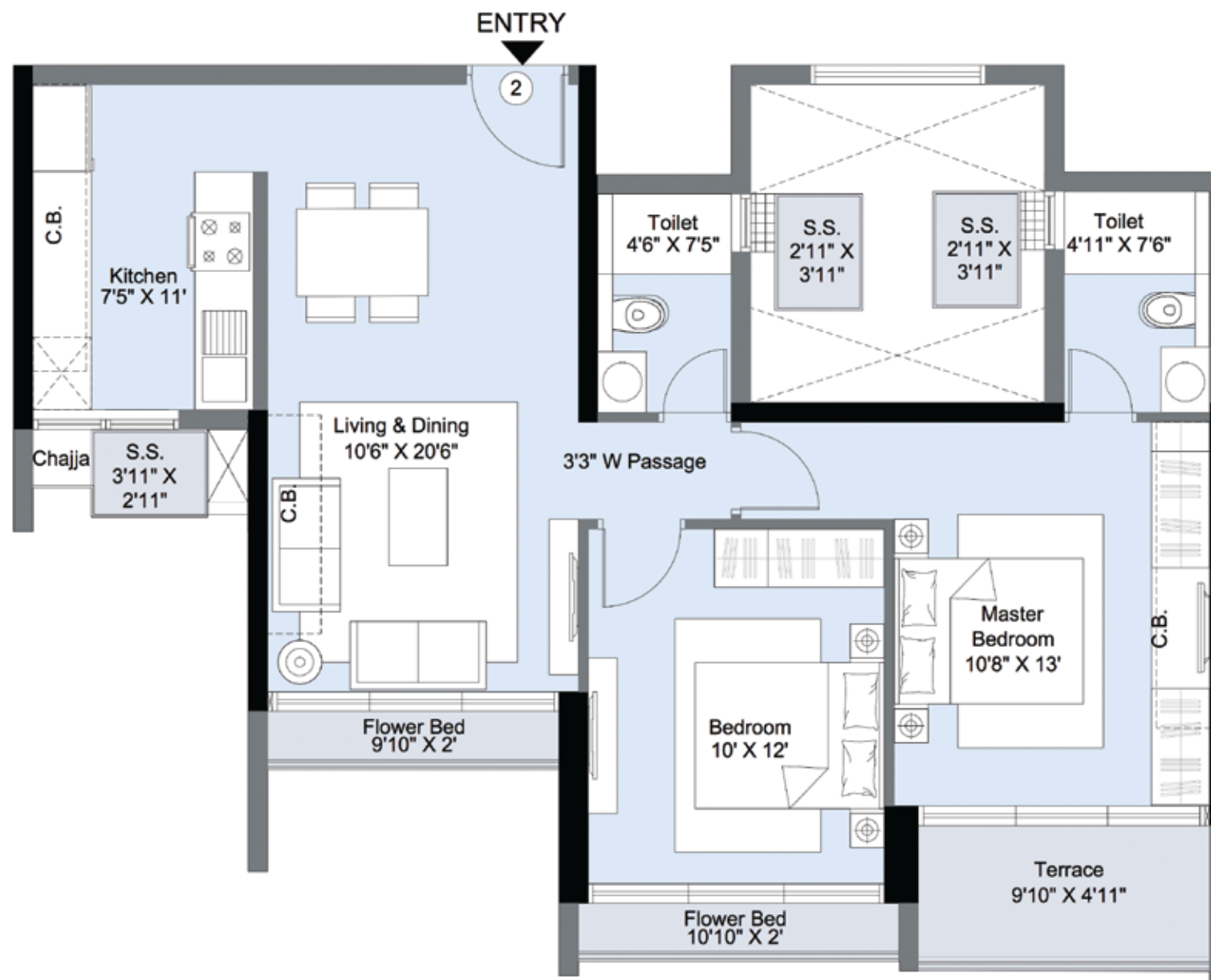


Key Plan

\*C.B. = CUPBOARD

MahaRERA registered, details available at: <https://maharera.mahaonline.gov.in>

**D2 - 3<sup>th</sup>, 5<sup>th</sup>, 7<sup>th</sup>, 9<sup>th</sup>, 11<sup>th</sup>, 13<sup>th</sup> & 15<sup>th</sup> Floor**  
**Unit No. 02 (2 BHK - Elegante)**



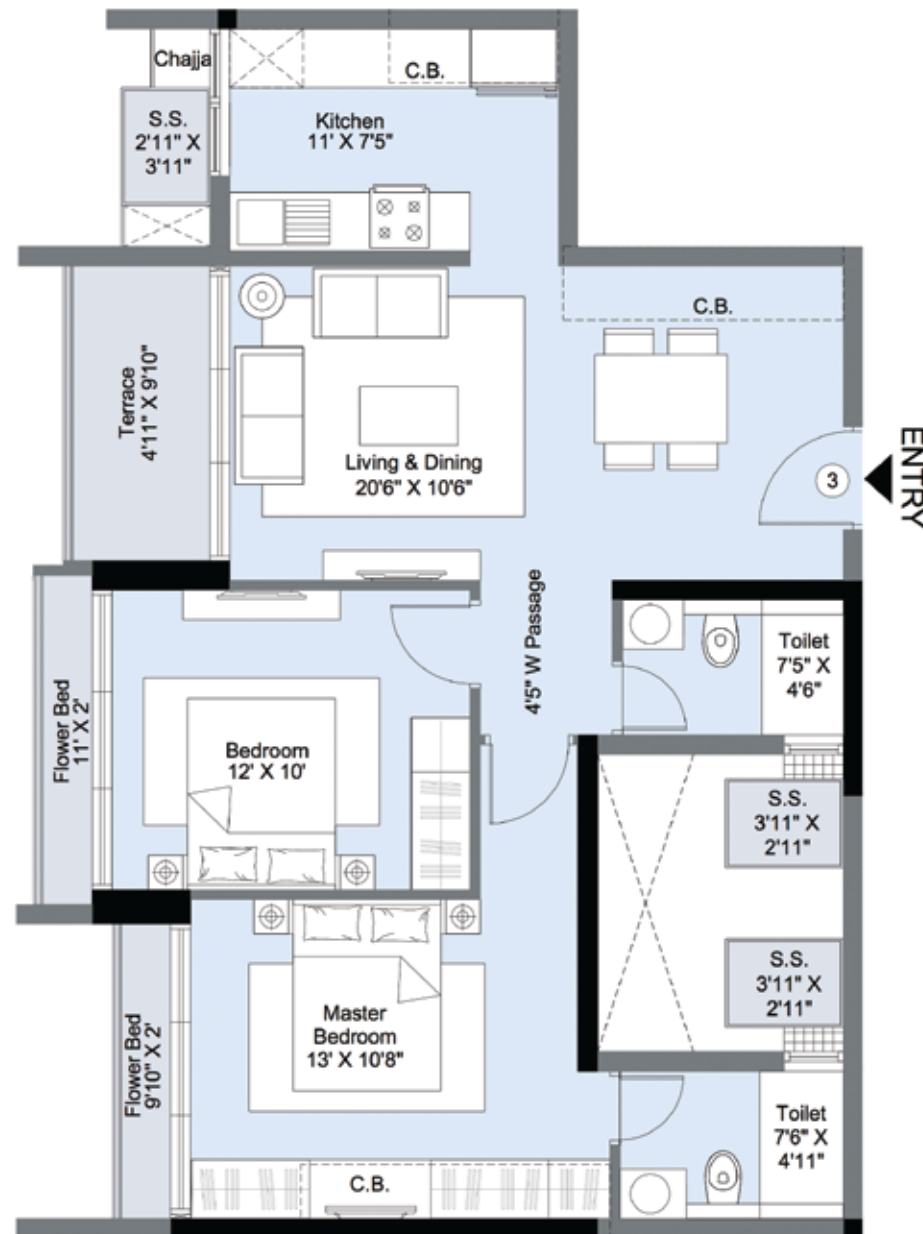
\*C.B. = CUPBOARD

MahaRERA registered, details available at: <https://maharera.mahaonline.gov.in>



Key Plan

## D2 - 4<sup>th</sup>, 6<sup>th</sup>, 8<sup>th</sup>, 10<sup>th</sup>, 12<sup>th</sup> & 14<sup>th</sup> Floor Unit No. 03 (2 BHK - Elegante)

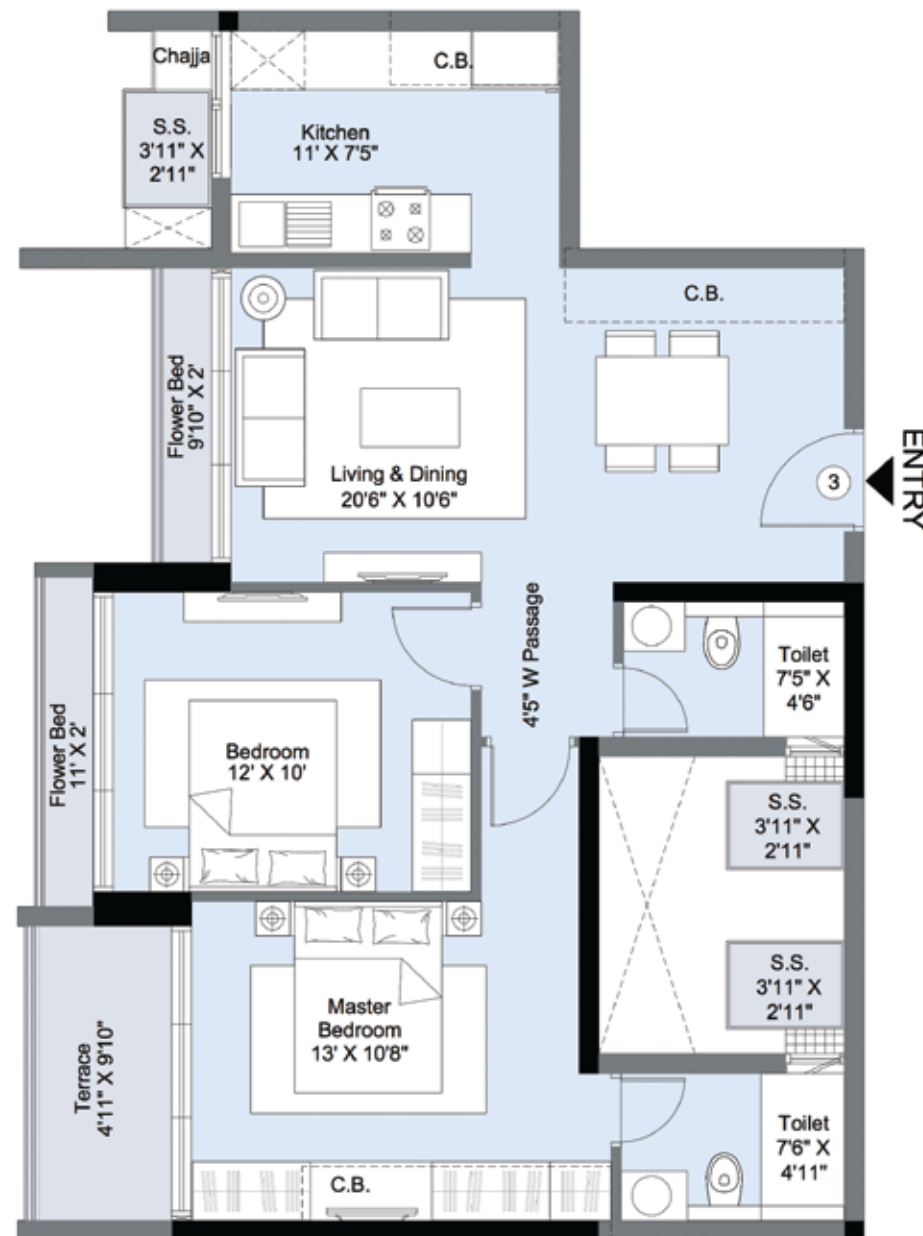


Key Plan

\*C.B. = CUPBOARD

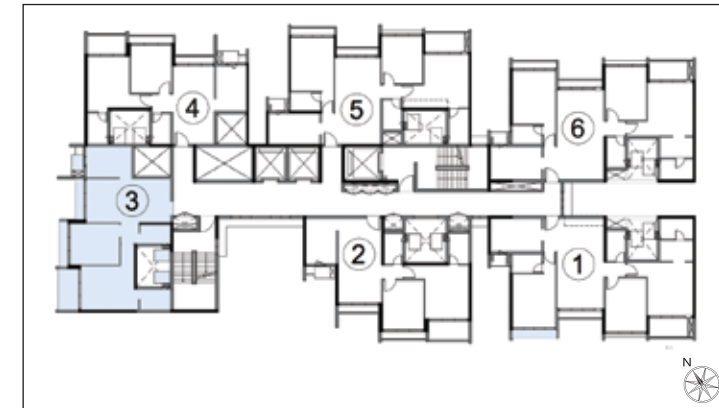
MahaRERA registered, details available at: <https://maharera.mahaonline.gov.in>

## D2 - 3<sup>th</sup>, 5<sup>th</sup>, 7<sup>th</sup>, 9<sup>th</sup>, 11<sup>th</sup>, 13<sup>th</sup> & 15<sup>th</sup> Floor Unit No. 03 (2 BHK - Elegante)



\*C.B. = CUPBOARD

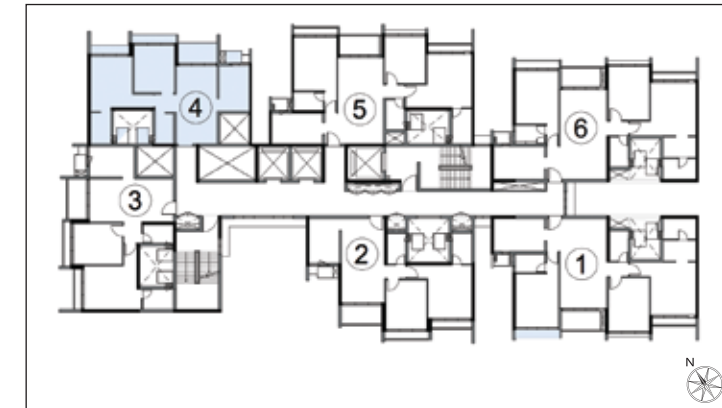
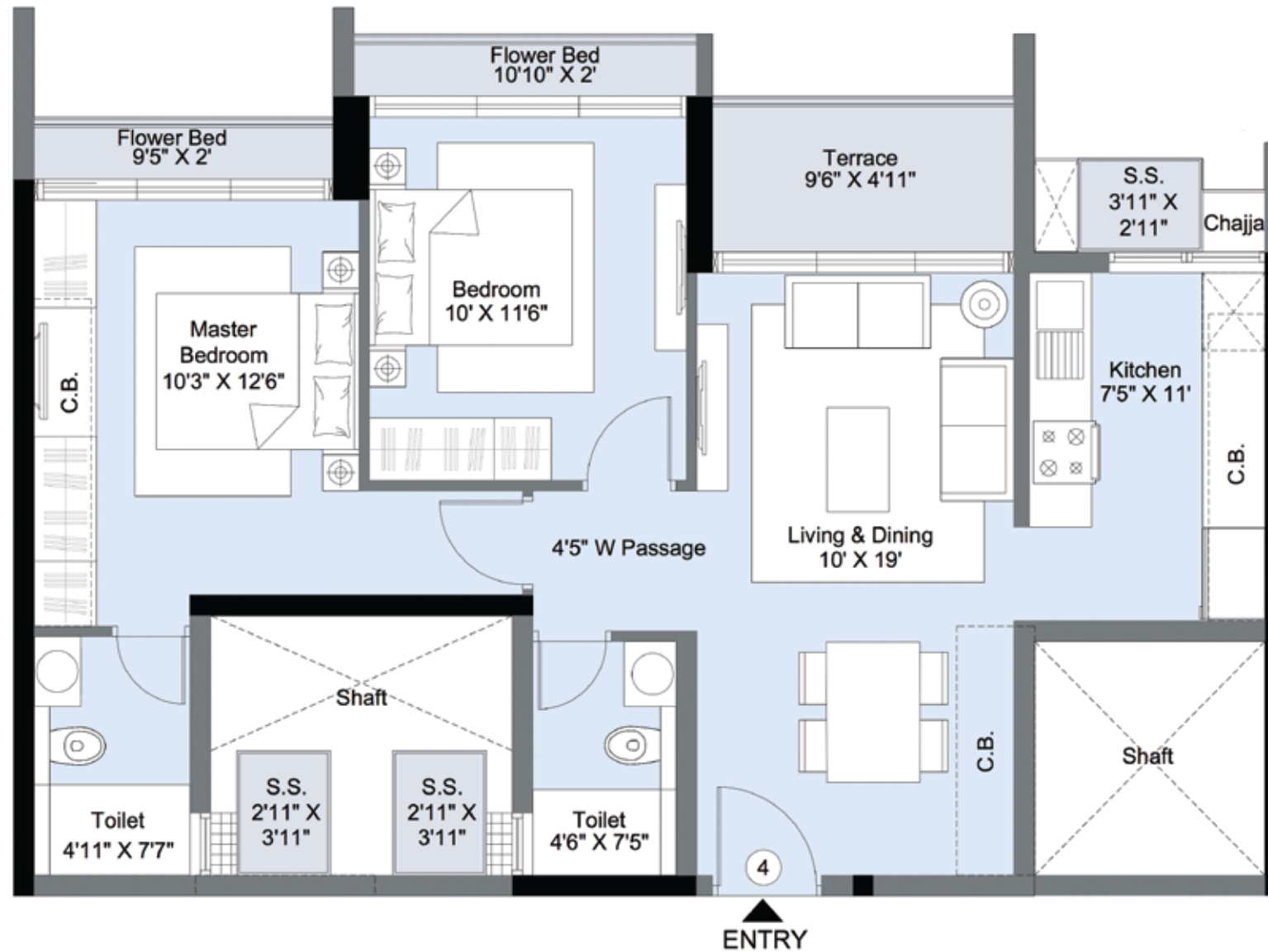
MahaRERA registered, details available at: <https://maharera.mahaonline.gov.in>



Key Plan



**D2 - 4<sup>th</sup>, 6<sup>th</sup>, 8<sup>th</sup>, 10<sup>th</sup>, 12<sup>th</sup> & 14<sup>th</sup> Floor**  
**Unit No. 04 (2 BHK - Elite)**

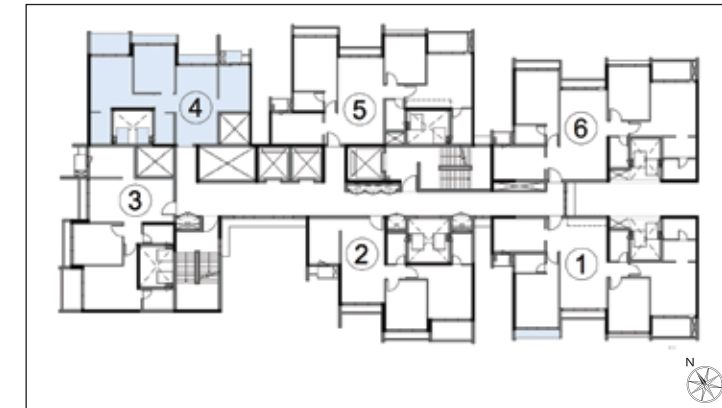
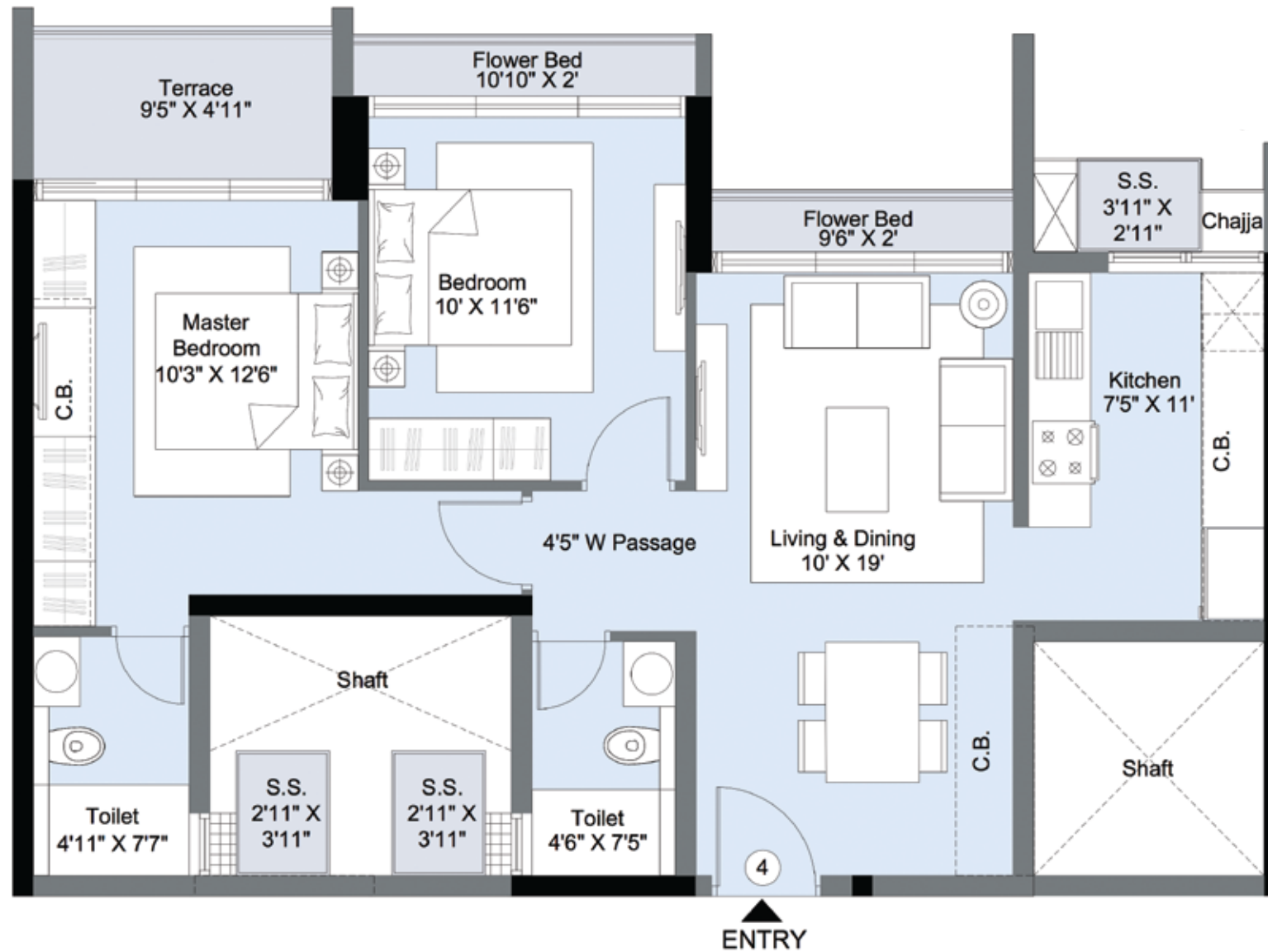


Key Plan

\*C.B. = CUPBOARD

MahaRERA registered, details available at: <https://maharera.mahaonline.gov.in>

## D2 - 3<sup>th</sup>, 5<sup>th</sup>, 7<sup>th</sup>, 9<sup>th</sup>, 11<sup>th</sup>, 13<sup>th</sup> & 15<sup>th</sup> Floor Unit No. 04 (2 BHK - Elite)



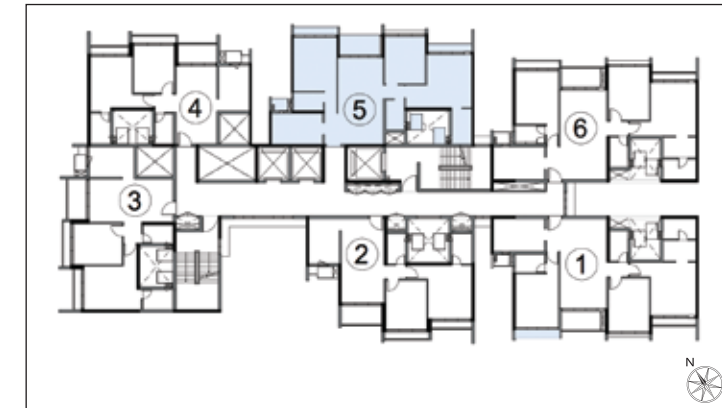
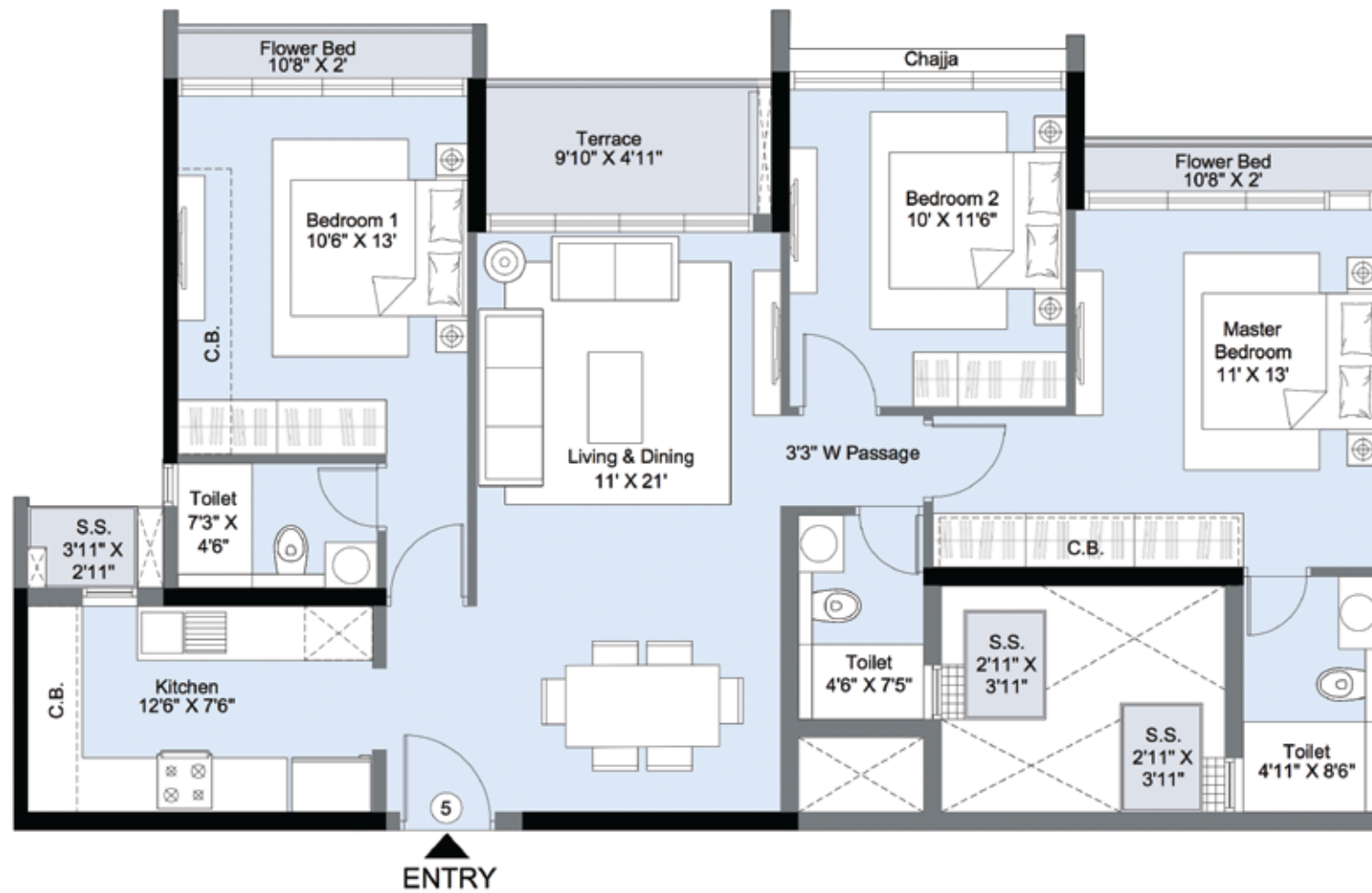
Key Plan

\*C.B. = CUPBOARD

MahaRERA registered, details available at: <https://maharera.mahaonline.gov.in>



## D2 - 4<sup>th</sup>, 6<sup>th</sup>, 8<sup>th</sup>, 10<sup>th</sup>, 12<sup>th</sup> & 14<sup>th</sup> Floor Unit No. 05 (3 BHK - Grandio)

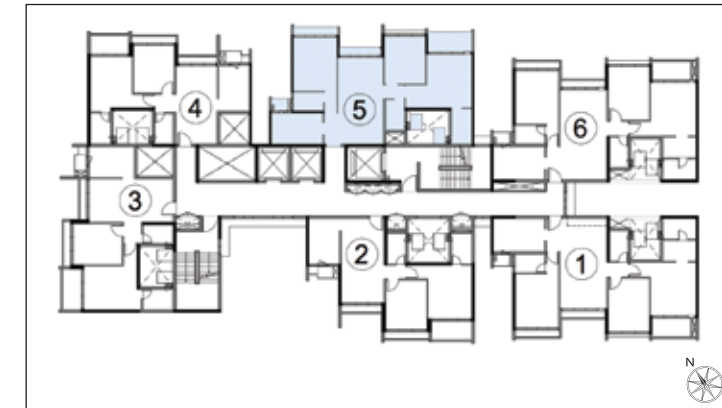
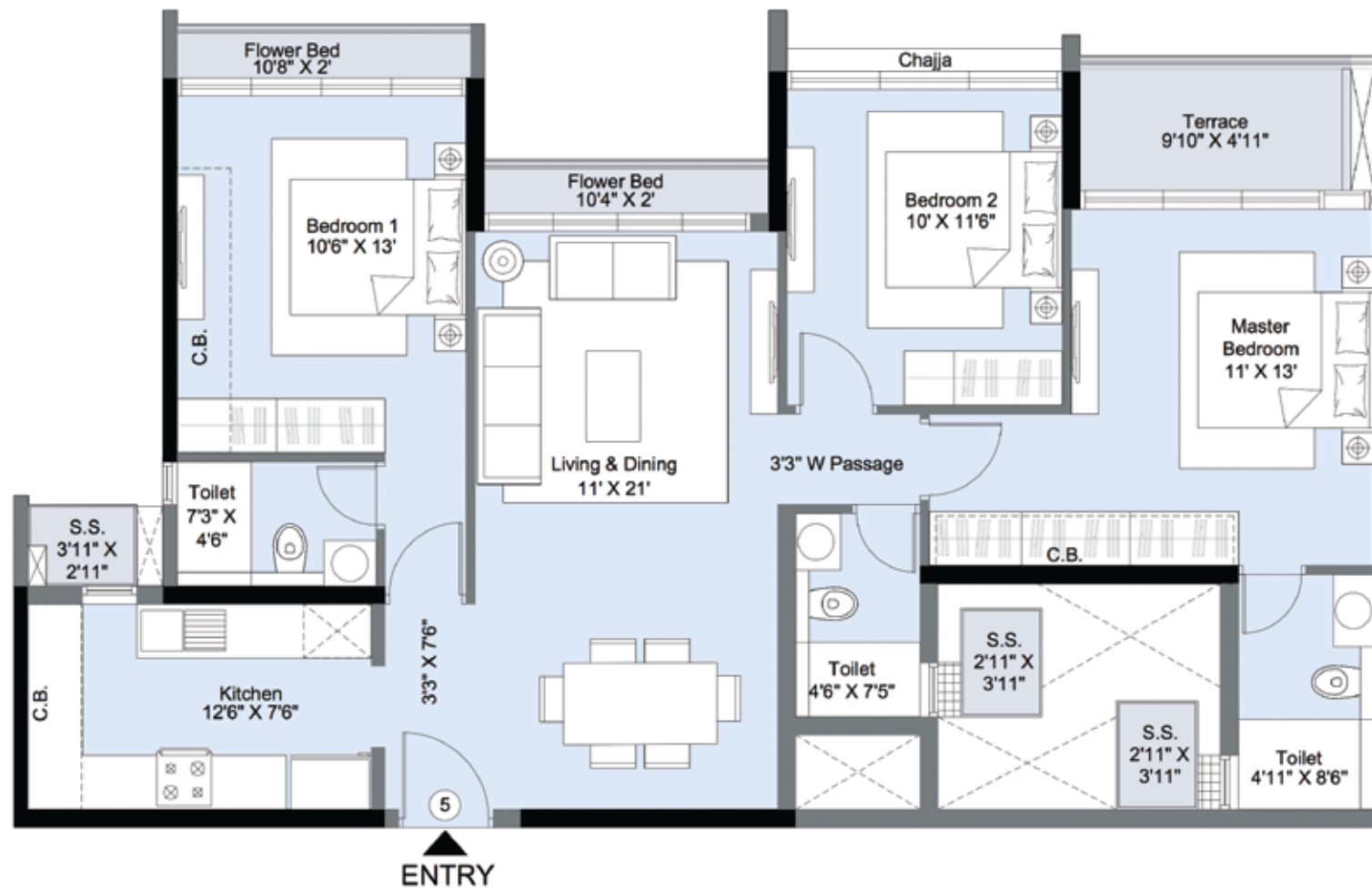


Key Plan

\*C.B. = CUPBOARD

MahaRERA registered, details available at: <https://maharera.mahaonline.gov.in>

**D2 - 3<sup>th</sup>, 5<sup>th</sup>, 7<sup>th</sup>, 9<sup>th</sup>, 11<sup>th</sup>, 13<sup>th</sup> & 15<sup>th</sup> Floor**  
**Unit No. 05 (3 BHK - Grandio)**

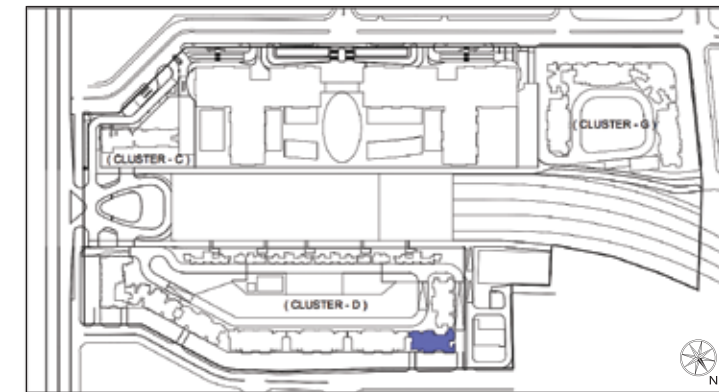


Key Plan

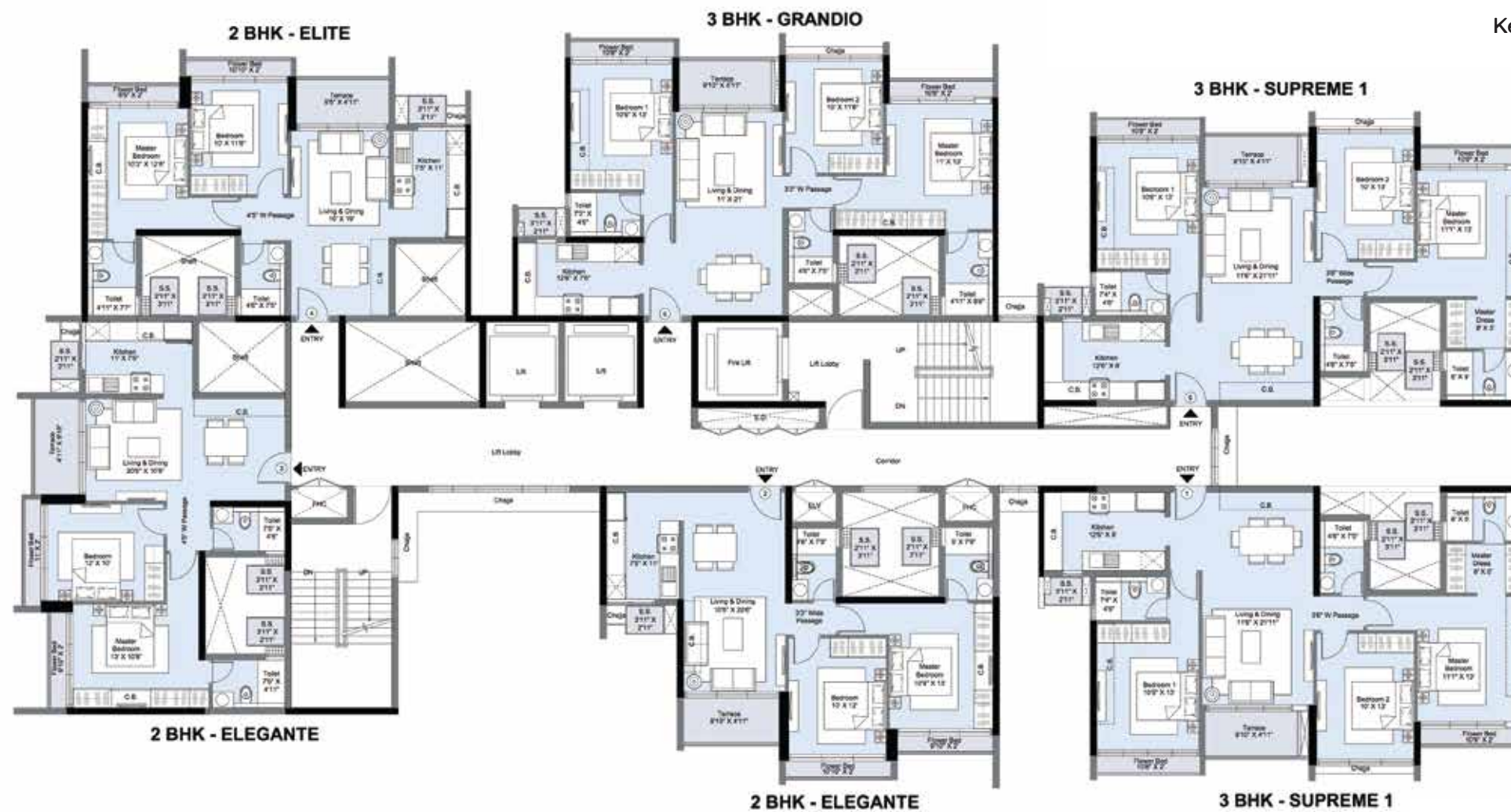
\*C.B. = CUPBOARD

MahaRERA registered, details available at: <https://maharera.mahaonline.gov.in>

## D2 - Typical Floor Plan - 4<sup>th</sup>, 6<sup>th</sup>, 10<sup>th</sup> & 14<sup>th</sup> Floor



Key Plan



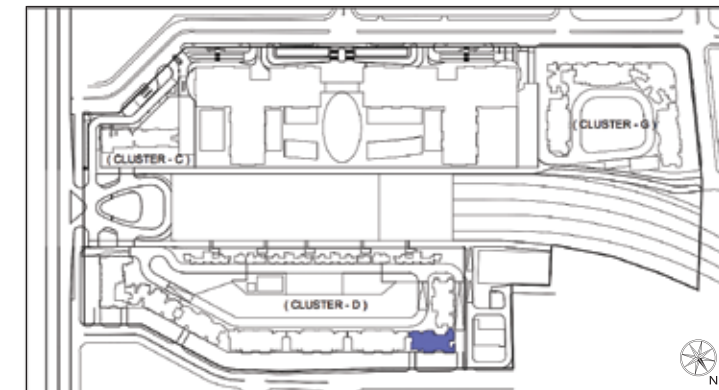
\*C.B. = CUPBOARD

MahaRERA registered, details available at: <https://maharera.mahaonline.gov.in>





## D2 - Typical Floor Plan - 3<sup>th</sup>, 5<sup>th</sup>, 7<sup>th</sup>, 9<sup>th</sup>, 11<sup>th</sup>, 13<sup>th</sup> & 15<sup>th</sup> Floor



Key Plan

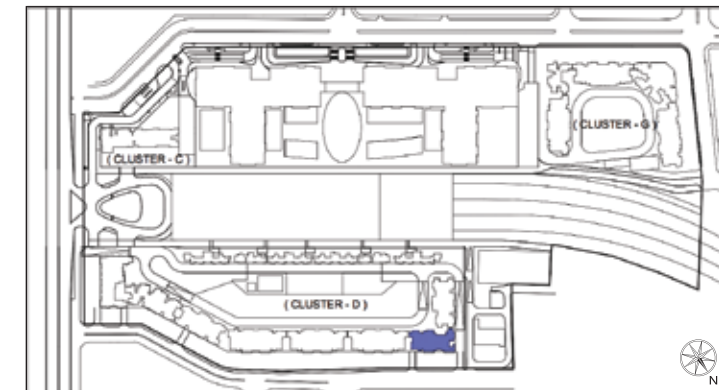


\*C.B. = CUPBOARD

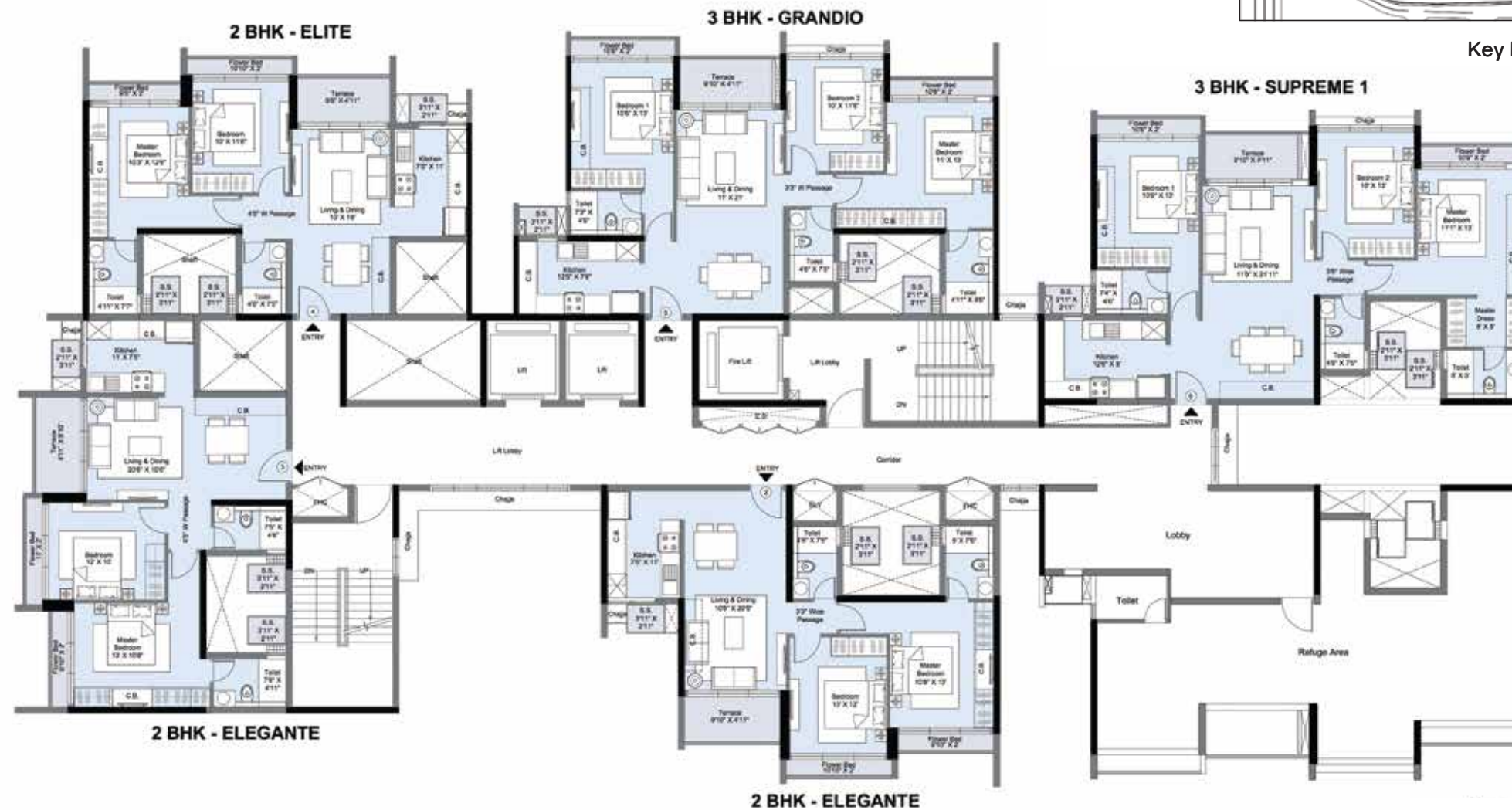
MahaRERA registered, details available at: <https://maharera.mahaonline.gov.in>



## D2 - Typical Floor Plan - 8<sup>th</sup> & 12<sup>th</sup> Floor



Key Plan



\*C.B. = CUPBOARD

MahaRERA registered, details available at: <https://maharera.mahaonline.gov.in>

