





"Make in India" is a core policy initiative intended to promote
Growth of The Country's Manufacturing Sector.
by Government of India



#MakeInIndia

India has already marked its presence as one of the fastest growing economies of the world. It has been ranked amongst the top 3 attractive destinations for inbound investments. Now with Make in India, the nation aspires to increase the share of manufacturing in the country's Gross Domestic Product (GDP) from 16% to 25% by 2022, with an increase of 12-14% per annum over the medium term. The government has announced an ambitious project- Make in India. This is a major new national program, designed to facilitate investment, foster innovation, enhance skill development, protect intellectual property and build best-in-class manufacturing infrastructure.

WHY CHOOSE **ARHAM?**



**HIGHWAY
CONNECTIVITY**

ARHAM PARK is giving you the benefit of highway connectivity for Easy Transport.



**24X7 POWER AND
WATER SUPPLY**

ARHAM PARK is pledging to get you 24*7 power supplies making it possible for you all to run the supply at full capacity.



SOLAR SOLUTION

ARHAM PARK gives you a great road with low maintenance solar lights which enhance the design and quality of the project



**PRIME LOCATION
FOR INDUSTRY
AND COMMERCIAL**

ARHAM PARK is in the progressive area, a fastly growing area in the future.



CCTV

24x7 Multi-band security surveillance with CCTV camera in all common spaces Intercom facility



EASY BANK LOAN

ARHAM PARK is establishing an easy bank loan for you so that there will be no hassle in getting a loan from banks.



**GOOD PLATFORM
FOR SMALL &
MEDIUM ENTERPRISE
BUSINESS OWNER**



FREE HOLD PROPERTY

ARHAM PARK Situation on a Free Hold Clear and Marketable Title full with Ownership Rights

**COME WITH
THE BUSINESS**

WE HAVE THE COMBINATIONS READY FOR YOU



**COME WITH
THE PEOPLE**

WE HAVE THE BEST STAFF FACILITIES FOR YOU



**COME WITH
THE IDEA**

WE HAVE A DREAM READY FOR YOU



**COME WITH
THE DESIRE**

WE GIVE THE BIGGEST SCOPE TO YOU



**COME WITH
THE RELIEF**

WE PROVIDE THE RIGHT LOCATION TO YOU



**COME WITH
THE EXPECTATION**

WE HAVE DEVELOPED A PROFIT CENTRE FOR YOU



**COME WITH
THE HOPE
FOR GROWTH**

WE PROVIDE THE BEST RETURN ON INVESTMENT



**COME WITH
THE MACHINERY**

WE HAVE HUGE SPACE READY FOR YOU



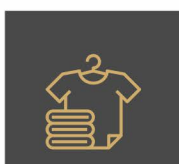
COME WITH THE BUSINESS



FURNITURE



**IMITATION
JEWELLERY**



GARMENTS



**ELECTRICAL
COMPONENTS**



PLASTIC



**AUTOMOBILE
INDUSTRY**



PRINTING



PHARMACEUTICALS



FOOD



COSMETICS

Then, you can select from any one of these



RCC STRUCTURE

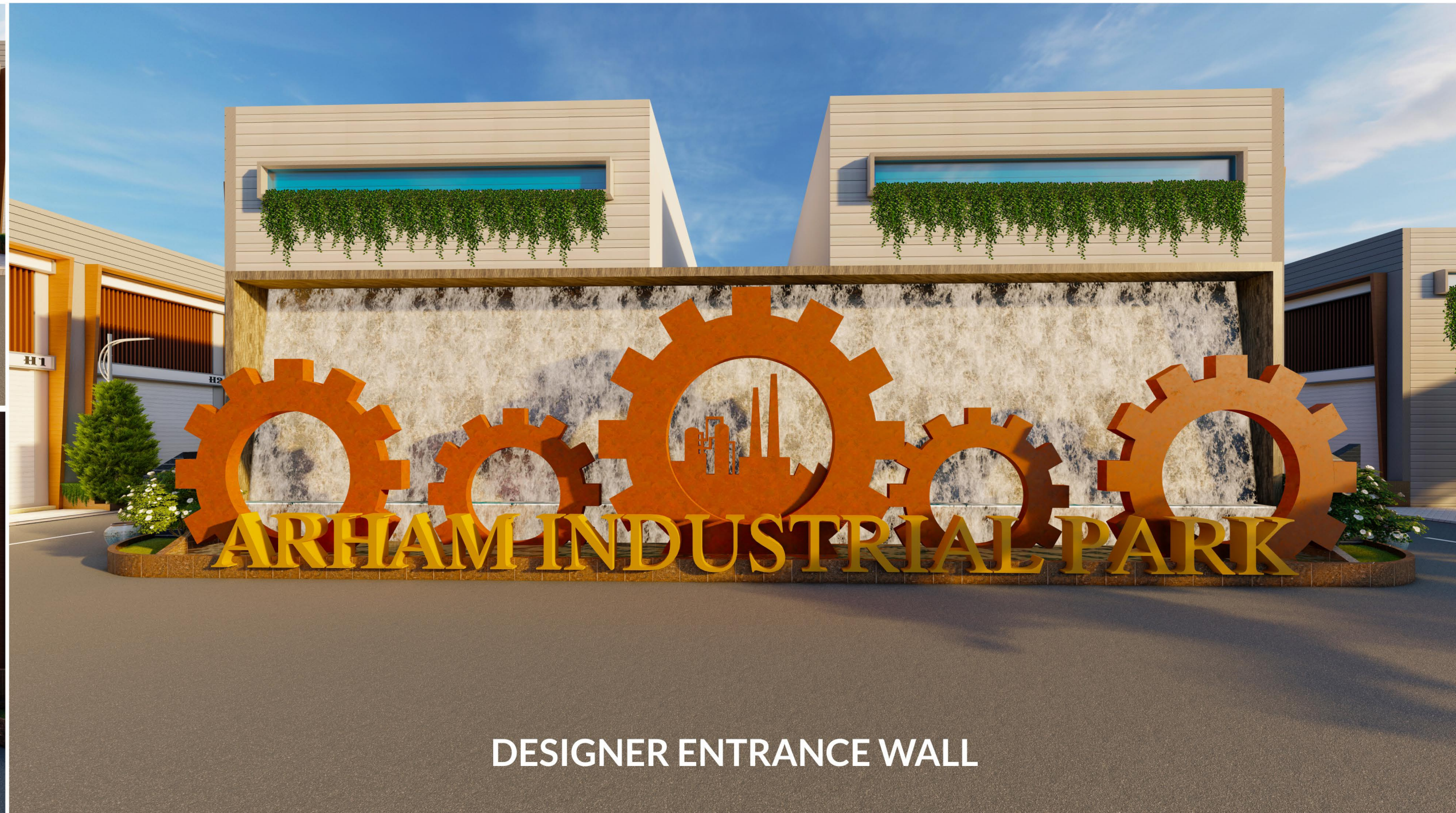


INDUSTRIAL SHEDS

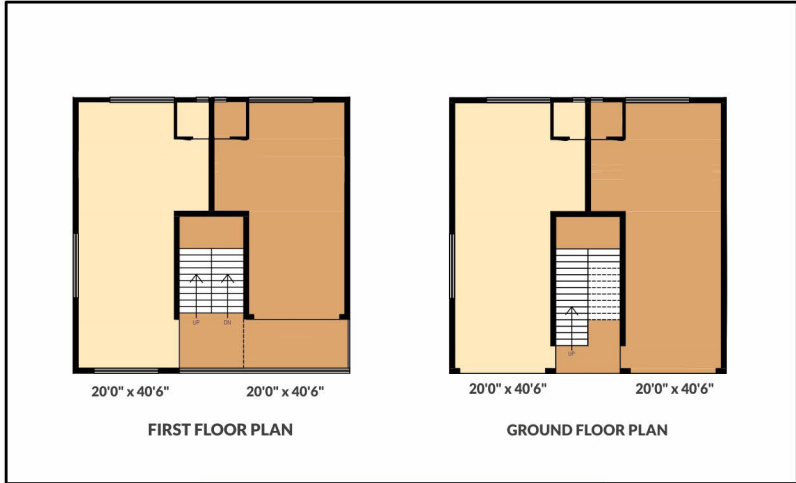


**COMMERCIAL UNITS
& DISPLAY CENTRES**

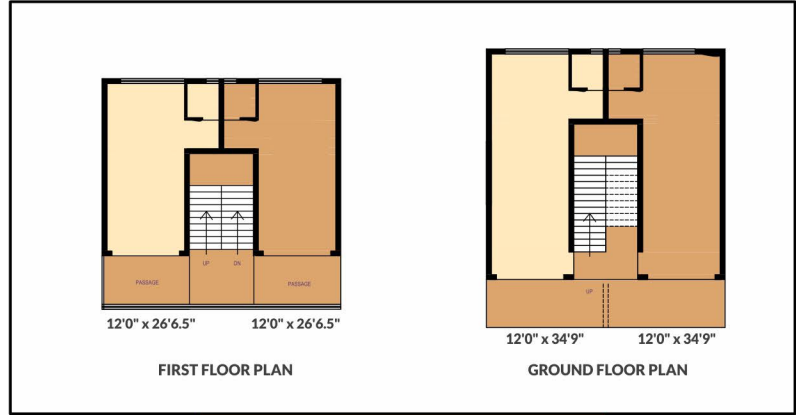




Layout Plan



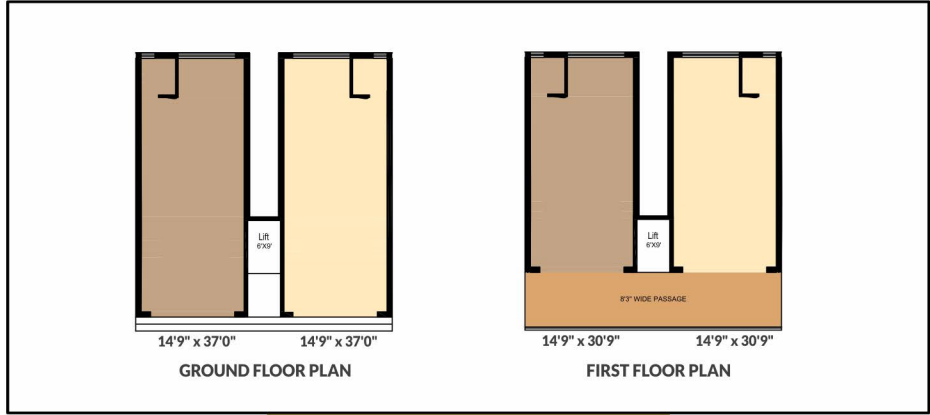
TYPICAL INDUSTRIAL SHED (B, C)



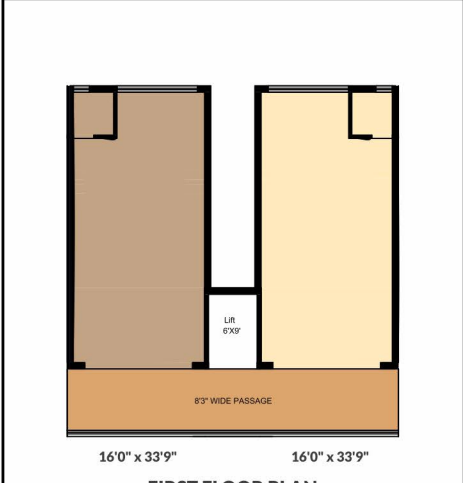
TYPICAL INDUSTRIAL SHED (H, I)



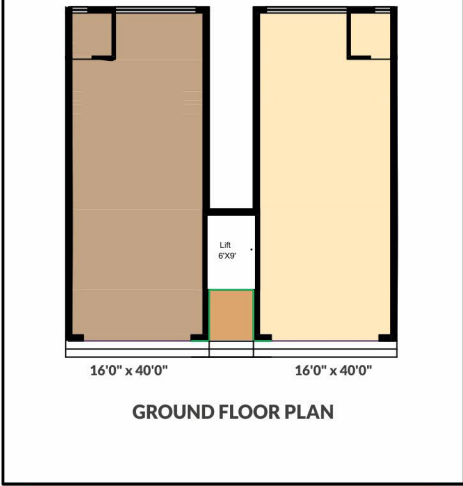
TYPICAL INDUSTRIAL SHED (D, E, F, G)



TYPICAL INDUSTRIAL SHED (J)



TYPICAL INDUSTRIAL SHED (K, L)



SOMETIMES WHEN YOU HAVE IT ALL

ARHAM INDUSTRIAL PARK is Surrounded by major Industrial parks and many GIDC roads of Valsad District & Very good desired location for The Manufacturer, Distributors, Commercial & Logistic as well as many more Companies

Among the advantages of a solid workforce, strong manufacturing base, three key interstates, and a major air shipping hub, which has created countless opportunities for manufacturing companies and a strategic solution for many companies' supply chain strategies

INDUSTRIAL



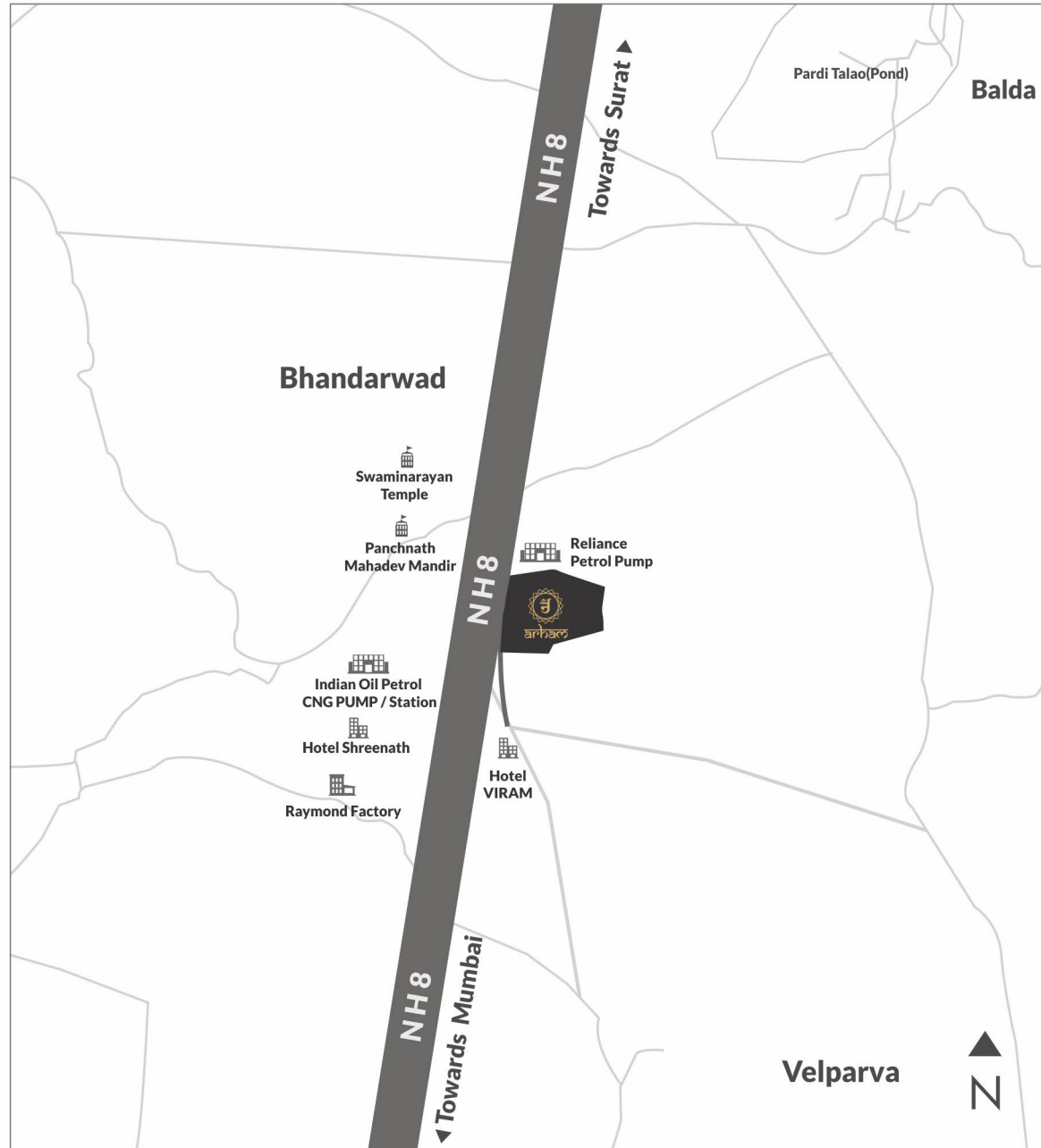
Building - H



Building - K

LOCATION MAP

THEY SAY THE FIRST THREE CRITERIA FOR BUYING A REAL ESTATE ARE LOCATION, LOCATION, LOCATION.



Arham focuses on the development of commercial and industrial real estate with a strong emphasis on practical design, high-quality, and maintenance support.

Arham strives towards a high level of client and investor satisfaction by having a transparent engagement model and a higher standard of service delivery.

with wide RCC roads, avenues and paved footpaths, Arham is one of the swankiest new addresses in Pardi. Home to several multinational companies, foreign consulates, National Highway 8.

Distance

19km -From Vapi, GIDC

5km -From Pardi, GIDC

14km -From Valsad

5km -From Pardi Railway Station

7km -From Costal Highway

13km -From Gundlav GIDC

ARHAM INDUSTRIAL PARK

Survey no : 500/1, Beside Reliance Petrol Pump (to wards Bombay)Opp: Trimurti Panchnath Mahadev Mandir on NH-8, Pardi, Dist : Valsad - 396125.

☎ 97 12 347 348

✉ arhamindustrialpark@gmail.com

 /ArhamIndustrialPark

 /ArhamIndustrialPark



SCAN FOR LOCATION