

DREAM HOMES ARE NEVER DISTANT
FROM ALL THAT YOU LOVE



 RUNWAL
elina
Andheri East



PART OC RECEIVED

ARTIST'S IMPRESSION



**READY-TO-MOVE-IN
SUPREME EDITION
RESIDENCES**
*now located near all
that's close to your heart*

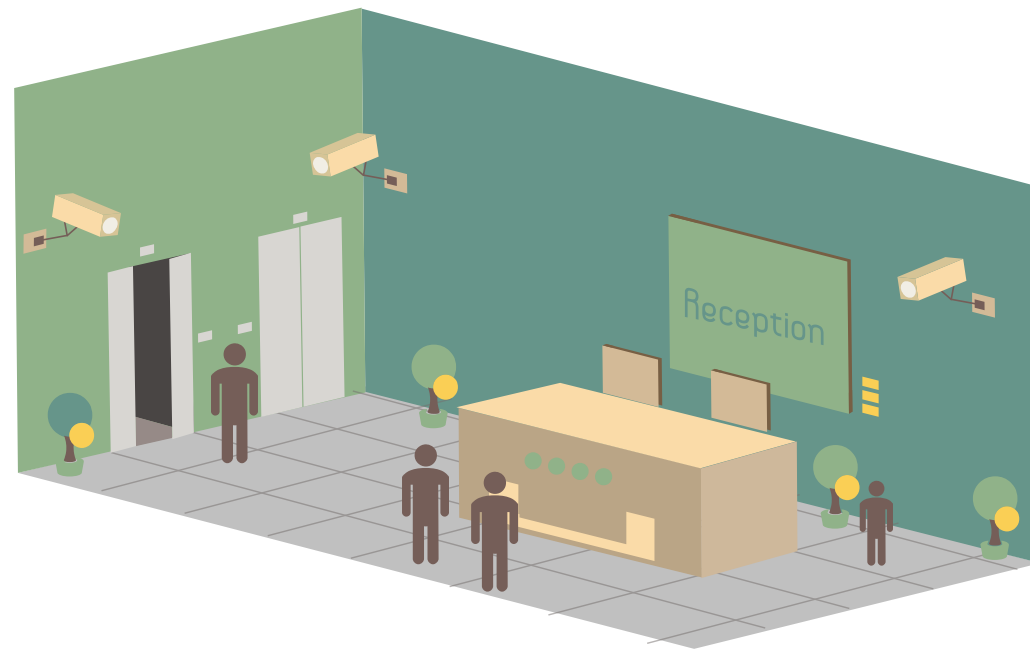
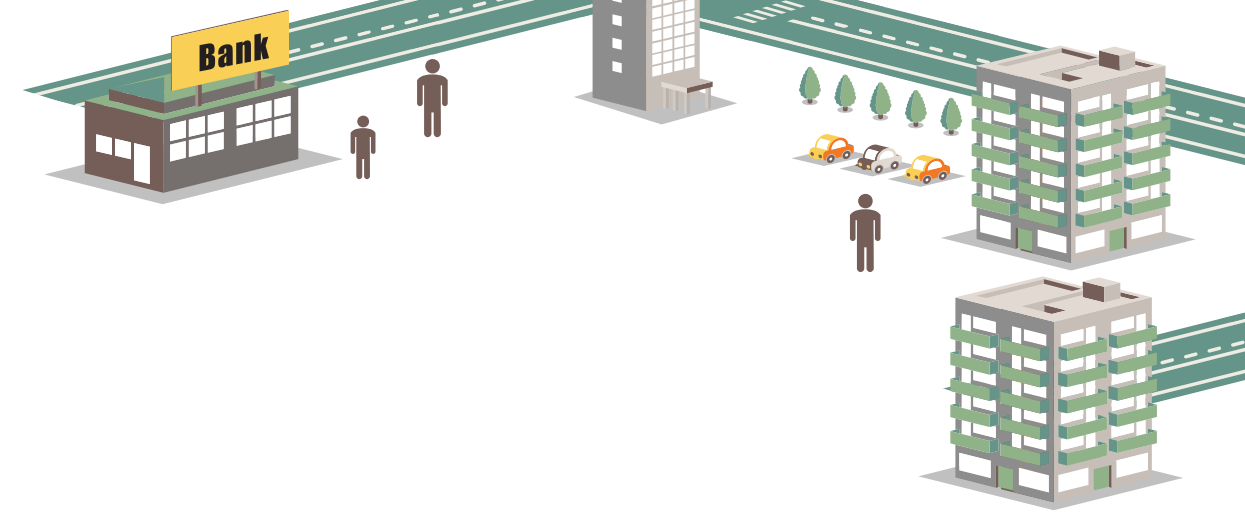




READY-TO-MOVE-IN SUPREME EDITION RESIDENCES

Strategically located in Sakinaka, Andheri East, everything you love is now close by. Now, you have ample time to enjoy your life to the fullest while living in one of the most significant suburbs of Mumbai. Complete with a Green/Recreational Space, a Fitness Centre & Multi-level Car Park. Runwal Elina

promises you a fulfilling life in your dream home. Moreover, with the latest pubs and leading fine-dining restaurants in the vicinity, the location buzzes with enthralling life after work. It's truly time to rejuvenate your life!



DREAM HOMES OFFER EXTRA CARE

EXTERNAL AMENITIES

- ~ Multi-level Car Park
- ~ Green/Recreational Space
- ~ Fitness Centre

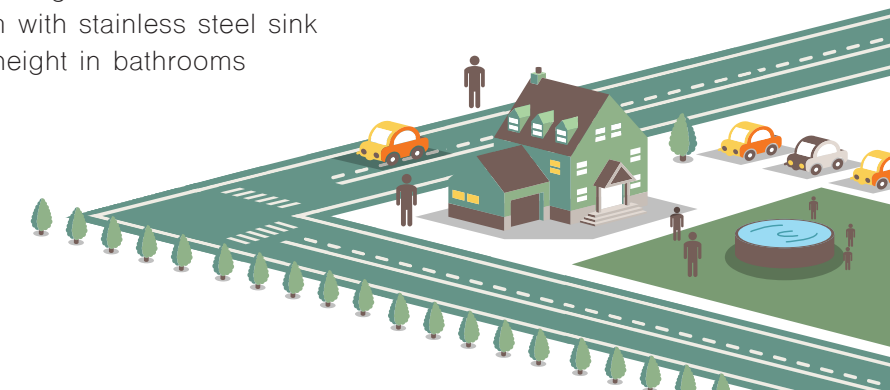
INTERNAL AMENITIES

In the Common Area:

- ~ Elegantly designed lobby
- ~ Modern elevators
- ~ Gypsum finish with acrylic paint on walls and ceilings
- ~ CCTV cameras in entrance lobby

In the Apartments:

- ~ Premium vitrified tile flooring
- ~ Granite kitchen platform with stainless steel sink
- ~ Dado tiles up to door height in bathrooms





HOME MEETS FORGOTTEN HOBBIES

How many hobbies have you given up? How much time have you lost with loved ones? These are questions that bother all of us whose work places are far away from home. We know this feeling, and we've decided to change it. Runwal Elina's strategic location gives you extra

time to pursue all that you love. Pick up an old hobby or a new one. Spend more time with family at home, restaurants or other places of fun. Your home now gives you more time to spend on all that's close to your heart.

HIGHLIGHTS OF LIVING AT RUNWAL ELINA

- ~ 800m from Sakinaka Metro Station
- ~ 2.6km from the International Airport and 5 Star Hotels
- ~ 5.2km from the Western Express Highway
- ~ 6.5km from Andheri Station
- ~ 6.5km from IIT, Mumbai
- ~ 9km from the Eastern Express Highway via JVLR

Distances as per Google Maps





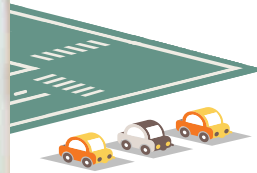
Actual Image of Elevation



Actual Image of show residence



Actual Image of show residence

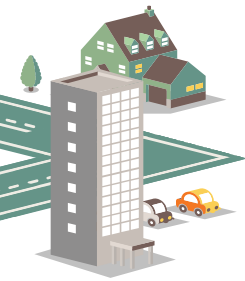
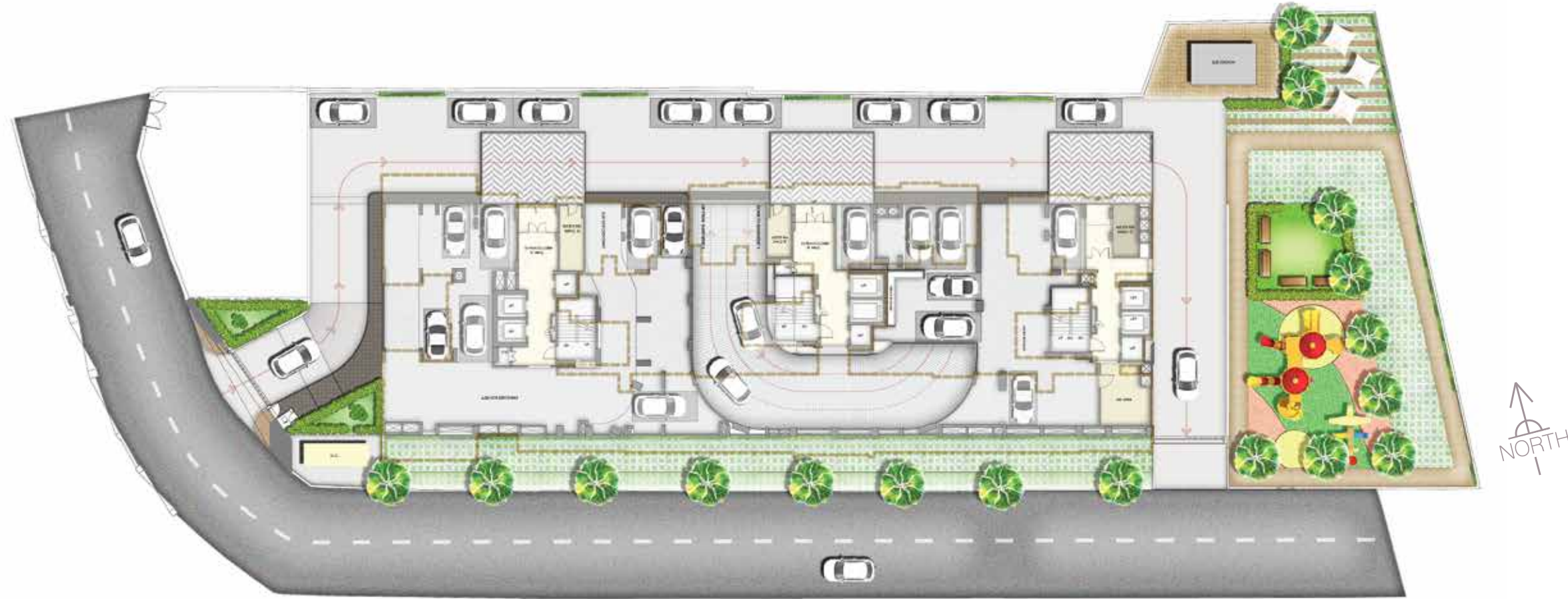


CRAFTED WITH PERFECTION,
EVERY RESIDENCE HERE IS
ENTHRALLING AND INVITING



RUNWAL ELINA

LAYOUT PLAN



The images and other details herein are only indicative. The Developer / Owner reserves the right to change any or all of these in the interest of the development, as per provision of law. Artist's impressions are used to illustrate amenities, specifications, images and other details. Tolerance of +/- 3% is possible in the unit areas on account of design and construction variances. All brands stated are subject to final decision of the project architect. This electronic / printed material does not constitute an offer and/or contract of any type between the Developer / Owner and the recipient. No booking or allotment shall be deemed to have been made on the basis of this electronic / printed material. Any Purchaser / Lessee of this development shall be governed by the terms and conditions of the agreement for sale / lease entered into between the parties, and no details mentioned in this electronic / printed material shall in any way govern such transactions unless as may be otherwise expressly provided in the agreement for

sale/lease by the Developer / Owner. The Developer / Owner does not warrant or assume any liability or responsibility for the accuracy or completeness of any information contained herein. Project presently financed by Aditya Birla Finance Ltd. and NOC / permission of Aditya Birla Finance Ltd. will be obtained for sale of property, if required. This electronic / printed material has been created keeping in mind the provisions of the Real Estate (Regulation and Development) Act, 2016 (RERA) applicable for projects in Maharashtra. You are required to verify all the details, including area, amenities, services, terms of sales and payments and other relevant terms independently with the Developer sales team only, by physically visiting the project site and the authorised website of RERA. You are requested NOT to visit any unauthorized or unverified website/broker (online / offline) to receive any information about any projects of the Developer and/or its sister concerns.

WING (A)
TYPICAL FLOOR PLAN
 (1ST TO 5TH & 9TH TO 13TH)



WING (A)
8TH FLOOR PLAN



The images and other details herein are only indicative. The Developer / Owner reserves the right to change any or all of these in the interest of the development, as per provision of law. Artist's impressions are used to illustrate amenities, specifications, images and other details. Tolerance of +/- 3% is possible in the unit areas on account of design and construction variances. All brands stated are subject to final decision of the project architect. This electronic / printed material does not constitute an offer and/or contract of any type between the Developer / Owner and the recipient. No booking or allotment shall be deemed to have been made on the basis of this electronic / printed material. Any Purchaser / Lessee of this development shall be governed by the terms and conditions of the agreement for sale / lease entered into between the parties, and no details mentioned in this electronic / printed material shall in any way govern such transactions unless as may be otherwise expressly provided in the agreement for

sale/lease by the Developer / Owner. The Developer / Owner does not warrant or assume any liability or responsibility for the accuracy or completeness of any information contained herein. Project presently financed by Aditya Birla Finance Ltd. and NOC / permission of Aditya Birla Finance Ltd. will be obtained for sale of property, if required. This electronic / printed material has been created keeping in mind the provisions of the Real Estate (Regulation and Development) Act, 2016 (RERA) applicable for projects in Maharashtra. You are required to verify all the details, including area, amenities, services, terms of sales and payments and other relevant terms independently with the Developer sales team only, by physically visiting the project site and the authorised website of RERA. You are requested NOT to visit any unauthorized or unverified website/broker (online / offline) to receive any information about any projects of the Developer and/or its sister concerns.

WING (B)
TYPICAL FLOOR PLAN
1ST TO 6TH FLOOR



WING (B)
REFUGE FLOOR PLAN
7TH FLOOR



The images and other details herein are only indicative. The Developer / Owner reserves the right to change any or all of these in the interest of the development, as per provision of law. Artist's impressions are used to illustrate amenities, specifications, images and other details. Tolerance of +/- 3% is possible in the unit areas on account of design and construction variances. All brands stated are subject to final decision of the project architect. This electronic / printed material does not constitute an offer and/or contract of any type between the Developer / Owner and the recipient. No booking or allotment shall be deemed to have been made on the basis of this electronic / printed material. Any Purchaser / Lessee of this development shall be governed by the terms and conditions of the agreement for sale / lease entered into between the parties, and no details mentioned in this electronic / printed material shall in any way govern such transactions unless as may be otherwise expressly provided in the agreement for

sale/lease by the Developer / Owner. The Developer / Owner does not warrant or assume any liability or responsibility for the accuracy or completeness of any information contained herein. Project presently financed by Aditya Birla Finance Ltd. and NOC / permission of Aditya Birla Finance Ltd. will be obtained for sale of property, if required. This electronic / printed material has been created keeping in mind the provisions of the Real Estate (Regulation and Development) Act, 2016 (RERA) applicable for projects in Maharashtra. You are required to verify all the details, including area, amenities, services, terms of sales and payments and other relevant terms independently with the Developer sales team only, by physically visiting the project site and the authorised website of RERA. You are requested NOT to visit any unauthorized or unverified website/broker (online / offline) to receive any information about any projects of the Developer and/or its sister concerns.

WING (B)
TYPICAL FLOOR PLAN
8TH TO 13TH FLOOR



The images and other details herein are only indicative. The Developer / Owner reserves the right to change any or all of these in the interest of the development, as per provision of law. Artist's impressions are used to illustrate amenities, specifications, images and other details. Tolerance of +/- 3% is possible in the unit areas on account of design and construction variances. All brands stated are subject to final decision of the project architect. This electronic / printed material does not constitute an offer and/or contract of any type between the Developer / Owner and the recipient. No booking or allotment shall be deemed to have been made on the basis of this electronic / printed material. Any Purchaser / Lessee of this development shall be governed by the terms and conditions of the agreement for sale / lease entered into between the parties, and no details mentioned in this electronic / printed material shall in any way govern such transactions unless as may be otherwise expressly provided in the agreement for sale/lease by the Developer / Owner. The Developer / Owner does not warrant or assume any liability or responsibility for the accuracy or completeness of any information contained herein. Project presently financed by Aditya Birla Finance Ltd. and NOC / permission of Aditya Birla Finance Ltd. will be obtained for sale of property, if required. This electronic / printed material has been created keeping in mind the provisions of the Real Estate (Regulation and Development) Act, 2016 (RERA) applicable for projects in Maharashtra. You are required to verify all the details, including area, amenities, services, terms of sales and payments and other relevant terms independently with the Developer sales team only, by physically visiting the project site and the authorised website of RERA. You are requested NOT to visit any unauthorized or unverified website/broker (online / offline) to receive any information about any projects of the Developer and/or its sister concerns.

RUNWAL DEVELOPERS

Established in 1978, the Runwal Developers is one of Mumbai's premier real estate developers, operating in the residential, commercial and organised retail verticals.

With a robust track record of 51 delivered projects, with over 20,000 happy families, the Group has continuously striven to keep the customer as a focal point in the designing, planning and construction of all its projects.

Today, the Group's steadfast focus on quality has led it to become an industry leader and a market-driven construction company, renowned for trust and quality, along with on-time delivery.

ONGOING PROJECTS

- Runwal Anthurium
- Eirene
- Runwal Garden City - Dahlia
- Runwal Elegante
- MyCity, Dombivli
- The Residence
- Nirvana
- Runwal Pearl
- Runwal Elina
- Runwal Serene
- The Reserve
- Runwal Infinity

OFFICES

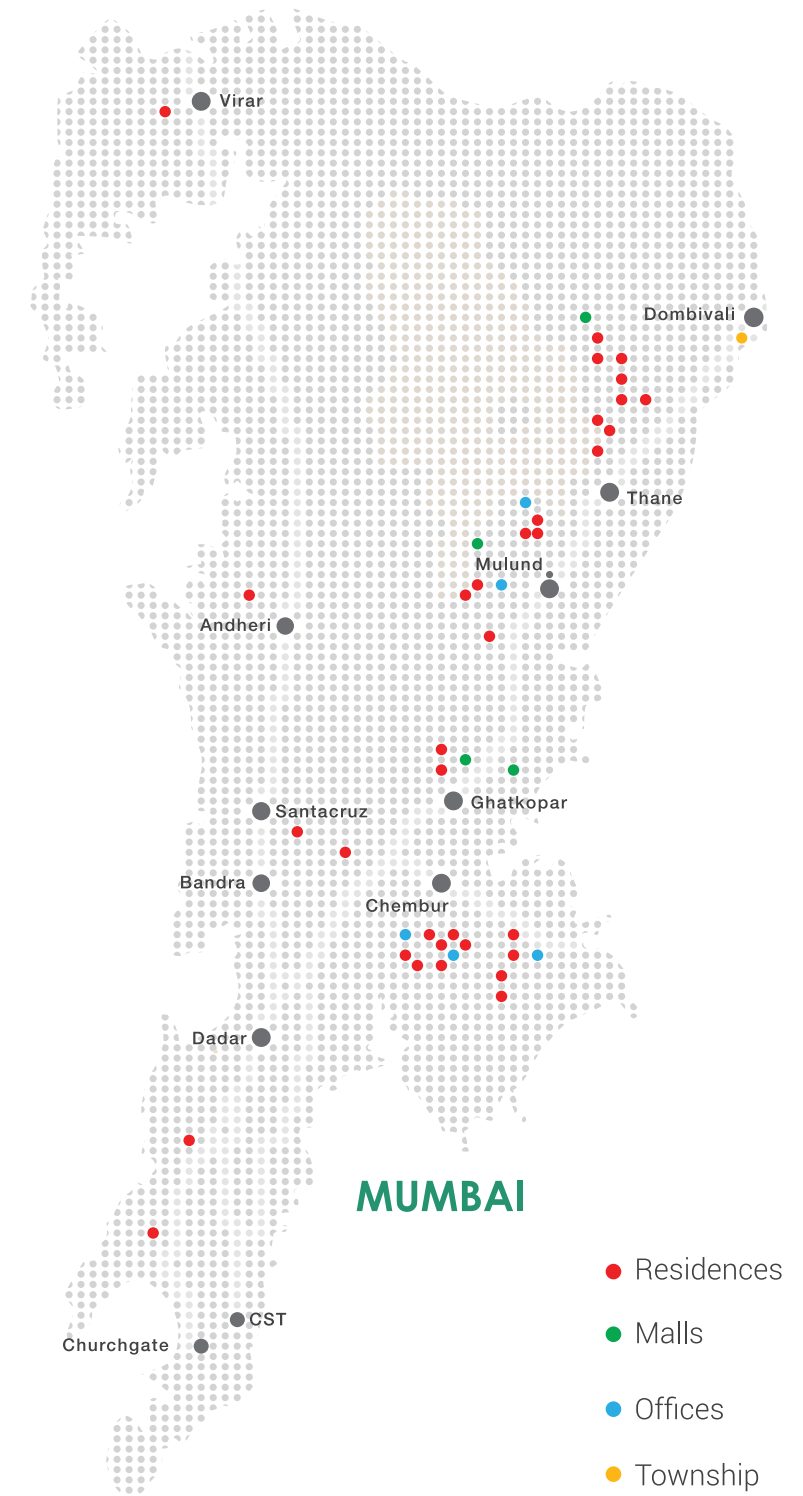
- R Square
- R City Offices

MALLS

- R City Mall, Ghatkopar
- R Mall, Mulund (W)
- R Mall, Thane
- R Odeon, Ghatkopar (E)

TOWNSHIP

- MyCity, Dombivli



MUMBAI

- Residences
- Malls
- Offices
- Township



A PROJECT BY **RUNWAL DEVELOPERS**

 **022 62810362**  **elina@runwal.com**  **www.runwal.com**

Site Address: Runwal Elina, Off Andheri-Kurla Road, Near Holiday Inn, Sakinaka,
Andheri East, Mumbai 400 072.

The images and other details herein are only indicative. The Developer / Owner reserves the right to change any or all of these in the interest of the development, as per provision of law. Artist's impressions are used to illustrate amenities, specifications, images and other details. Tolerance of +/- 3% is possible in the unit areas on account of design and construction variances. All brands stated are subject to final decision of the project architect. This electronic / printed material does not constitute an offer and/or contract of any type between the Developer / Owner and the recipient. No booking or allotment shall be deemed to have been made on the basis of this electronic / printed material. Any Purchaser / Lessee of this development shall be governed by the terms and conditions of the agreement for sale / lease entered into between the parties, and no details mentioned in this electronic / printed material shall in any way govern such transactions unless as may be otherwise expressly provided in the agreement for sale/lease by the Developer / Owner. The Developer / Owner does not warrant or assume any liability or responsibility for the accuracy or completeness of any information contained herein. Project presently financed by Aditya Birla Finance Ltd. and NOC / permission of Aditya Birla Finance Ltd. will be obtained for sale of property, if required. This electronic / printed material has been created keeping in mind the provisions of the Real Estate (Regulation and Development) Act, 2016 (RERA) applicable for projects in Maharashtra. You are required to verify all the details, including area, amenities, services, terms of sales and payments and other relevant terms independently with the Developer sales team only, by physically visiting the project site and the authorised website of RERA. You are requested NOT to visit any unauthorized or unverified website/broker (online / offline) to receive any information about any projects of the Developer and/or its sister concerns.