

Your isle of
magnificence



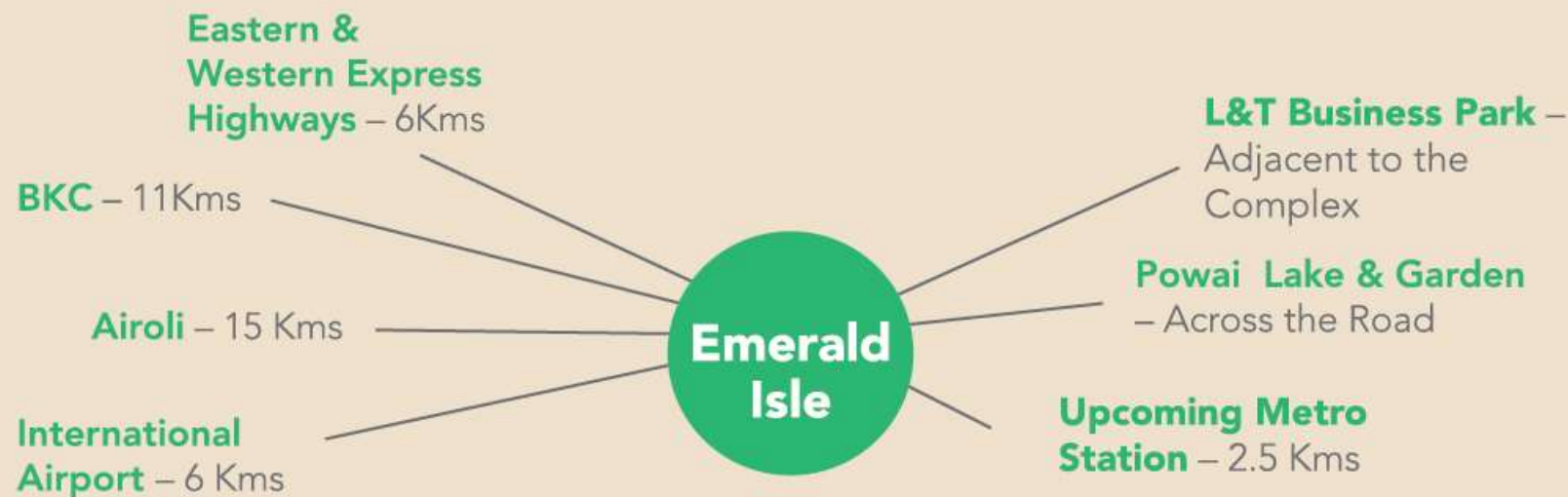
Marvel of Design



Emerald Isle is a cluster of eight magnificent towers rising above an elevated podium spread over 10 acres. Cutting-edge design, breadth of amenities, spaciouly designed interiors and natural green views blend together in this project to create a living experience that's magnificent and bountiful.

Advantage Powai

Powai is a teeming and bustling area of Mumbai that offers all the comforts of contemporary living and yet is pristinely green. Surrounded by a large lake, hillocks and green expanse, Powai is home to some of the finest residential developments as well commercial centers. With its many advantages like connectivity, modern retail options in proximity, schools and other amenities, Powai has evolved as the location of choice and also has appreciated significantly in terms of investment potential.



Convenient, Connected & Promising



Features:

- Eight Residential Towers of 2, 2.5, 3 and 4 BHK homes
- Elevated, no-traffic podium
- Entrance lobby with visitor lounge area
- High-speed elevators

Recreation Area:

- Tennis Court
- Cricket bowling machine with net
- Skating rink
- Yoga & meditation centre
- Multi-purpose hall
- Reading lounge
- Golf simulator
- Natural accupressure therapy area
- Kid's play area (for different age group of children; including sand pit.)

Clubhouse:

- Swimming Pool
- Fully-equipped Gymnasium
- Sauna, Spa & Jacuzzi
- Squash & Badminton courts
- Indoor games room for table tennis, snooker & carom

Fixtures & Finishes:

- Air-conditioned homes with split ACs in living areas & bedrooms
- Motion sensors* for automated lighting in passages and bathrooms
- Modular kitchen*
- Marble flooring in living, dining and bedrooms
- Video Door phone

* only in tower T1

4

Reasons to invest in Emerald Isle

1

Location Advantage

Powai is few minutes drive to both Western and Eastern highways, international airport and BKC. With metro station, gardens, restaurants, hotels, retail areas, etc within walking distance, it's amazingly convenient.

2

Appreciation Potential

Powai is fast appreciating in terms of real estate rates. With the trusted name of L&T, and all the features & amenities, the project is slated to appreciate considerably.

3

Amenities & Features

Rich with sports, recreation and other amenities, podium level jogging areas, etc, the project offers a complete living experience.

4

Assurance

With the trust and assurance of L&T behind this project you can be rest assured about promises being delivered.

VIEW FROM THE APARTMENTS

Lake side view from Signature tower (T1)



West side view



lake side view



SITE LAYOUT PLAN



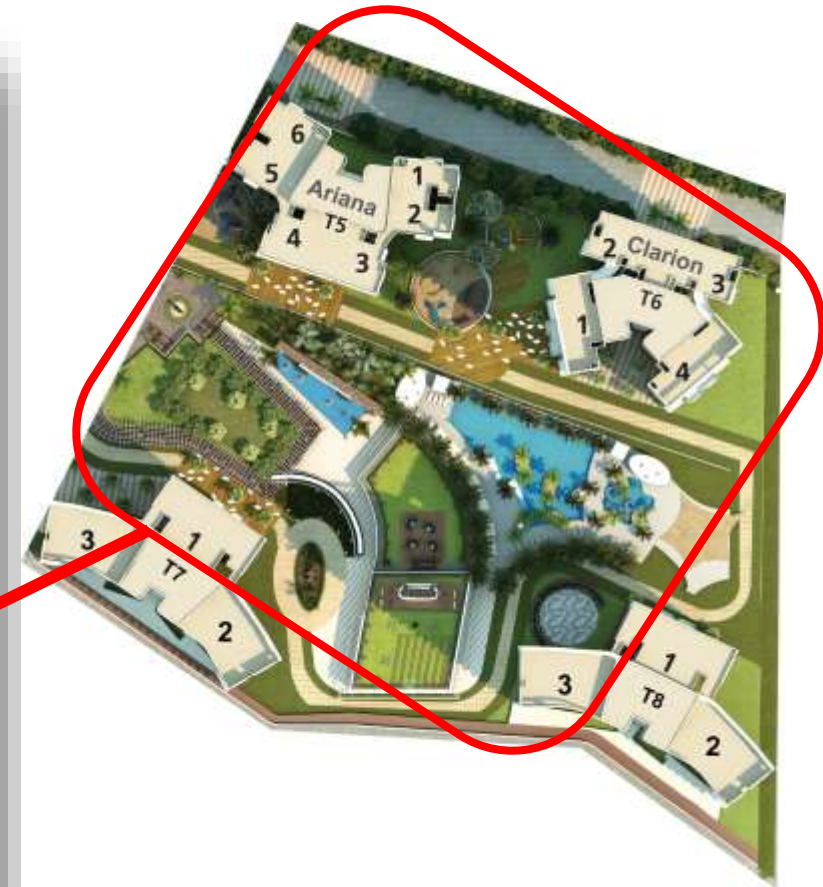
VIEW FROM SIGNATURE TOWER (T1)



VIEW FROM (T5) ARIANA, (T6) CLARION & (T7)

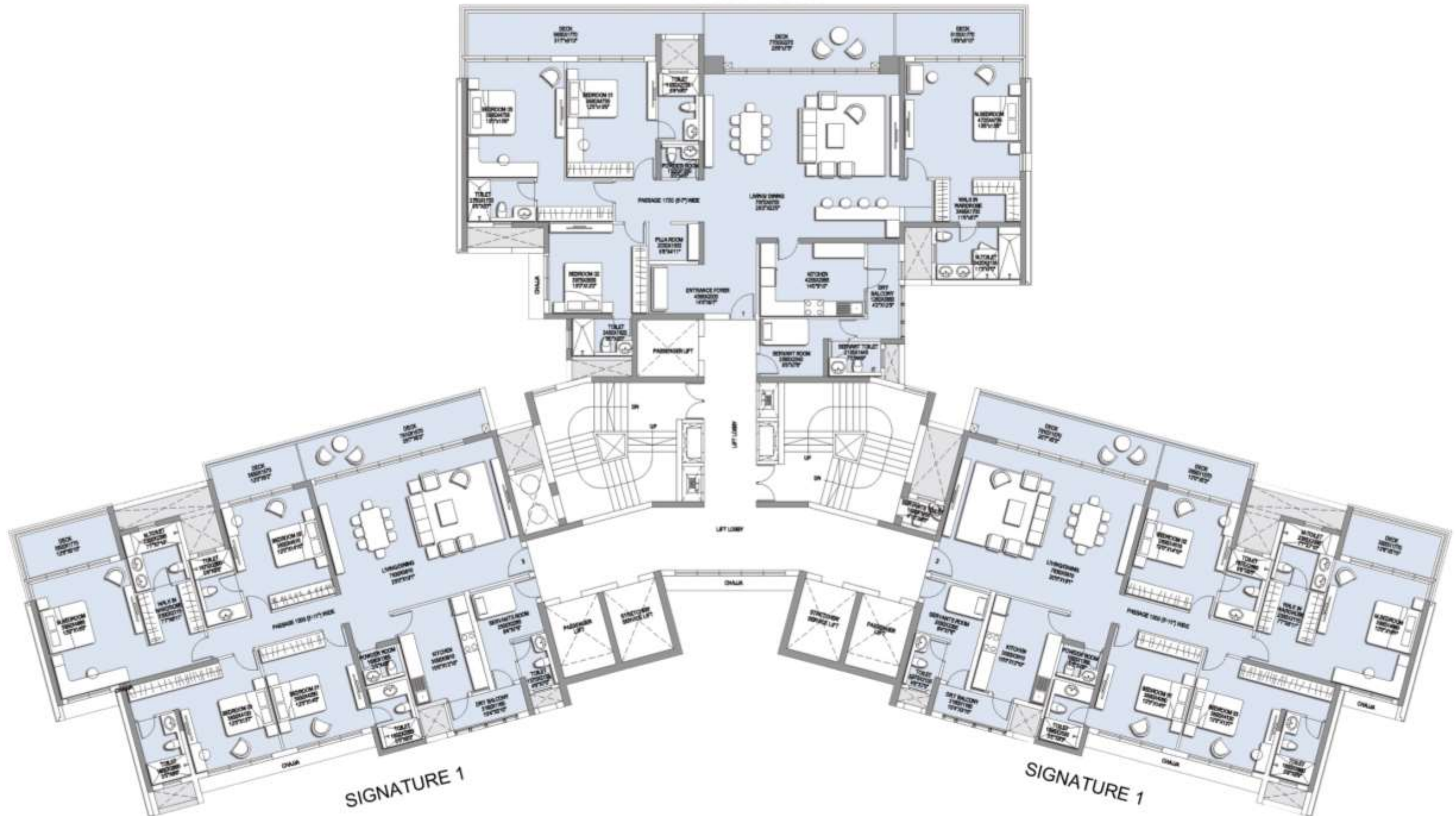


Garden facing towers



(T1) SIGNATURE TOWER TYPICAL FLOOR PLAN

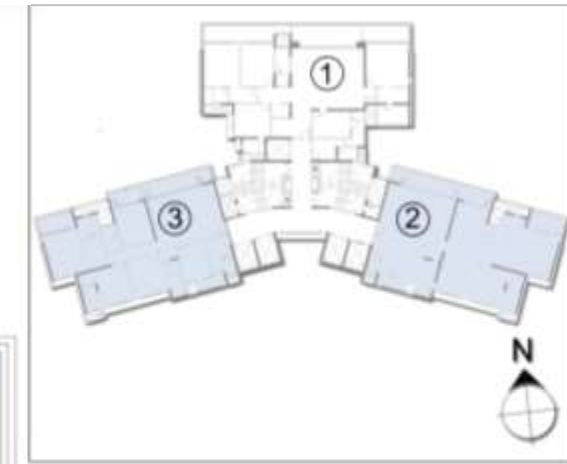
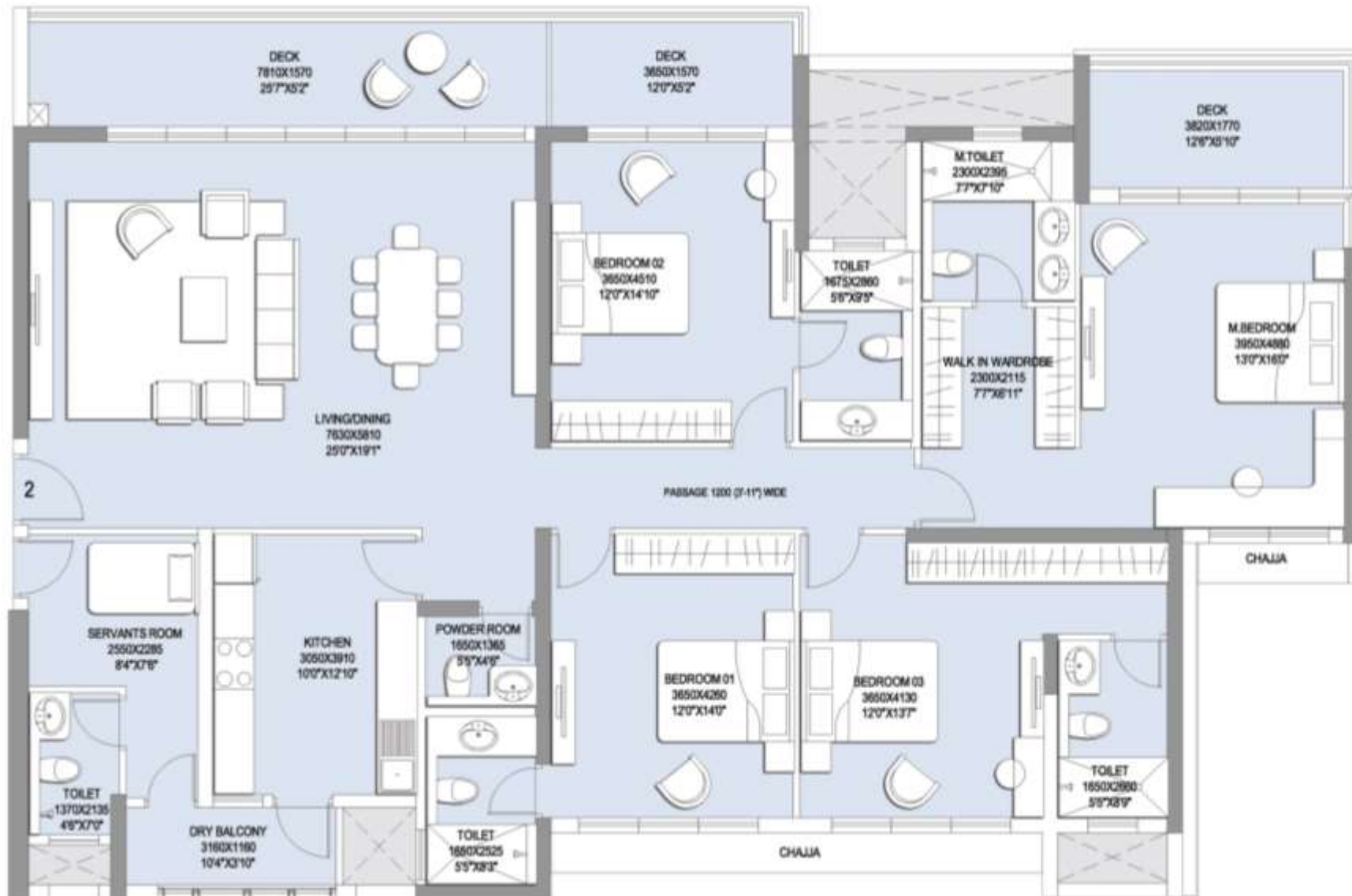
SIGNATURE 2



Exclusive three apartments of 4BHK per floor | Breathtaking views of Powai Lake |
Apartments open from three sides

(T1) "SIGNATURE-I" UNIT PLAN – 4 BHK (3400)

Carpet Area – 2190.9 Sq.ft.

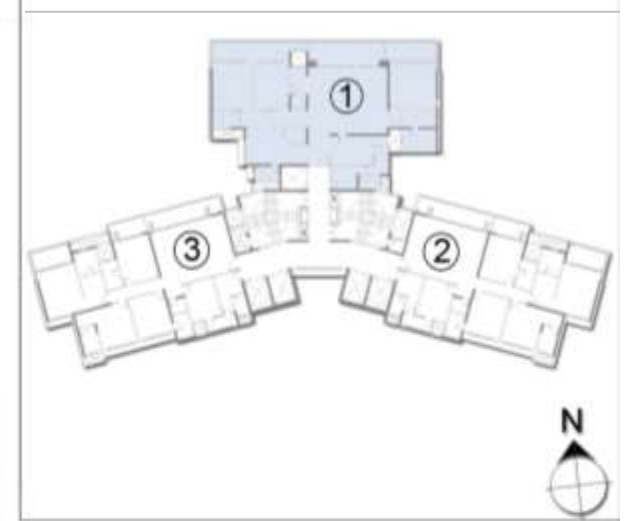
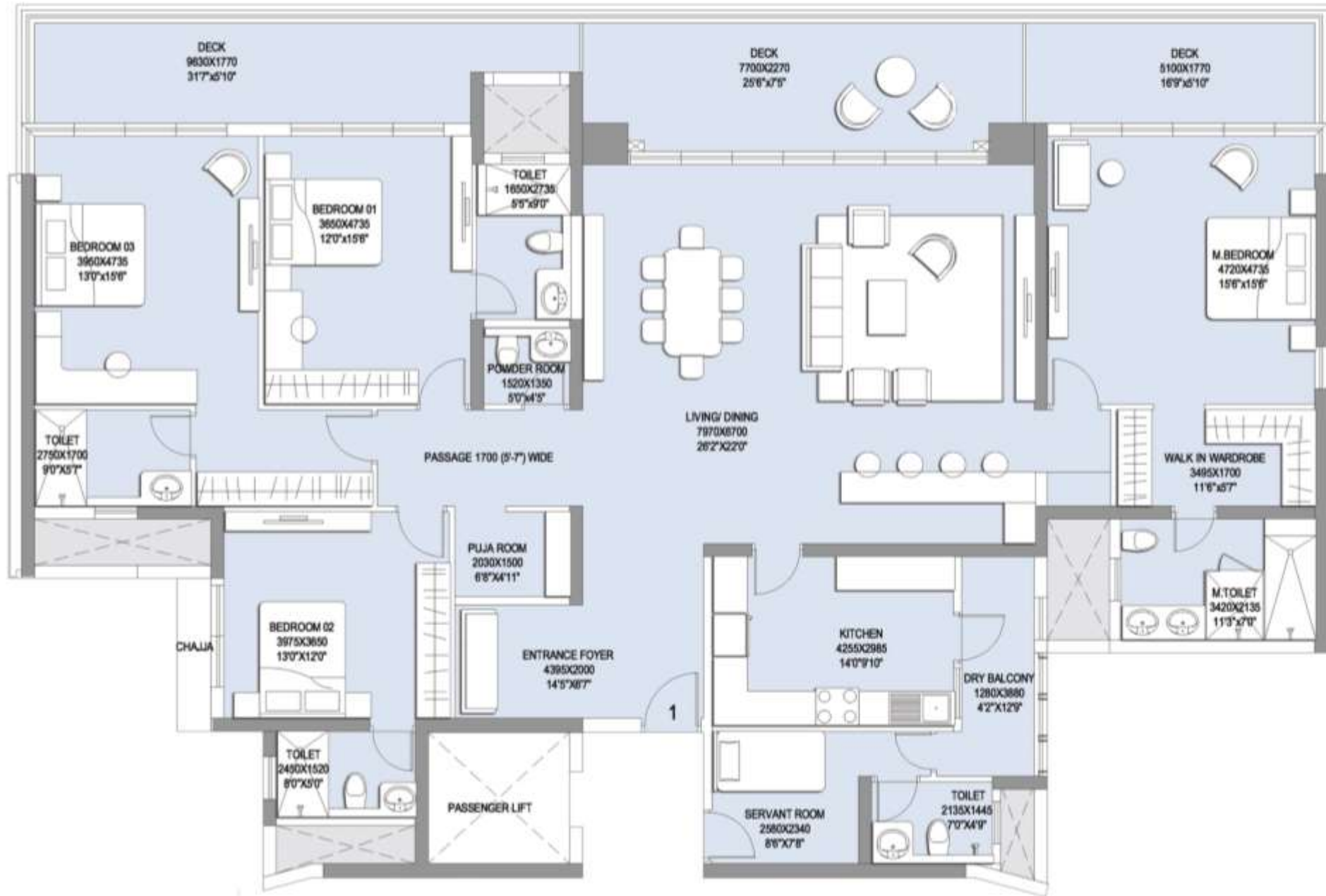


KEY PLAN - T1

Lake facing apartment | Imported marble flooring | Split air conditioners | Luxurious master bedroom with walk-in wardrobe
| Separate entry for servant room | Powder room for guests

(T1) "SIGNATURE-II" UNIT PLAN – 4 BHK (4235)

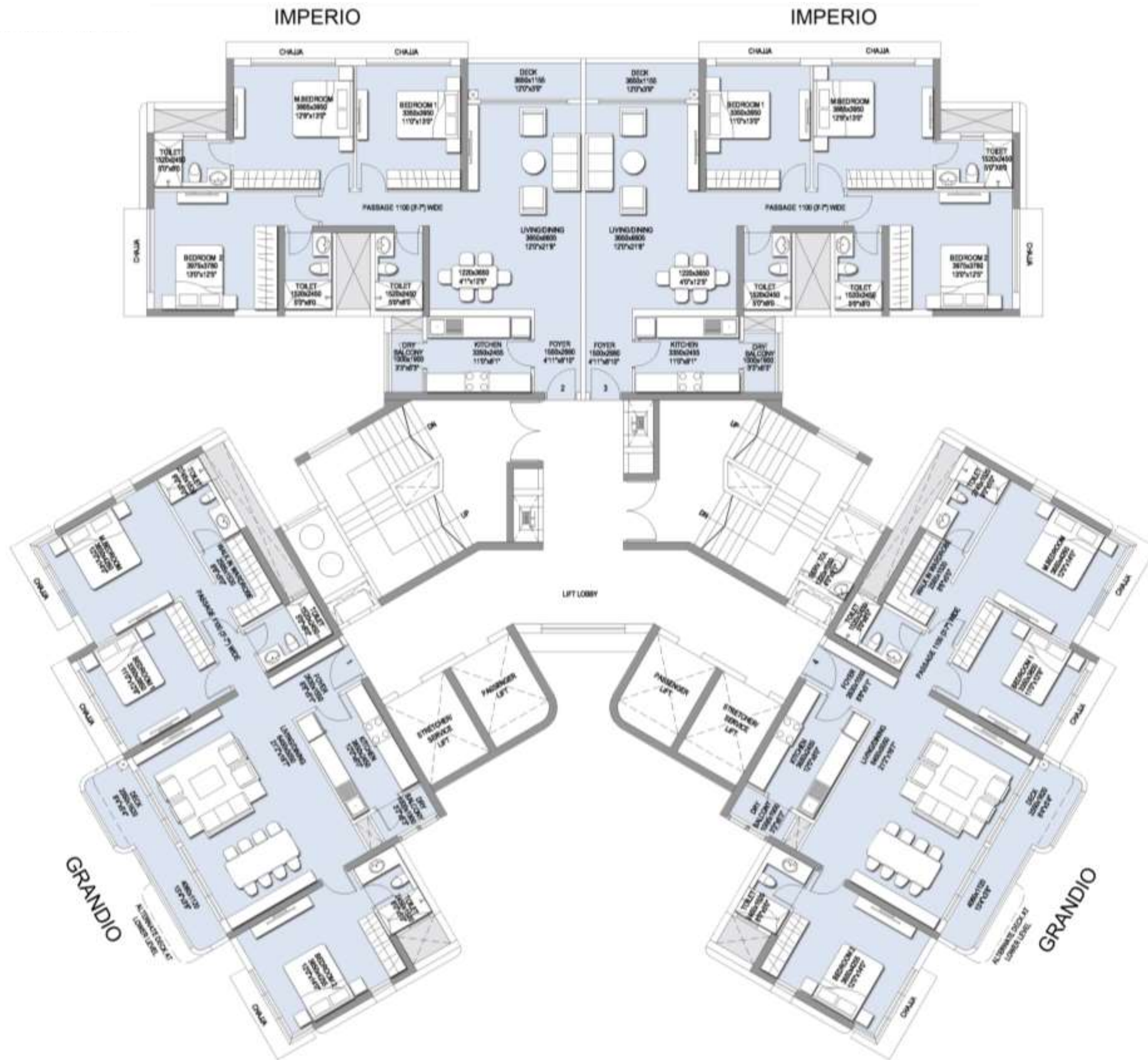
Carpet Area – 2729.64 Sq.ft.



KEY PLAN - T1

Lake facing apartment | Puja room | Large decks for enhanced viewing experience | Apartment open from three sides | Imported marble flooring | Split air conditioners in living area & bedroom | Luxurious master bedroom with walk-in wardrobe | Separate entry for servant room | Powder room for guests

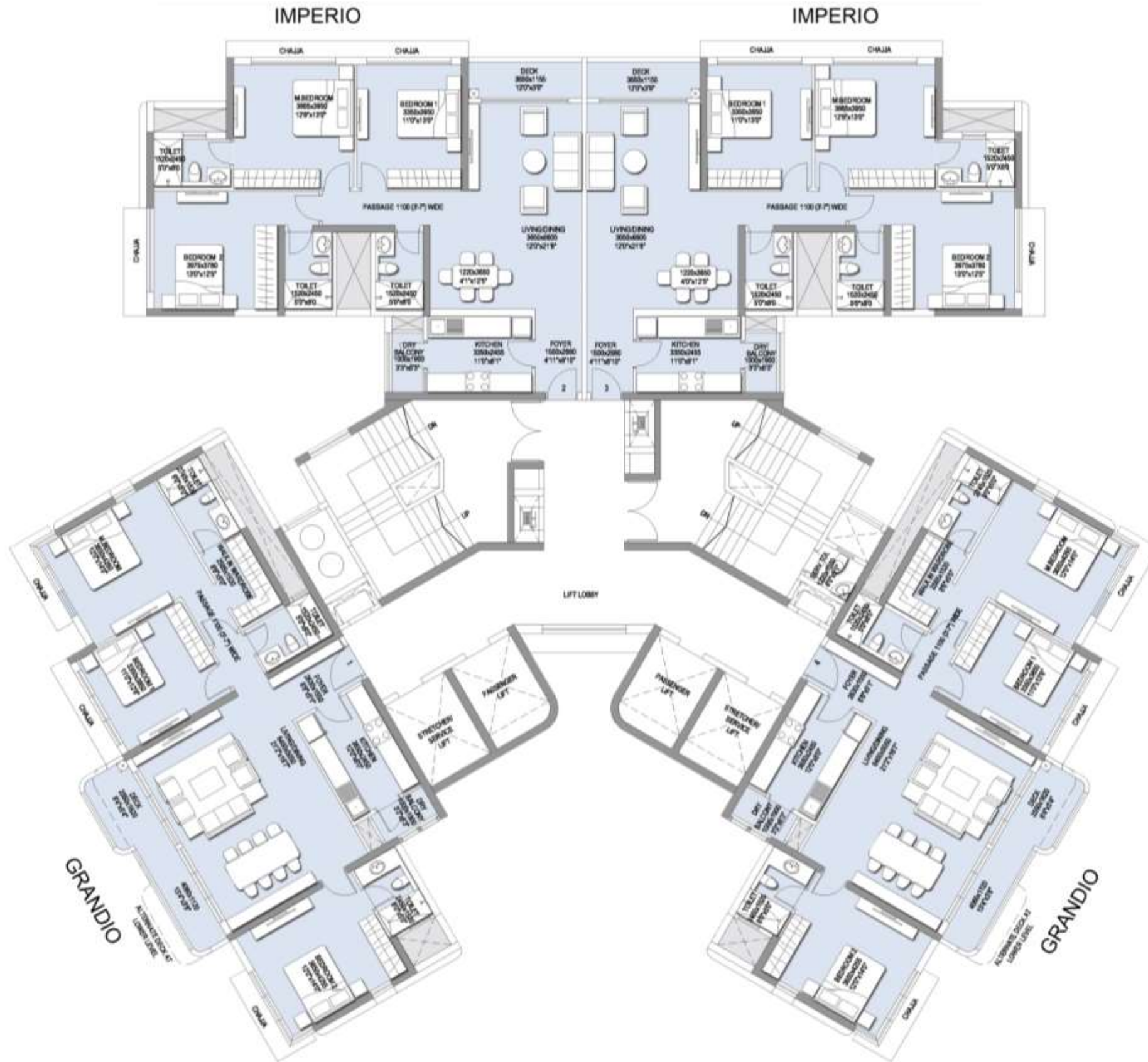
(T2) ASHMORE TOWER TYPICAL FLOOR PLAN



Four apartments of 3BHK per floor



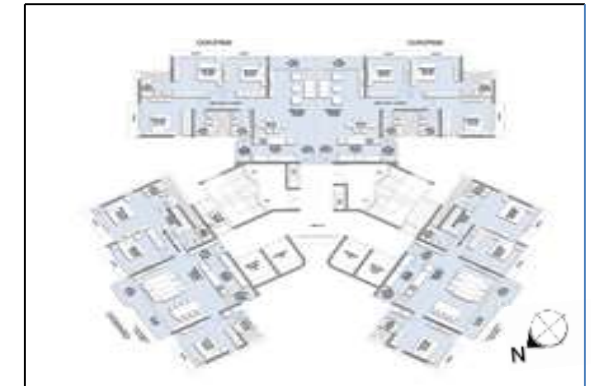
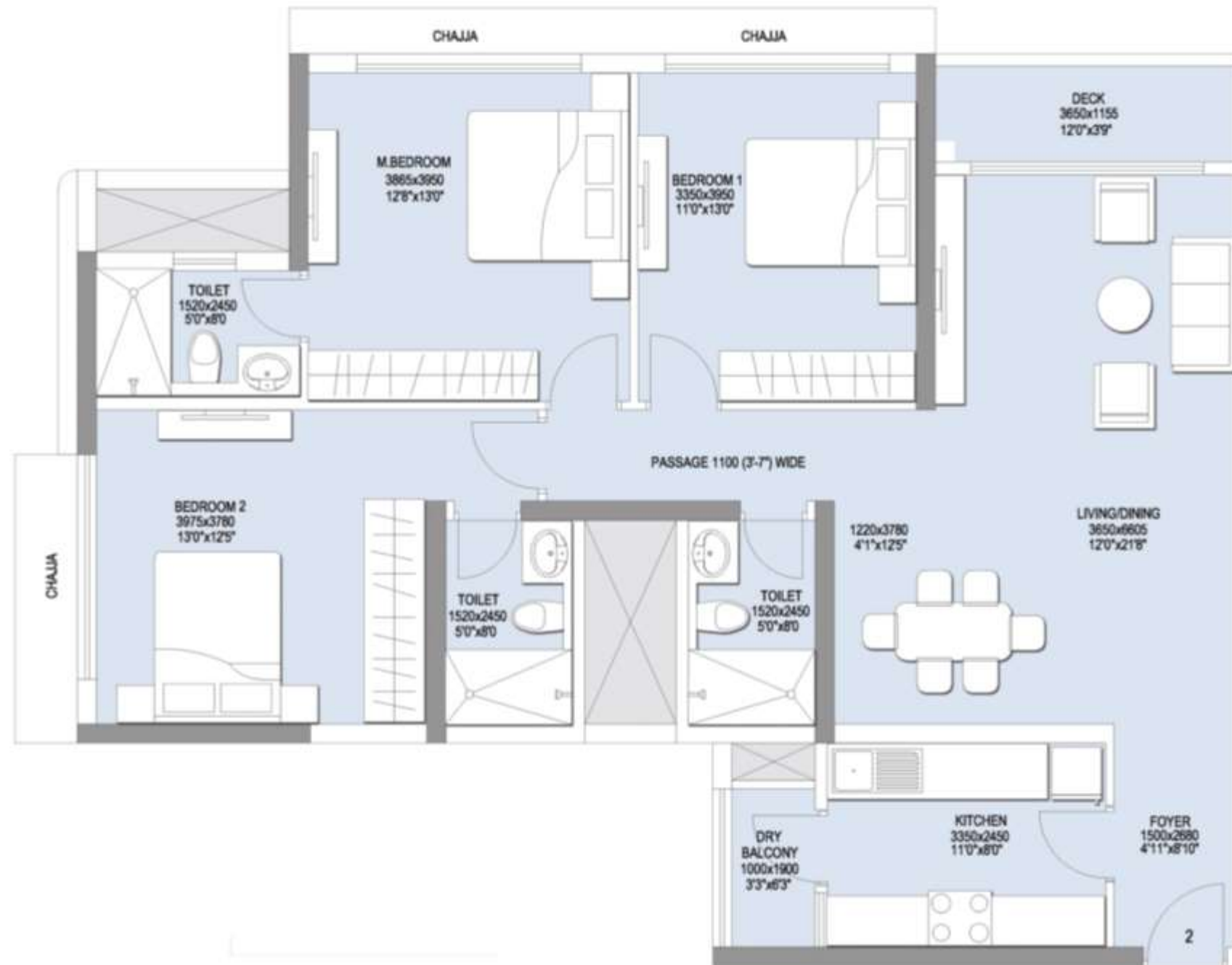
(T6) CLARION TOWER TYPICAL FLOOR PLAN



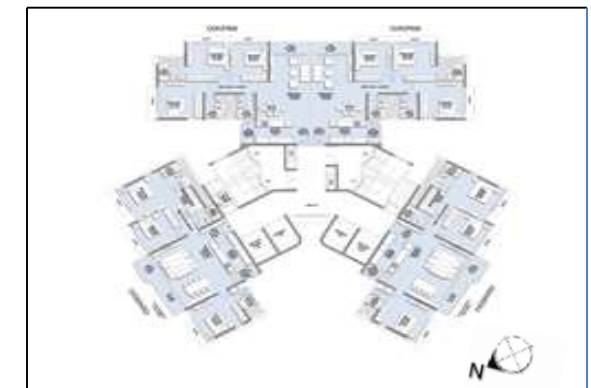
Four apartments of 3BHK per floor

(T2) ASHMORE & (T6) CLARION TOWER “IMPERIO” UNIT PLAN 3BHK (1805)

Carpet Area – 1163.05 Sq.ft.



T2 Key Plan

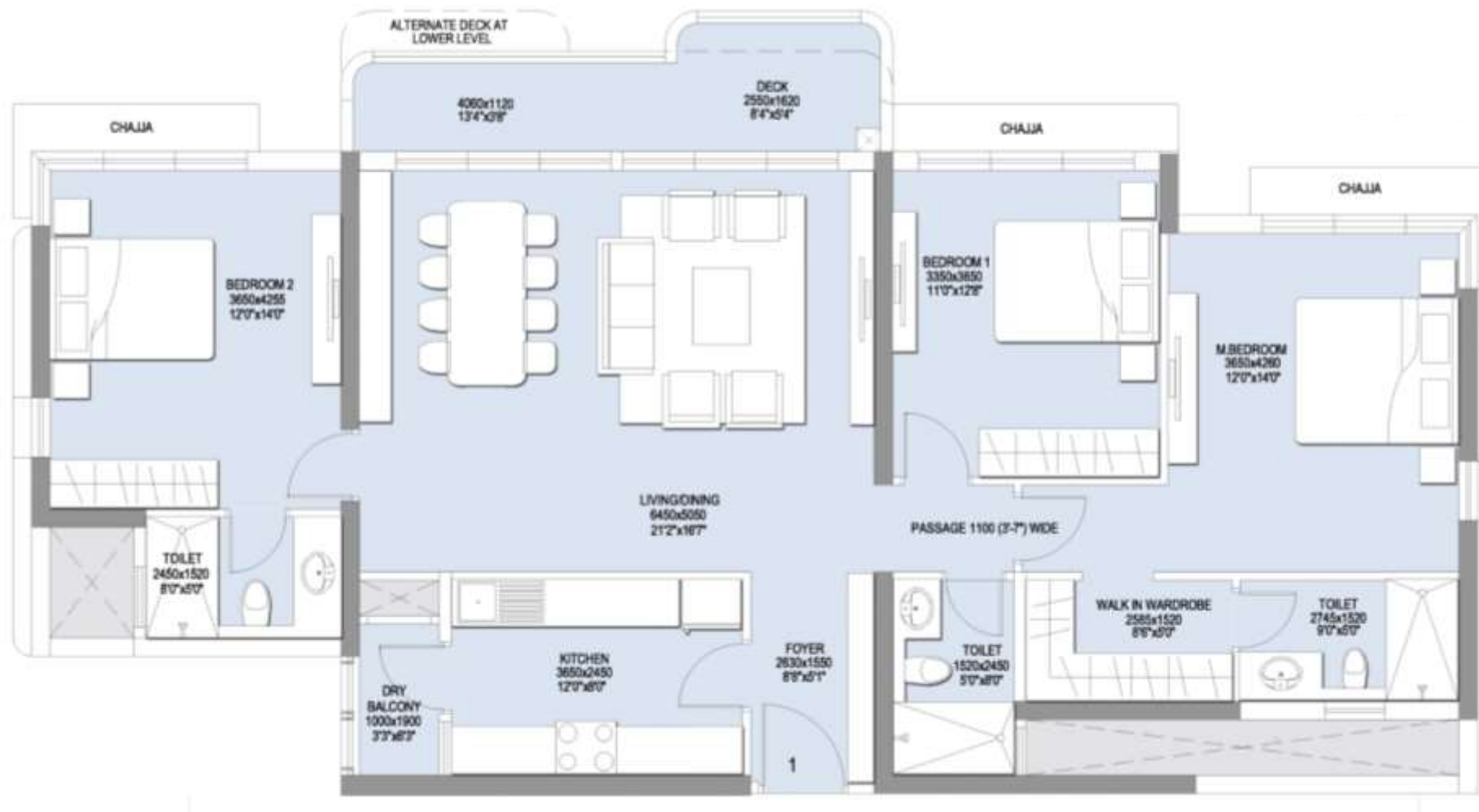


T6 Key Plan

Two-sided open apartments for cross ventilation | Imported marble flooring | Split air conditioners in living & all bedrooms | Spacious master bedroom | Separate utility area

(T2) ASHMORE & (T6) CLARION TOWER “GRANDIO” UNIT PLAN 3BHK (2010)

Carpet Area – 1297.17 Sq.ft.



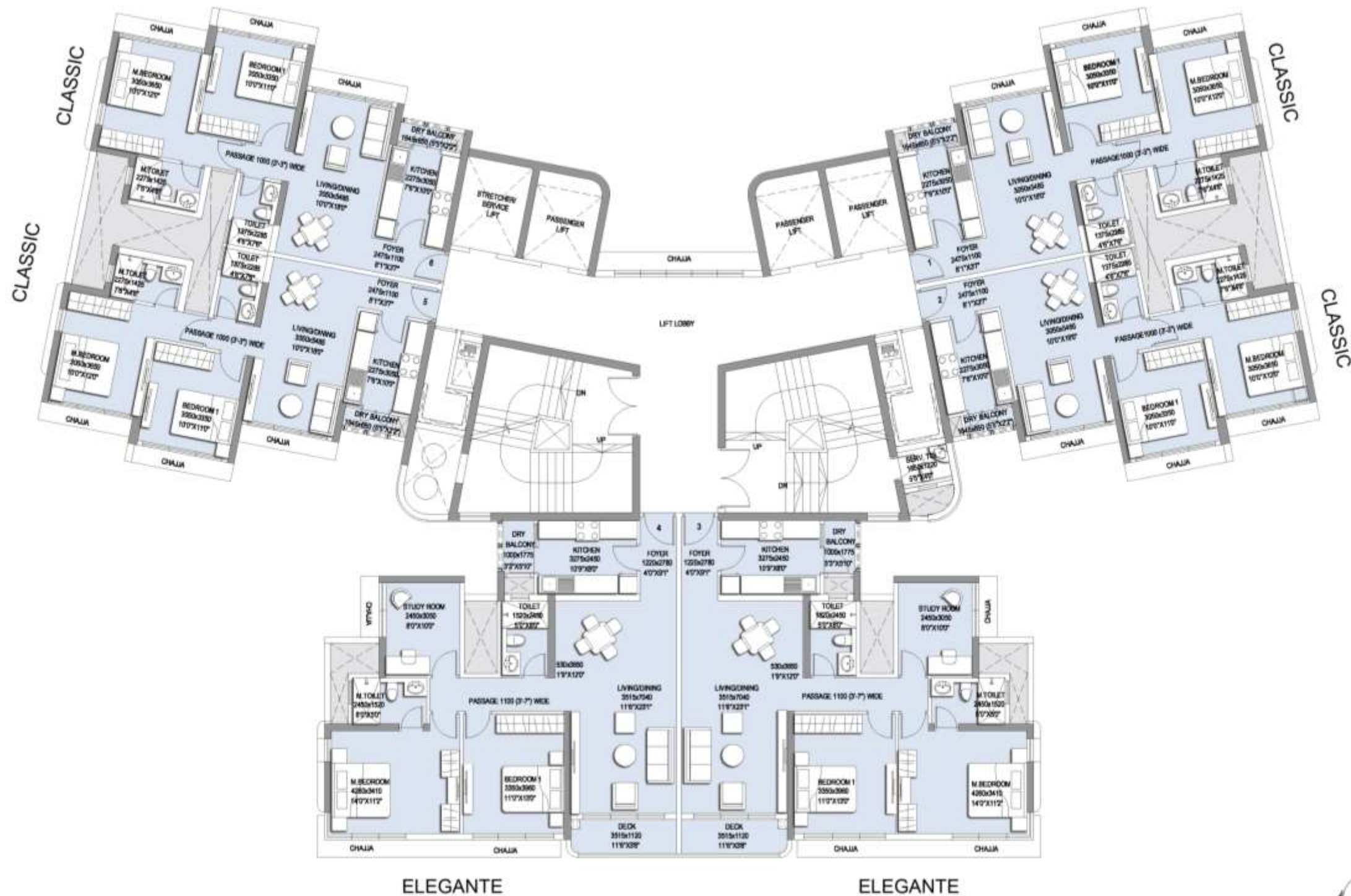
T2 Key Plan



T6 Key Plan

Two-sided open apartments for cross ventilation | Imported marble flooring | Split air conditioners in living & bedroom | Spacious master bedroom with walk-in wardrobes | Separate utility area

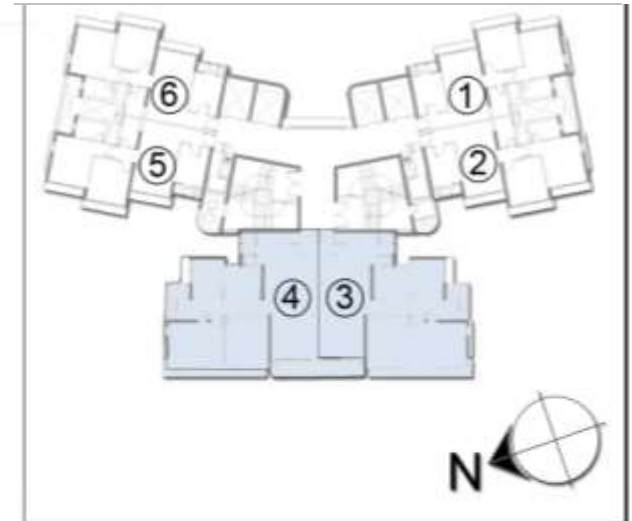
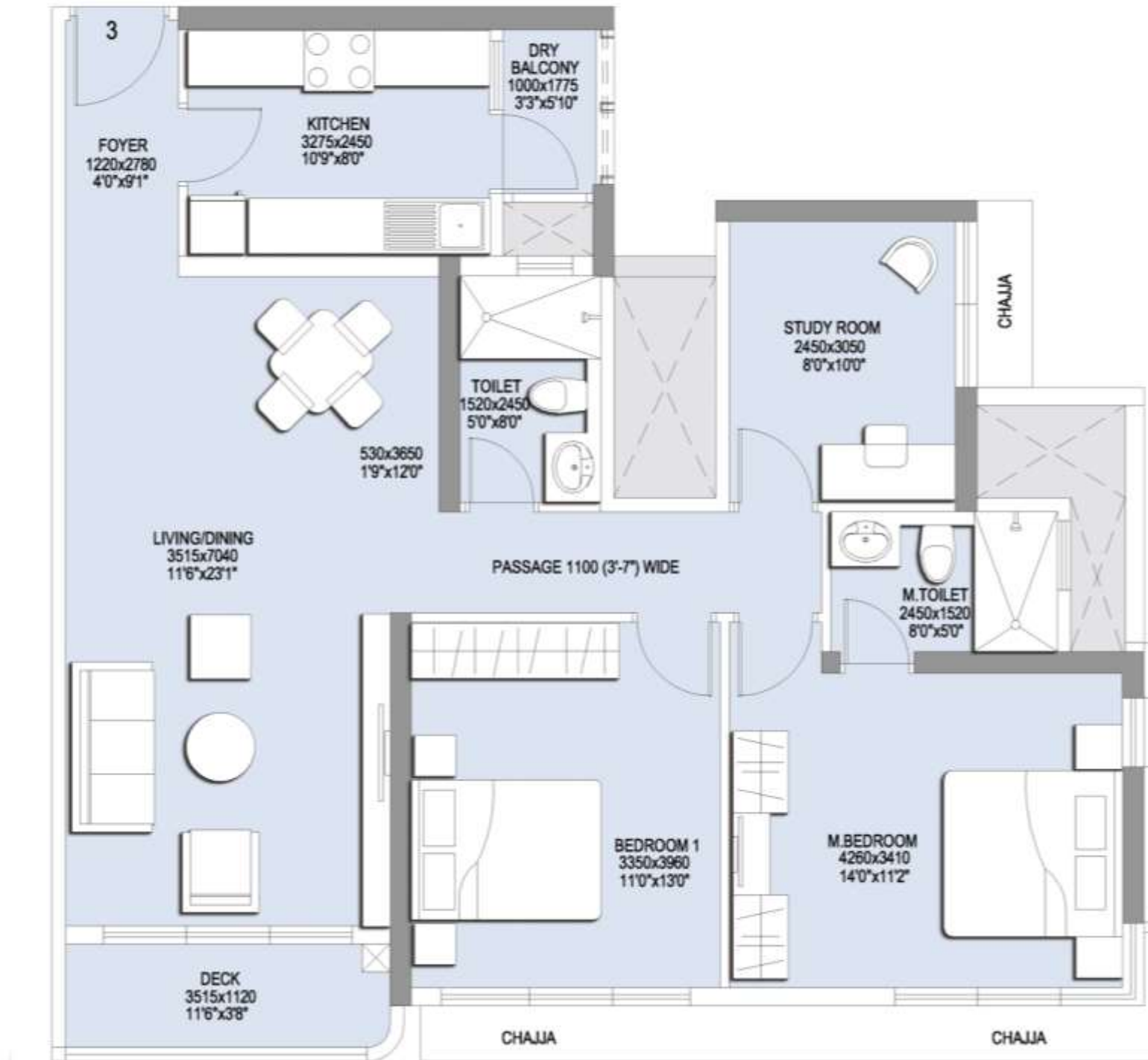
(T3) WINDLEY & (T5) ARIANA TYPICAL FLOOR PLAN



Six apartments per floor | Designed to increase maximum space utilization

(T3) WINDLEY & (T5) ARIANA TOWER “ELEGANTE” UNIT PLAN 2.5BHK (1540)

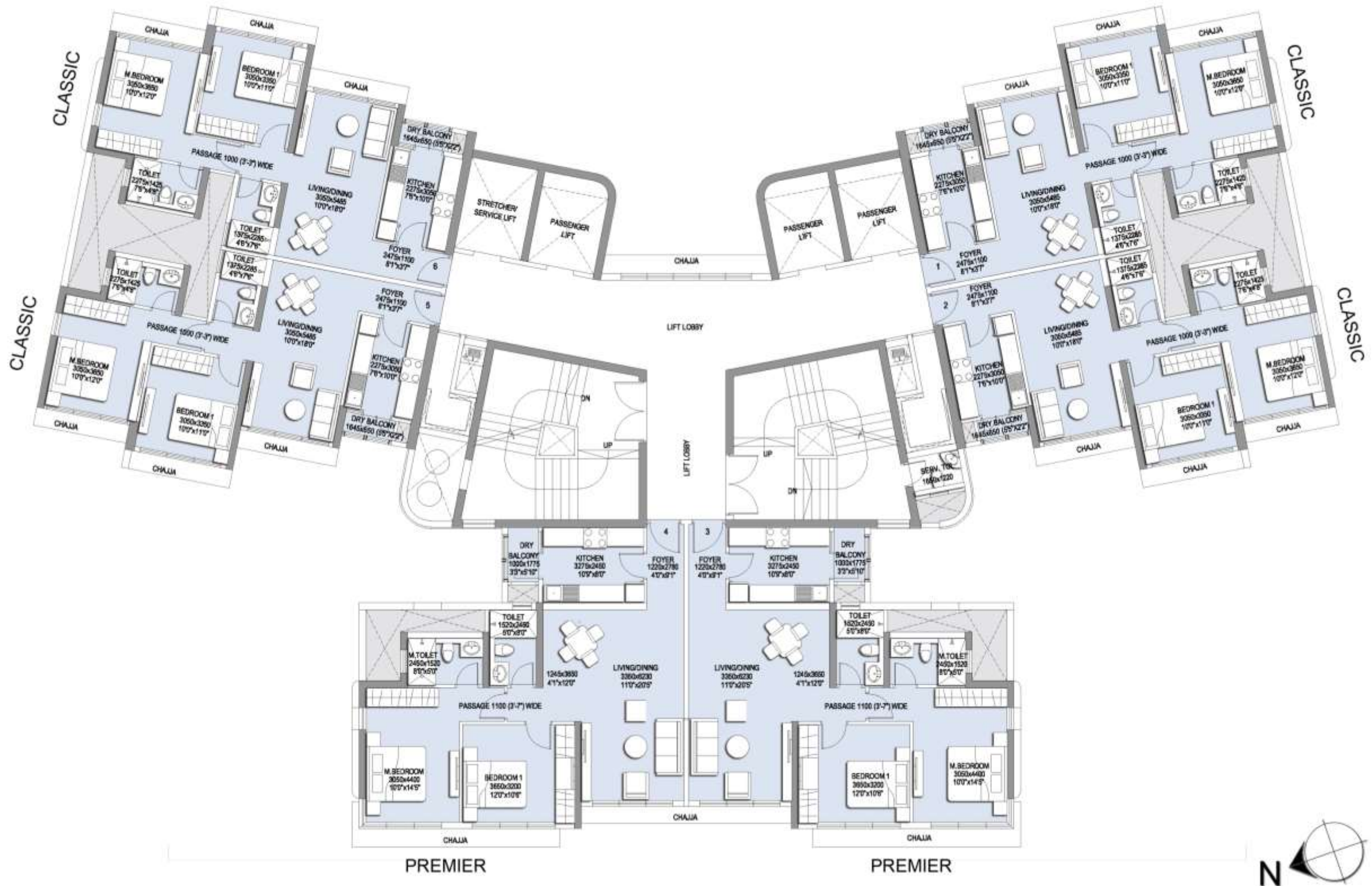
Carpet Area – 993.09 Sq.ft.



T3 & T5 Key Plan

Efficiently designed 2 BHK with an extra room | Imported marble flooring | L shaped window for better view | Spilt air conditioners in living area & bedrooms | Hi-quality fittings for bathrooms

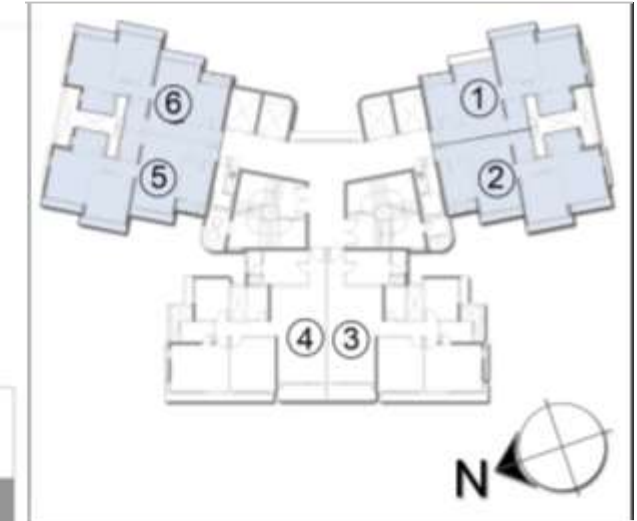
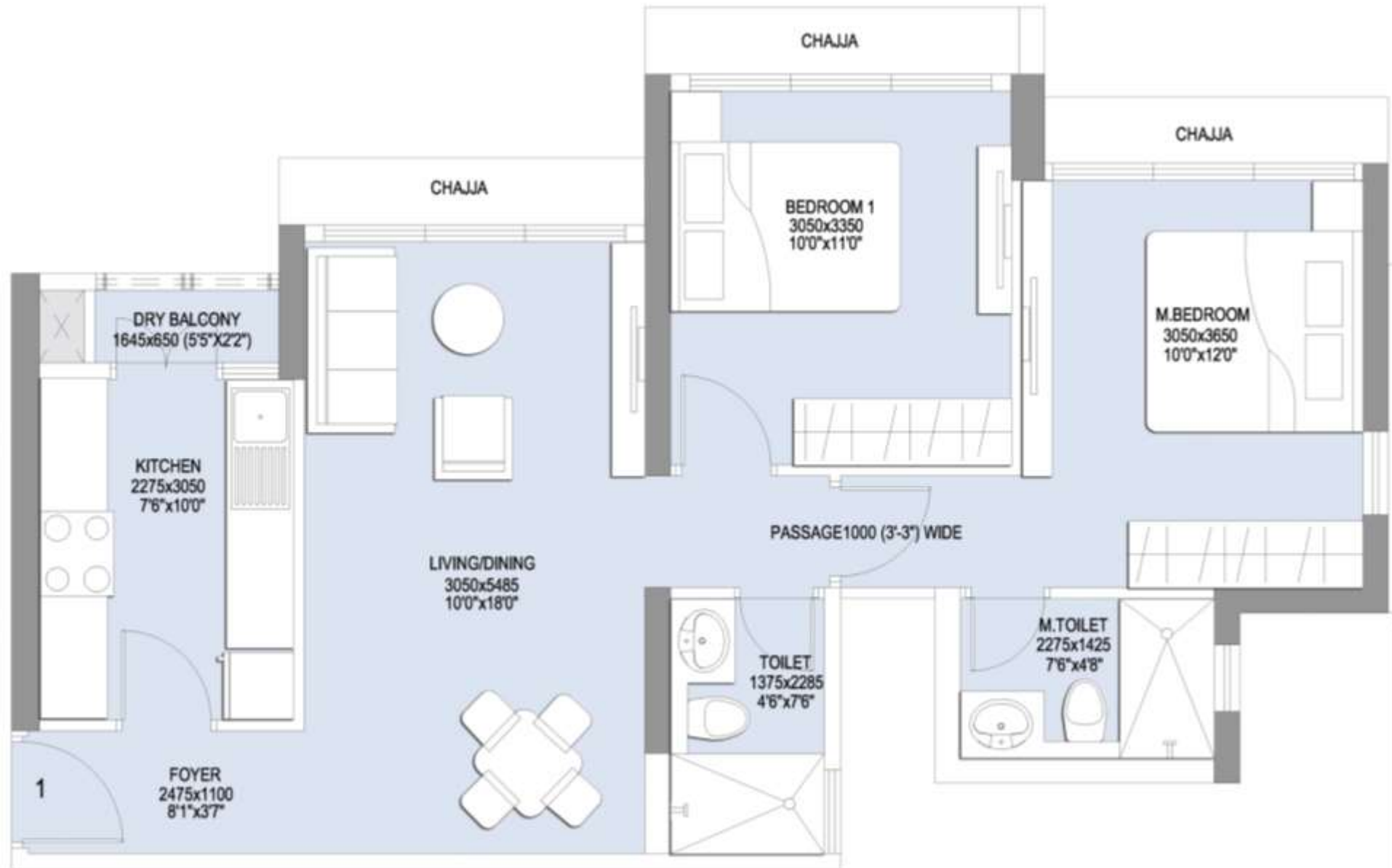
(T4) SANTORINI TOWER TYPICAL FLOOR PLAN



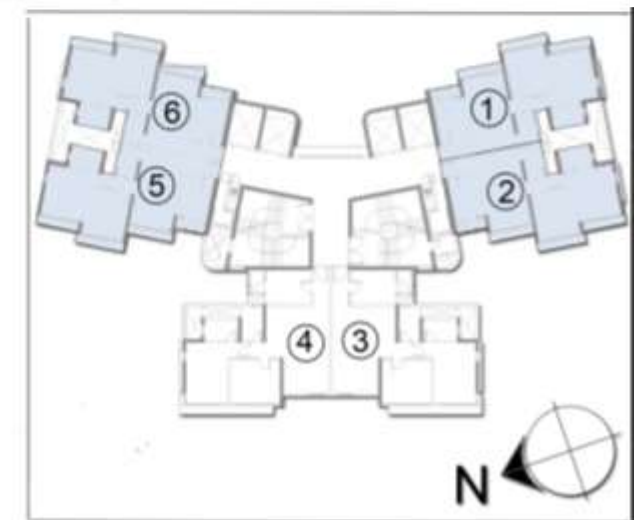
Exclusive 2BHK tower | Six apartments per floor | Four high speed elevators

(T3) WINDLEY, (T4) SANTORINI & (T5) ARIANA TOWER "CLASSIC" UNIT PLAN 2BHK (985)

Carpet Area – 635.51 Sq.ft.



T3 & T5 Key Plan

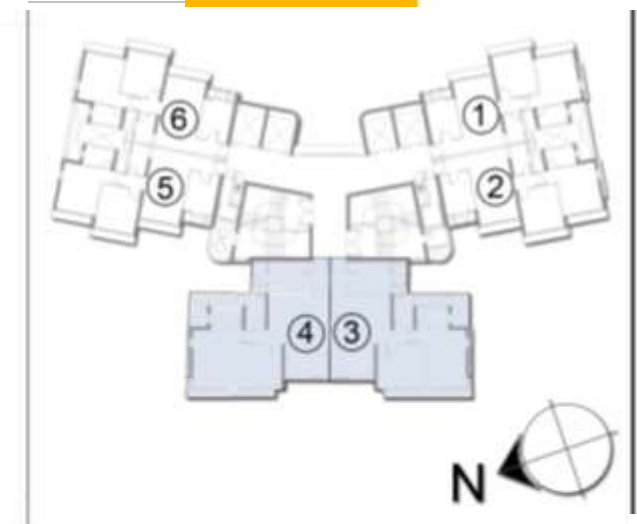
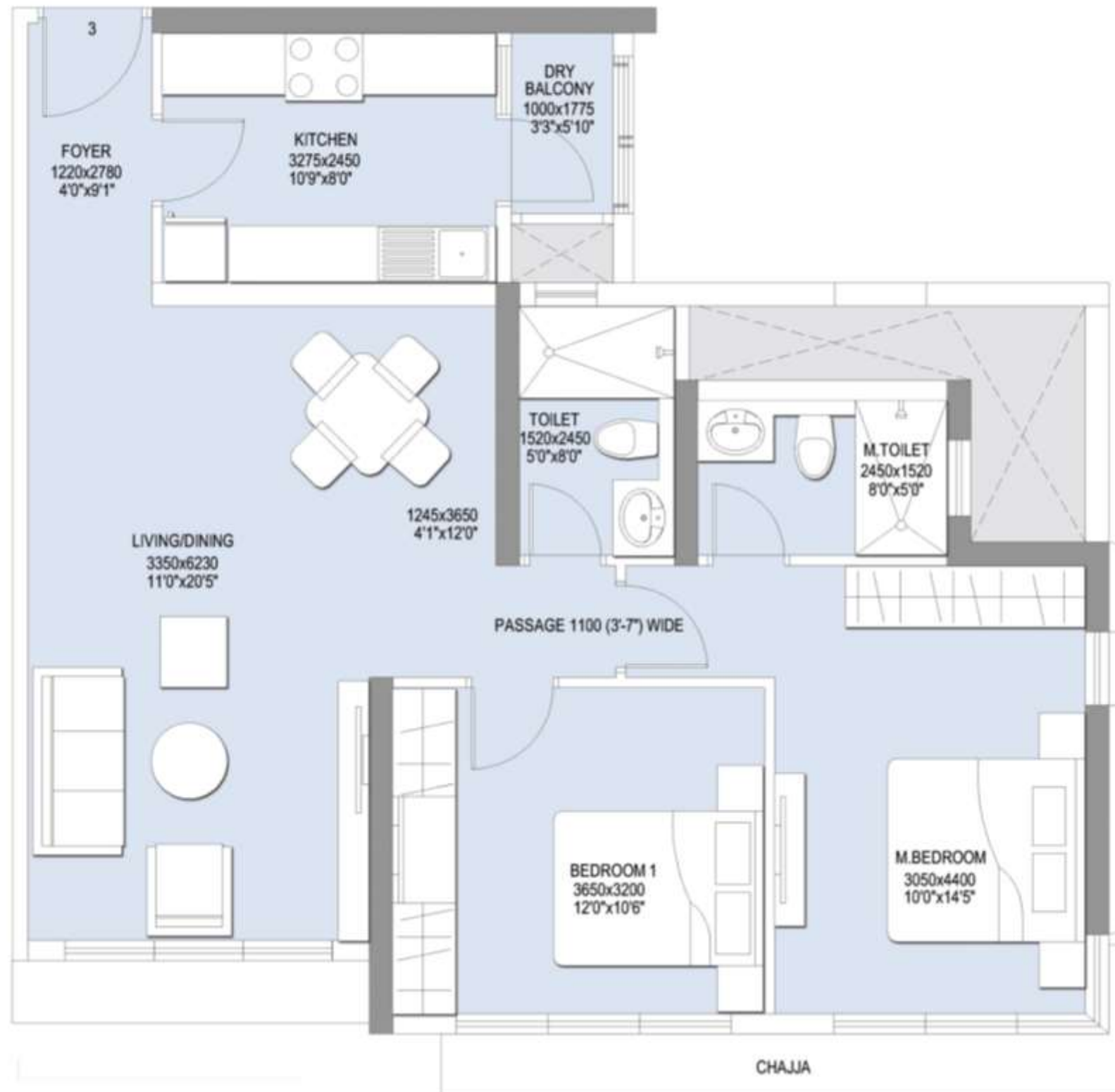


T4 Key Plan

Modern & contemporary design | Imported marble flooring | Split air conditioner in living area & bedrooms | Hi-quality fittings in bathrooms

(T4) SANTORINI TOWER “PREMIER” UNIT PLAN 2BHK (1245)

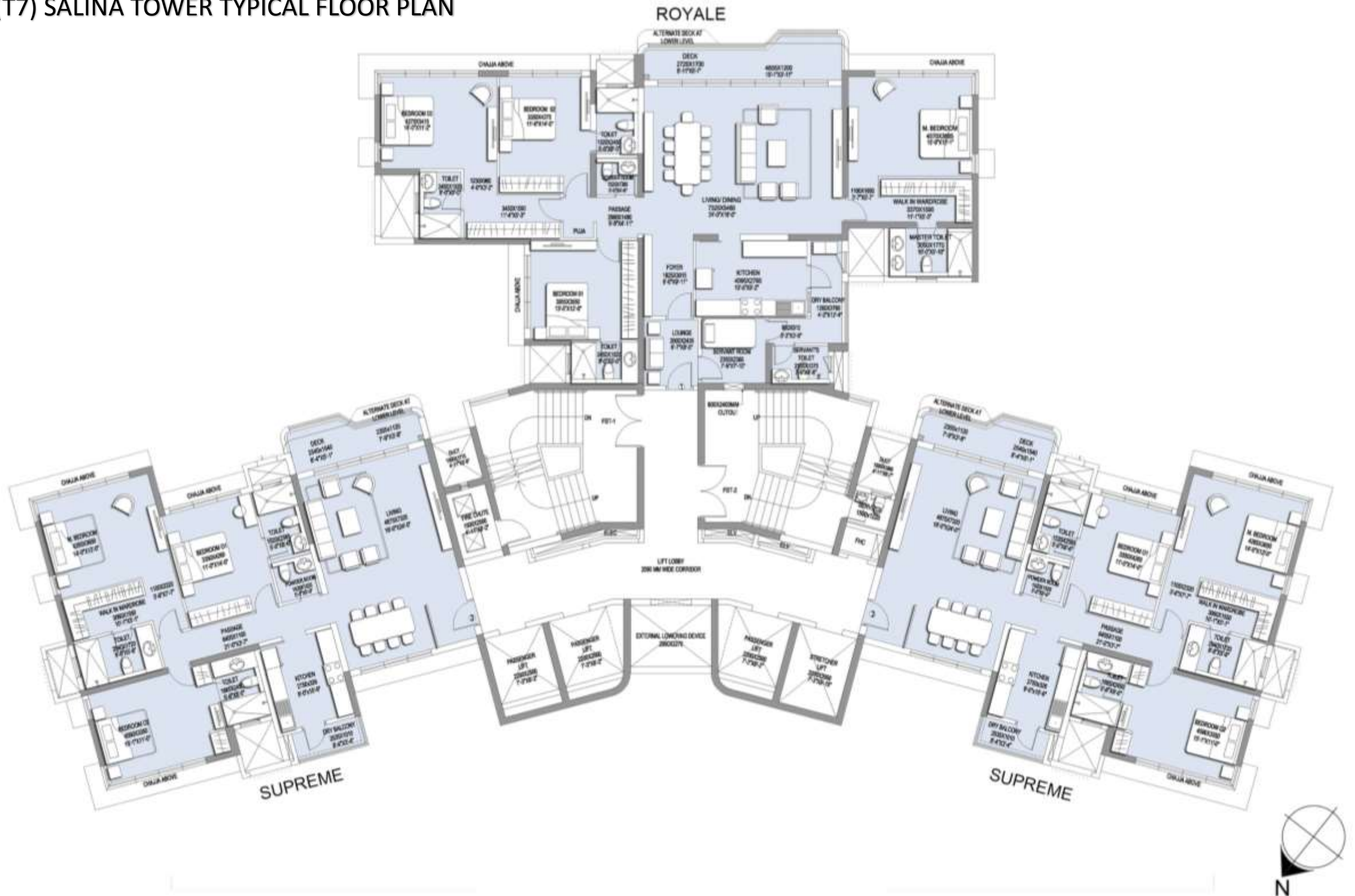
Carpet Area – 803.32 Sq.ft.



KEY PLAN - T4

Garden facing residences | L shaped windows for better view | Split air conditioner in living area & bedrooms |
Hi-quality fittings in bathrooms

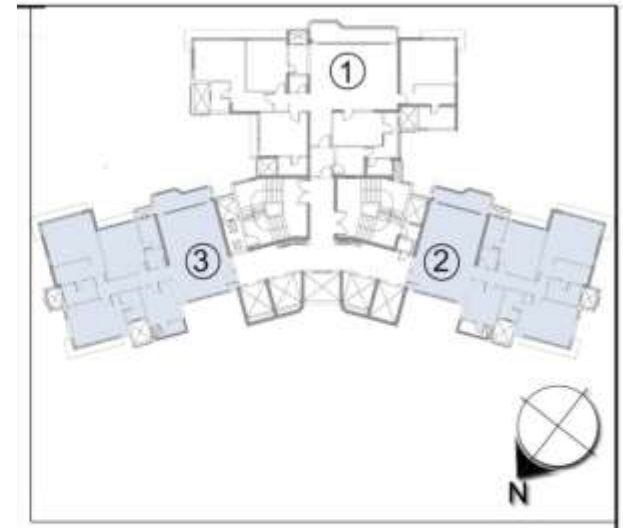
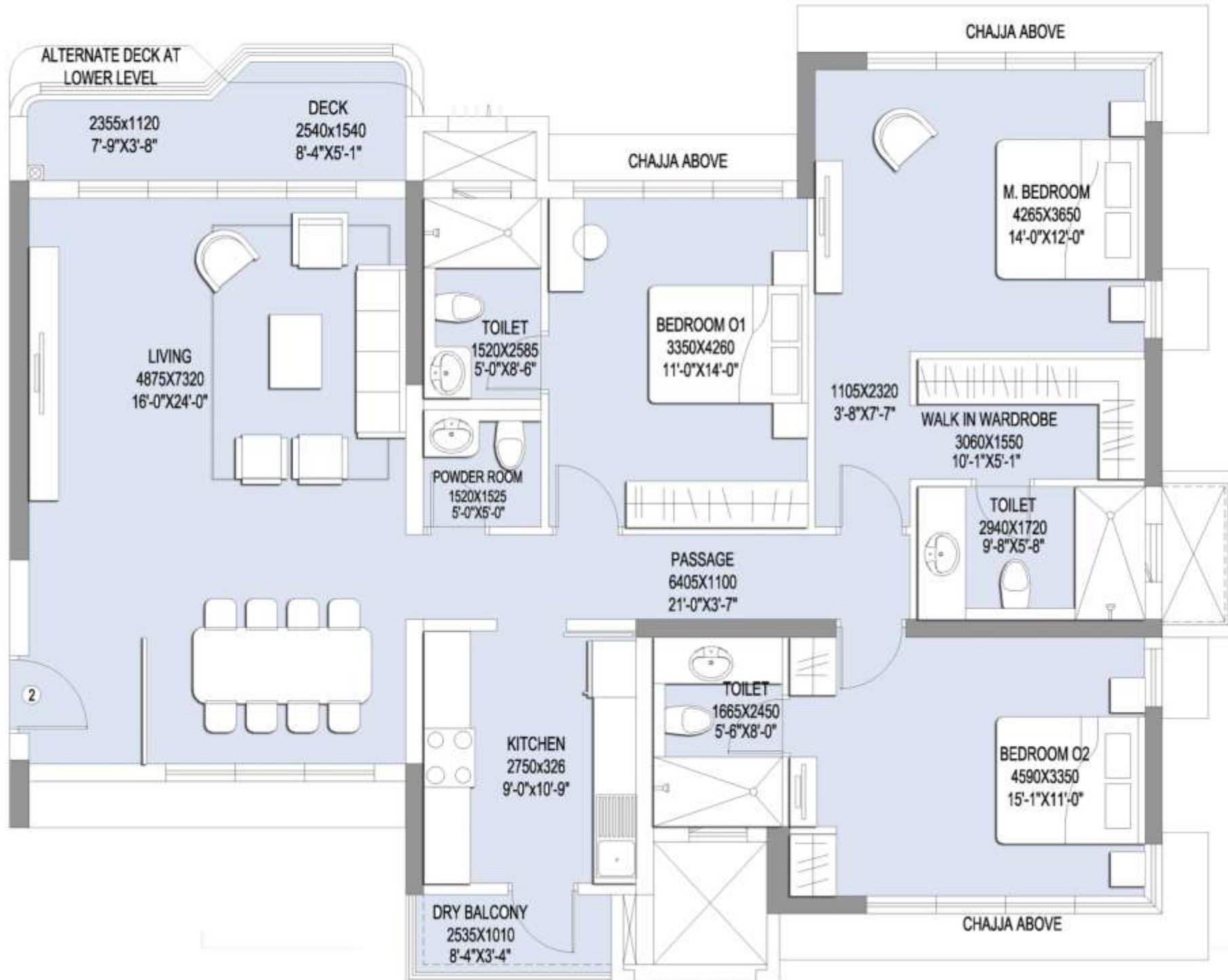
(T7) SALINA TOWER TYPICAL FLOOR PLAN



Three apartments per floor | Internal Podium and Landscaping view from all apartments

T7 TOWER "SUPREME" UNIT PLAN 3BHK (2175)

Carpet Area – 1403.19 Sq.ft.

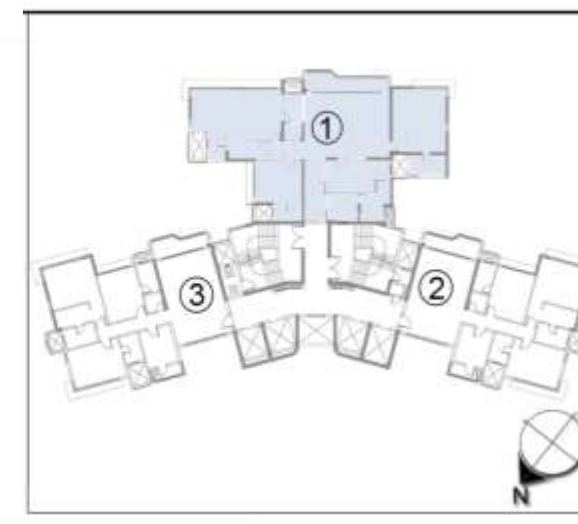
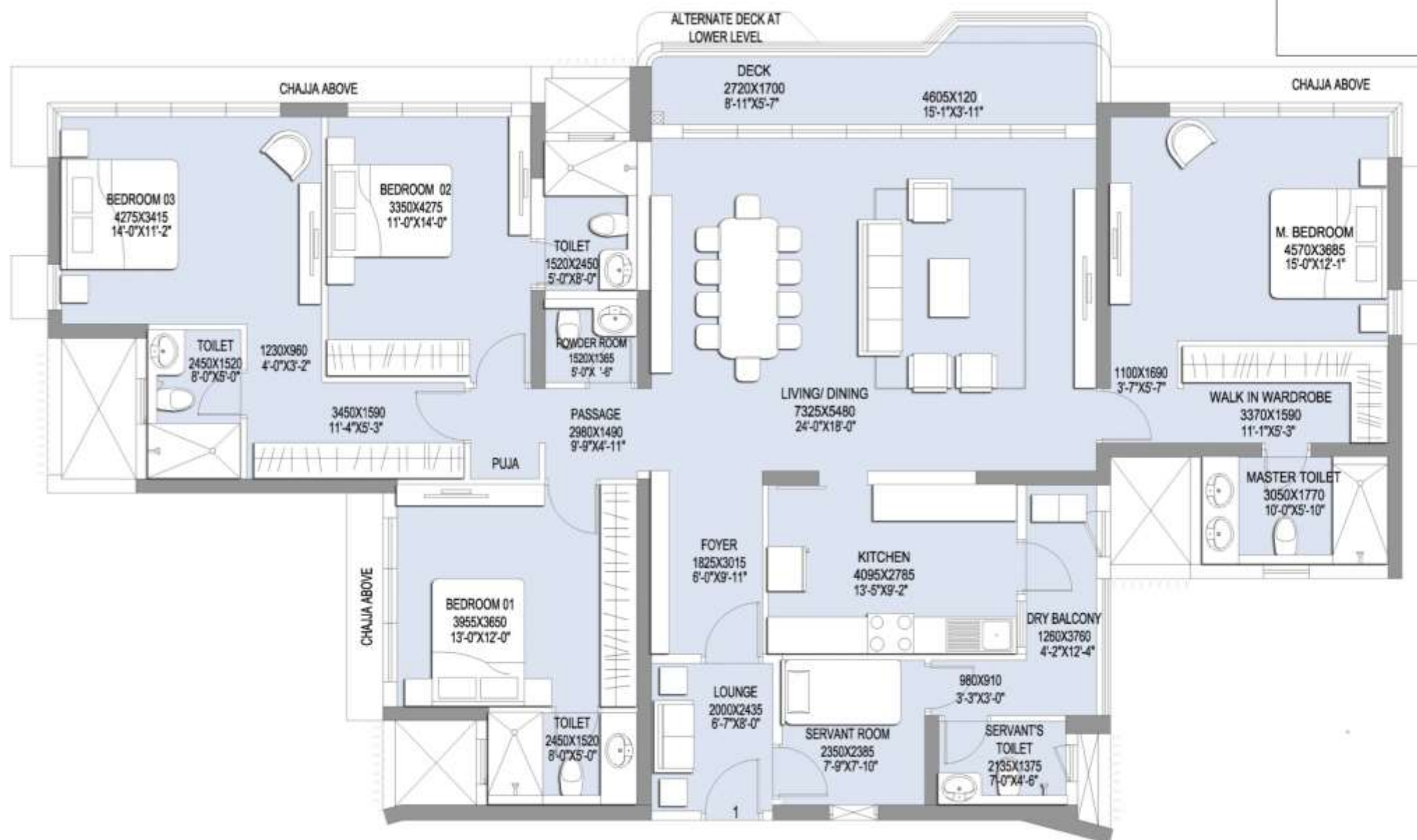


KEY PLAN - T7

Apartments open on three sides | Powder room for living area | Walk-In-Wardrobe for Master Bedroom | Imported Marble floorings | Split air conditioners in living areas and bedrooms

T7 TOWER "ROYALE" UNIT PLAN 4BHK (3120)

Carpet Area – 2011.04 Sq.ft.



Puja room | Apartment open from three sides | Imported marble flooring | Split air conditioners in living & bedroom | Luxurious master bedroom with walk-in wardrobe | Separate entry for servant room | Powder room for guests