

30  
Years  
OF MILESTONES



Site Address : Kanakia Zen World, Near Kanjurmarg Railway Station, Kanjurmarg East, Mumbai - 400 042

Corporate Address : 215-Atrium,10th floor, Next to Courtyard Marriott Hotel, Opp. Divine Child High School, Andheri Kurla Road, Andheri (East), Mumbai - 400 093, INDIA.

Phone:91-22-6726 6666 / 6726 7777(Board) | Fax: 91 -22-66937777 | web:www.kanakia.com

**CALL: 1800 267 1200**

Kanakia Zen World (Phase-I) has been registered under Maharashtra Real Estate Regulatory Authority vide MahaRERA Registration No. P51800008343 available at website: [www.maharera.mahaonline.gov.in](http://www.maharera.mahaonline.gov.in)

Disclaimer : This printed material inters alia image, contents therein is for representative purpose only. All the plans, designs, images, specification, dimensions, facilities and other details herein are purely indicative in nature and the intended recipient should note that these are to be treated as purely informative.

\*The property is secured with "ICICI Bank Limited". The No Objection Certificate/permission of the said bank/institution would be provided for the sale of flats/units/property, if required \*

\*All images and illustrations shown in the show flat herein are artistic impressions and are purely conceptual in nature and are indicative only. Products, features, furniture, floor covering, curtains, mirrors, wall hangings, light fittings, furnishings, pictures, images, etc are shown as illustrations and for reference only. The standard offering does not include all of the above furnishing and fit-out.



# ZEN,

A WORD EVOLVED FROM  
A JOURNEY OF THOUSANDS  
OF MILES



The word Zen is the  
Japanese pronunciation of the Chinese word Chán  
which in turn is the derivation  
of the Sanskrit word

‘ D H Y Ā N A ’

meaning meditative state.

Zen is the Japanese school that pays great emphasis  
to the value of meditation as well as intuition rather than ritual worship or  
study of scriptures.

The goal of Zen is to look within ourselves and discover our true nature  
i.e. enlightenment or ‘satori’ through meditation.





ENSŌ

A UNIVERSE  
IN A  
CIRCLE

Ensō (circle) is a sacred symbol  
in the Zen school and is  
one of the most common subjects  
of Japanese calligraphy, even though  
it is a symbol and not a character.

You may hear  
it called the **Circle of Enlightenment,  
the Infinity Circle** and even the  
Lost Symbol of Reiki.

If you actually took the meanings of the two  
Kanji symbols that make up the word,  
ensō would translate as **Mutual Circle  
or  
Circle of Togetherness.**



In the sixth century a text named the Shinhinmei

refers to the

**way of Zen as a circle  
of vast space,  
lacking nothing  
and holding nothing  
in excess.**

Its symbolism refers to the

beginning and end of all things,

**the circle of life  
and the connectedness  
of existence.**

It can symbolise emptiness or fullness, presence or absence. All things might be contained within, or, conversely, excluded by its boundaries. It can symbolise infinity, the “no-thing”, the perfect meditative state, and

**Satori** or enlightenment.

It can even symbolise the moon, which is itself a symbol of enlightenment - as in the Zen saying, “Do not mistake the finger pointing at the moon for the moon itself.”

Ensō symbolises many more

things including:

**strength, elegance,  
the universe,  
single mindedness,**

the state of mind of the artist at the moment of creation

The circle may be open or closed.

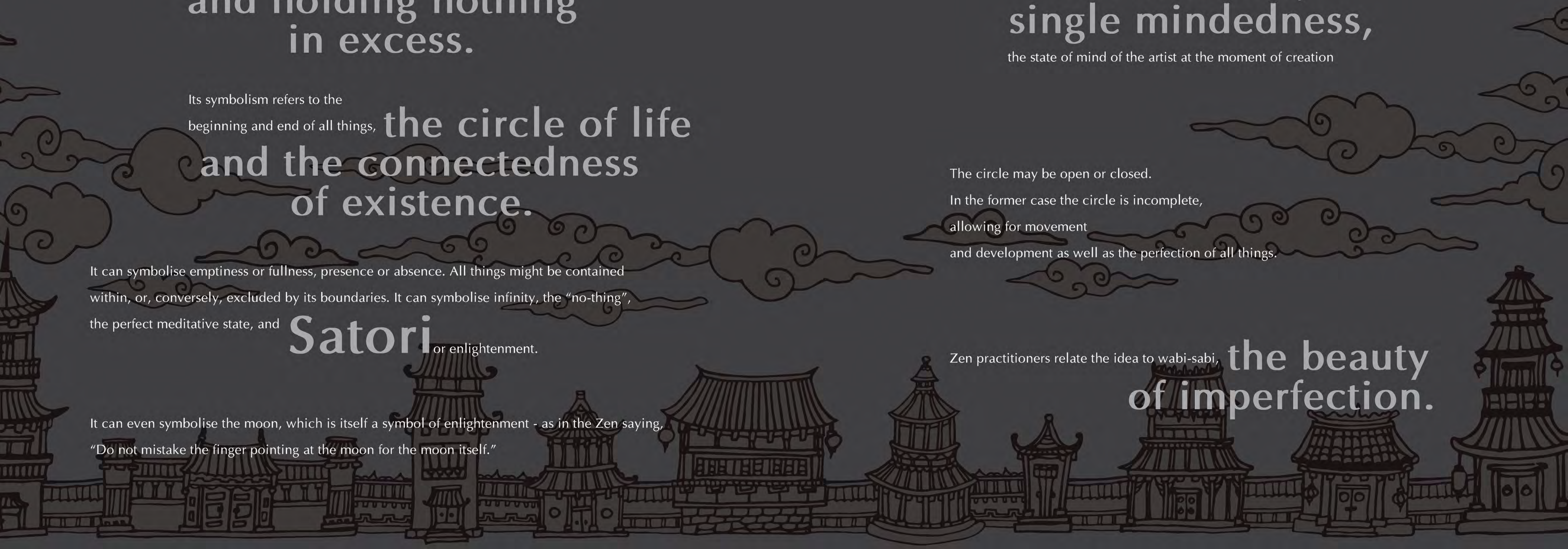
In the former case the circle is incomplete,

allowing for movement

and development as well as the perfection of all things.

Zen practitioners relate the idea to wabi-sabi,

**the beauty  
of imperfection.**





FIND YOUR  
SERENITY





FIND  
YOURSELF





INTRODUCING



**KANAKIA**

**zen**  
**world**

Kanjurmarg (E)



Life in the city of Mumbai is at a breakneck speed. Time is a luxury and a time off is occasional. A typical Mumbaikar needs to literally get out of the city to find peace.

Kanakia Zen World is conceptualised to offer a home as well as a place of solace and solitude. From the interiors to the amenities, every facet of the project has been carefully designed to create your world of peace.

Find your way to relaxation, every day at Kanakia Zen World.

**Phase - I**

**5 Wings with Basement + Stilt + 22 Storeys**

**1 / 2 / 3 Bed Residences**

Note: The developer proposes to construct Phase-II comprising of Wing "F" with maximum 49 upper floors (subject to receipt of approvals from competent authorities).





# LOCATION MAP



Graphical Representation Only. Not True to Scale.



LOCATION  
S A L I E N C E



Airport  
12.2 Kms



Railway  
0.7 Kms



Hospital  
4 Kms



E.E.Highway  
1.4 Kms



Schools  
3.3 Kms



Banks  
0.5 Kms



Malls  
4 Kms



Hotel / Restaurants  
4 Kms



HOME  
is  
ZEN







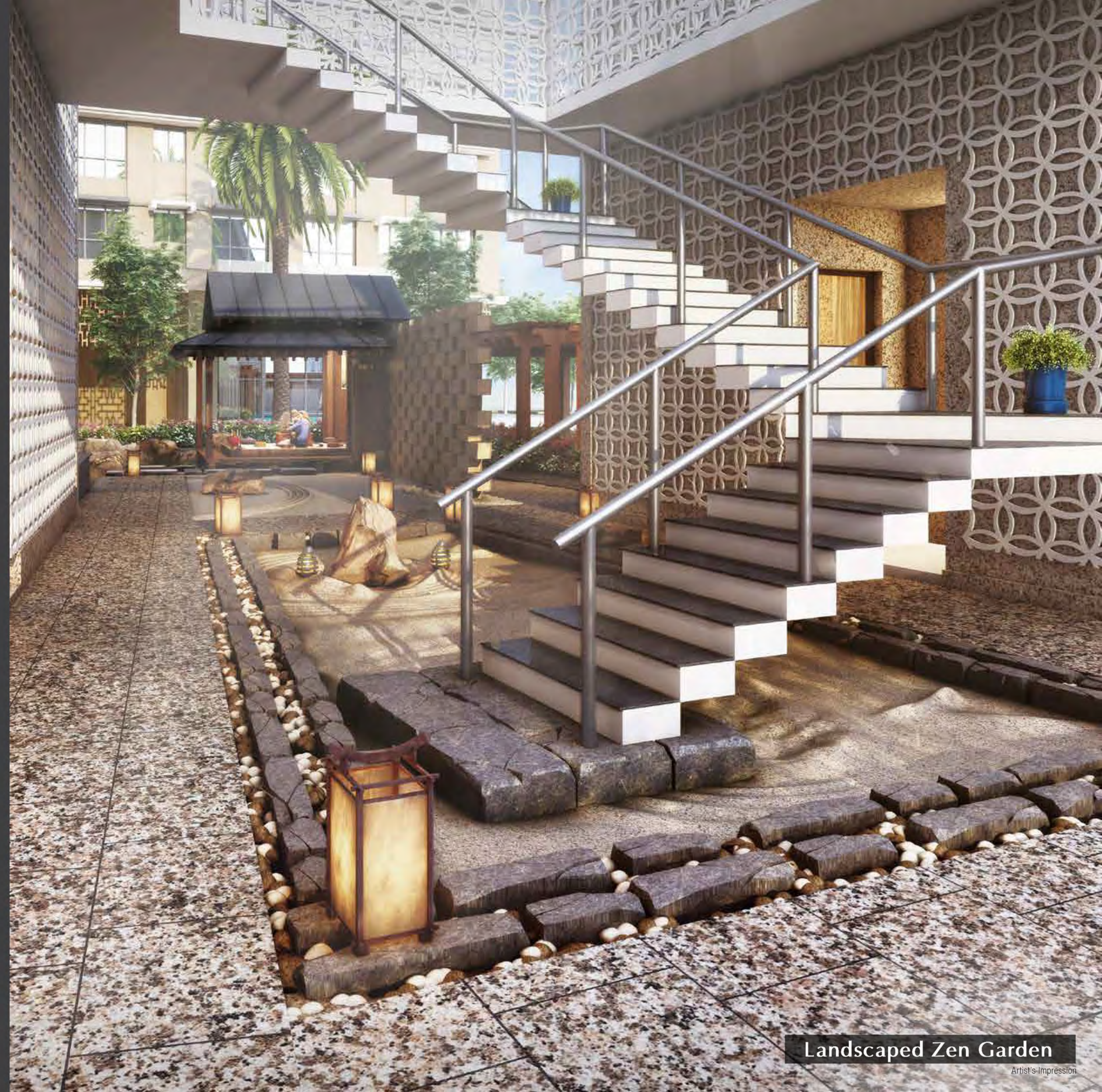
Actual Shot of Show Residence  
\*Disclaimer is on the back cover page



Actual Shot of Show Residence  
\*Disclaimer is on the back cover page



A SIMPLE  
STROLL IS ENOUGH FOR  
A HAPPY STATE  
OF MIND



Landscaped Zen Garden

Artist's Impression



Swimming Pool

Artist's Impression

TAKE A DIP EVERY  
DAY TO KEEP  
STRESS AWAY





SOCIALISING IS  
ALSO A FORM OF  
RELAXATION



Club House

Artist's Impression





Onsen Spa

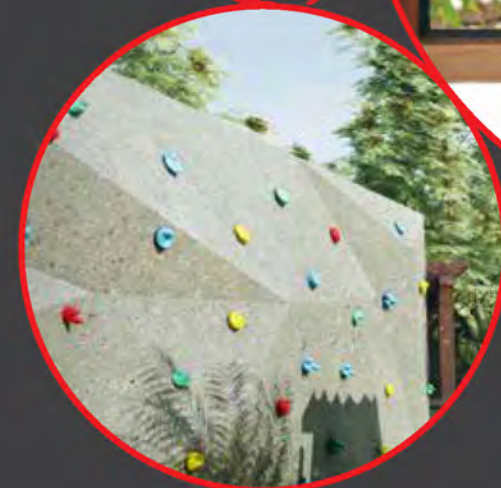
Artist's Impression

THE SPECIAL  
PLACE TO MEET  
YOURSELF





# SOME MORE AMENITIES



Jogging Area ○ Kids Play Area ○ Indoor Games ○ Rock Climbing Wall

Gymnasium ○ Meditation Space ○ Concierge\*



## OUR GROUP

Kanakia Group was formed in the year 1986. Today Kanakia Group has earned a distinct reputation as one of India's premium developers and is rated as one of the top Real Estate development brands in Mumbai.

Kanakia Spaces Realty Pvt. Ltd. the flagship real estate development company has delivered till date over 14 million sq. ft. of commercial, residential, entertainment, education and industrial spaces.

Kanakia Spaces has been honored with several prestigious awards for their landmark projects.

## OUR ACHIEVEMENTS





# OUR AWARDS

## MOST PROMISING & INNOVATIVE REAL ESTATE BRAND IN MUMBAI



**MOST PROMISING BRAND**  
WORLD CONSULTING & RESEARCH CORPORATION  
CONSUMER AND PRODUCT SURVEY BY **ibrands360**  
Process Advisors & Evaluators: Ernst & Young

**BEST INNOVATIVE DEVELOPER OF THE YEAR**  
West India - ESTATE AWARDS 2014  
Gurgaon, INDIA