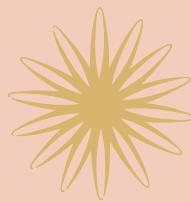


www.orris.in



POSSESSION  
STARTED

REGISTRY OPEN



# ASTER COURT

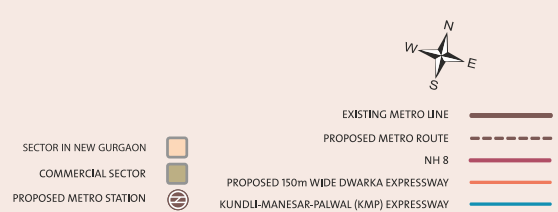
the essence of elite living

Sector 85 • New Gurgaon

PRIME LOCATION  
SECTOR 85, NEW GURGAON



  
**ASTER COURT**  
the essence of elite living



"Disclaimer: Visuals shown are an artistic impression and not a legal offering. All specifications are indicative and subject to change without prior notice."

1sq.mtr.=10.76 sq.ft. Map not to scale

Actual Site Image



PROPOSED SPECIFICATIONS FOR ASTER COURT

LOCATION	FLOOR	WALLS	CEILING	DOORS	WINDOWS	IRONMONGERY	OTHERS
LIVING DINNING	VITRIFIED TILES	ACRYLIC WASHABLE DISTEMPER	ACRYLIC WASHABLE DISTEMPER	FLUSH DOOR WITH HARDWOOD FRAME	UPVC FRAME AND GLAZING	ALUMINIUM ANODIZED/ HANDLES & LATCHES WITH MORTICE LOCKS	MODULAR TYPE SWITCHES & SOCKETS, COPPER WIRING
BED ROOMS	VITRIFIED TILES	ACRYLIC WASHABLE DISTEMPER	ACRYLIC WASHABLE DISTEMPER	FLUSH DOOR WITH HARDWOOD FRAME	UPVC FRAME AND GLAZING	ALUMINIUM ANODIZED/ HANDLES & LATCHES WITH MORTICE LOCKS	MODULAR TYPE SWITCHES & SOCKETS, COPPER WIRING
TOILETS	ANTI-SKID CERAMIC FLOOR TILES	COMBINATION OF CERAMIC TILES & ACRYLIC WASHABLE DISTEMPER	ACRYLIC WASHABLE DISTEMPER	FLUSH DOOR WITH HARDWOOD FRAME	UPVC FRAME AND GLAZING	ALUMINIUM ANODIZED/ HANDLES & LATCHES WITH MORTICE LOCKS	WHITE SANITARY FIXTURES & C.P. FITTINGS
KITCHEN	VITRIFIED TILES	COMBINATION OF CERAMIC TILES & ACRYLIC WASHABLE DISTEMPER	ACRYLIC WASHABLE DISTEMPER	FLUSH DOOR WITH HARDWOOD FRAME	UPVC FRAME AND GLAZING	ALUMINIUM ANODIZED/ HANDLES & LATCHES WITH MORTICE LOCKS	GRANITE COUNTER WITH STAINLESS STEEL SINK
BALCONIES	VITRIFIED TILES	EXTERIOR EMULSION PAINT AND MS RAILING FINISHED WITH SYNTHETIC ENAMEL PAINT	ACRYLIC WASHABLE DISTEMPER	FLUSH DOOR WITH HARDWOOD FRAME		ALUMINIUM ANODIZED/ HANDLES & LATCHES WITH MORTICE LOCKS	
COMMON PASSAGE	INDIAN MARBLE	ACRYLIC EMULSION PAINT	ACRYLIC EMULSION PAINT				
MAIN STAIRCASE	INDIAN STONE (RISERS & TREADS)	ACRYLIC EMULSION PAINT WITH MS BALUSTERS FINISHED WITH SYNTHETIC ENAMEL PAINT & HANDRAIL	ACRYLIC WASHABLE DISTEMPER				
AMENITIES	100% POWER BACK-UP, PANIC ALARM, INTERCOM AT SECURITY GATE AND TOWER ENTRY. TELEPHONE POINT IN EACH FLAT, COMMUNITY HALL, JOGGING TRACK & KIDS PLAY AREA.						
STRUCTURE	EARTHQUAKE RESISTANT RCC FRAMED STRUCTURE						
EXTERNAL DEVELOPMENT/ LANDSCAPE	REFLECTING POOL, DECK WITH METAL TRELLIS, SCULPTURED GARDEN & MAIN ENTRANCE PLAZA HUGE KIDS PLAY AREA, TENNIS COURT , BADMINTON COURT ETC						
LIFT	ONE PASSENGER & ONE SERVICE LIFT IN EACH TOWER.						

DESIGN & LANDSCAPE BY INTERNATIONAL ARCHITECT - NELSON (U.S.A)

Note 1sq.mtr = 10.76 sq.ft



An integral part of 29 acres of group housing, **Aster Court** is situated in a prime location in sector 85, New Gurgaon, right in the midst of a new world where business complexes, 5 star hotels, already operational well known industries, amusement & water parks are all within close proximity.

With options of **2, 3, 3+1 & 4 BHK**, **Aster Court** gives you a life set in luxury with its well planned infrastructure along with aesthetic outdoor landscaping and a well equipped high-tech club.

We at **Orris**, give you an essence of luxury in the space that surrounds you at a cost that makes you feel at ease. We present to you **the essence of elite living**.

- Strategically located within hailing distance from NH8
- Well connected and in close proximity to Dwarka Expressway, KMP Expressway, Manesar, RIL SEZ, IGI and Domestic airport
- Easy accessibility to proposed Metro station and ISBT
- In close proximity to already operational known industries such as Maruti, Honda, GIVO, Tilda etc.
- Approx 5 min drive from Haldiram's
- Approx 40 mins drive from Dhaula Kuan

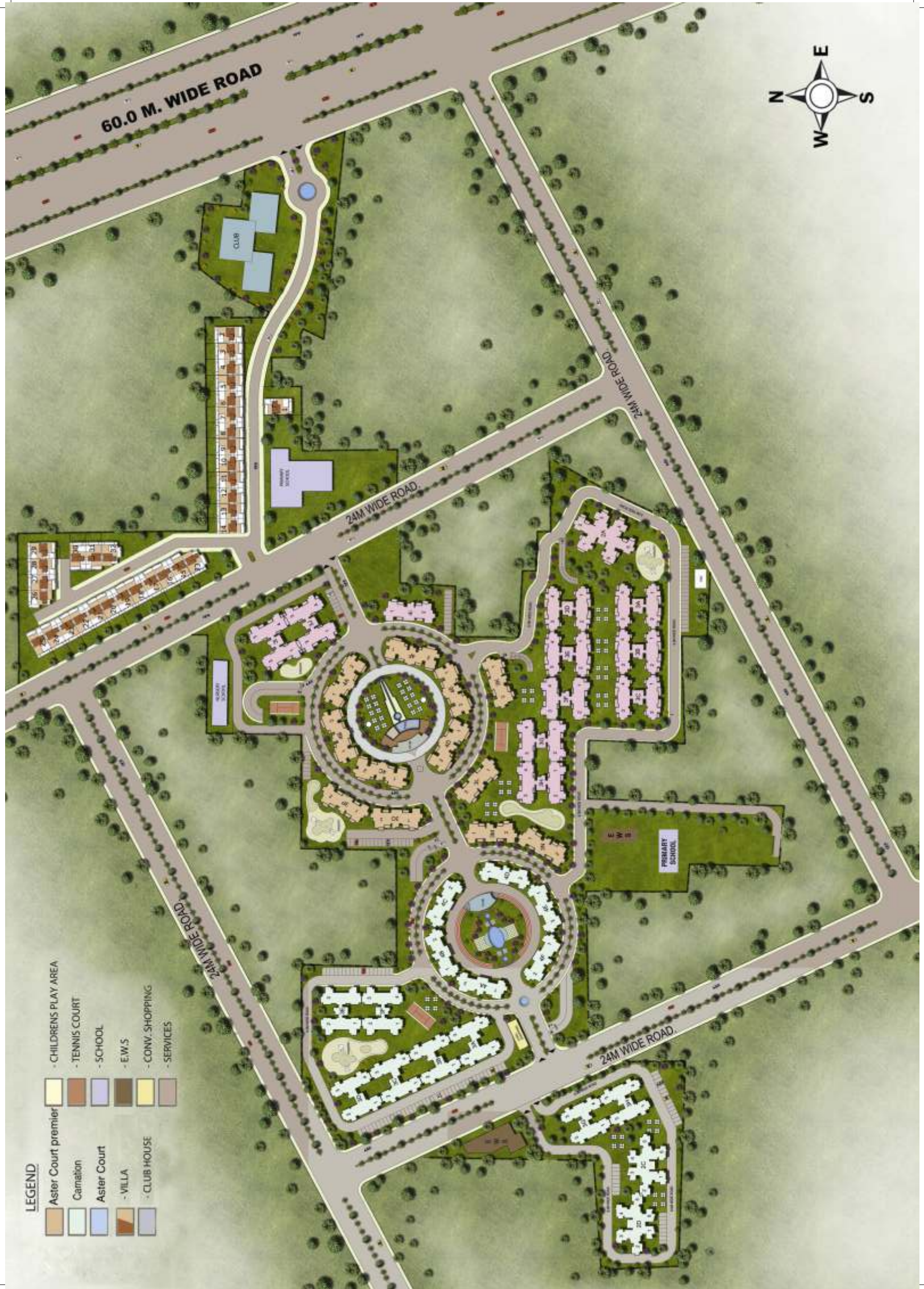


- Dedicated club with state of the art health club, swimming pool, gymnasium and well designed sports ground with tennis, squash & badminton court
- Basic amenities such a supermart/clinic/primary school/creche/children tot-lot all met within the complex
- Open air theater
- Multi purpose hall
- Water harvesting
- Ample parking Space
- Superior quality construction & an earth quake resistant structure as per seismic zone IV
- Power back up
- Excellent facility management system.
- CCTV at the main entrance with round the clock security
- Well ventilated, uncluttered apartments with natural flow of light
- landscaped grounds and well planned infrastructure by Internationally renowned architect Nelson (U.S.A)
- 4 side open location
- Pocket friendly sizes
- Project approved by banks

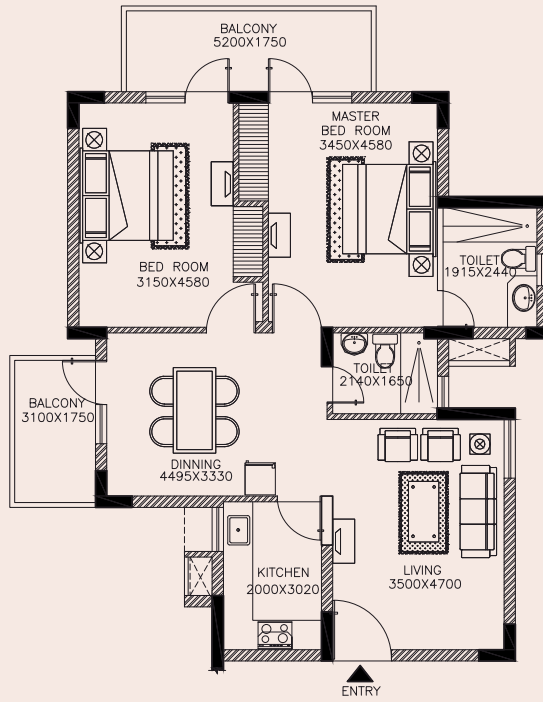


Actual Image - Club Harbor



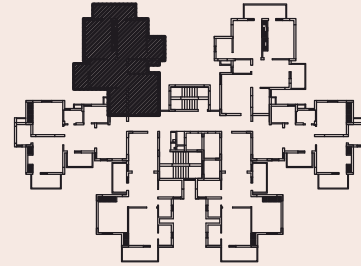






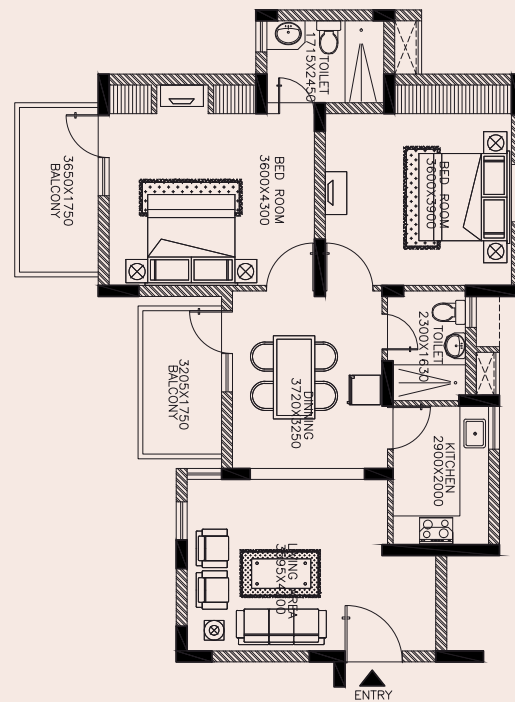
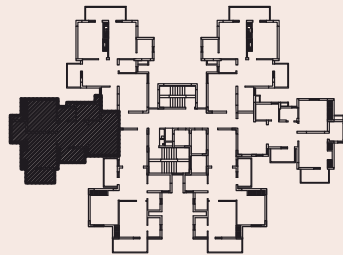
## TYPE - A

ASTER COURT  
2 BHK  
TOWER = 2D  
SIZE - 1375 SQ.FT.



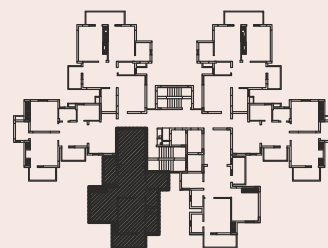
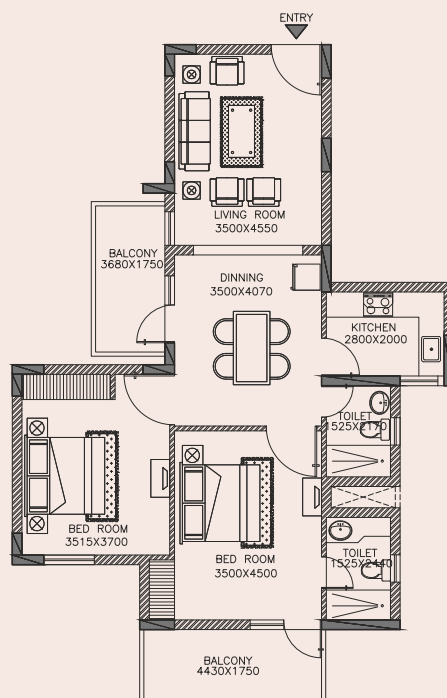
## TYPE - B

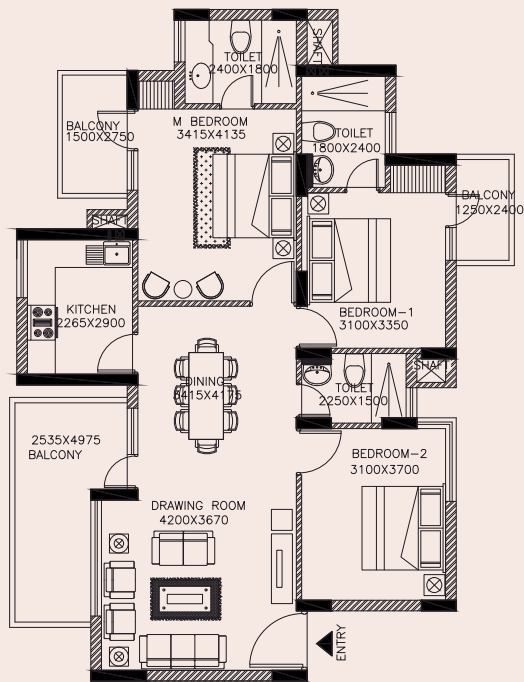
ASTER COURT  
2 BHK  
TOWER = 2D  
SIZE - 1312 SQ.FT.



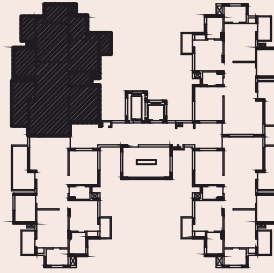
## TYPE - C

ASTER COURT  
2 BHK  
TOWER = 2D  
SIZE - 1315 SQ.FT.

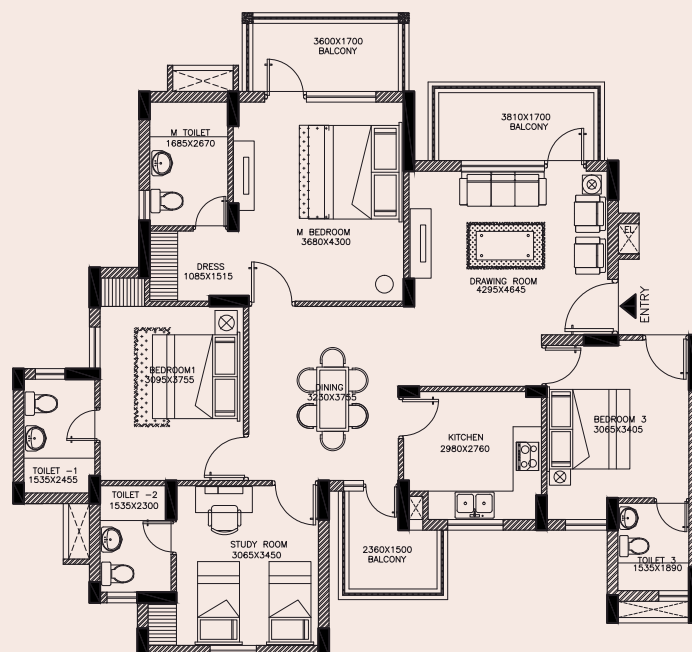
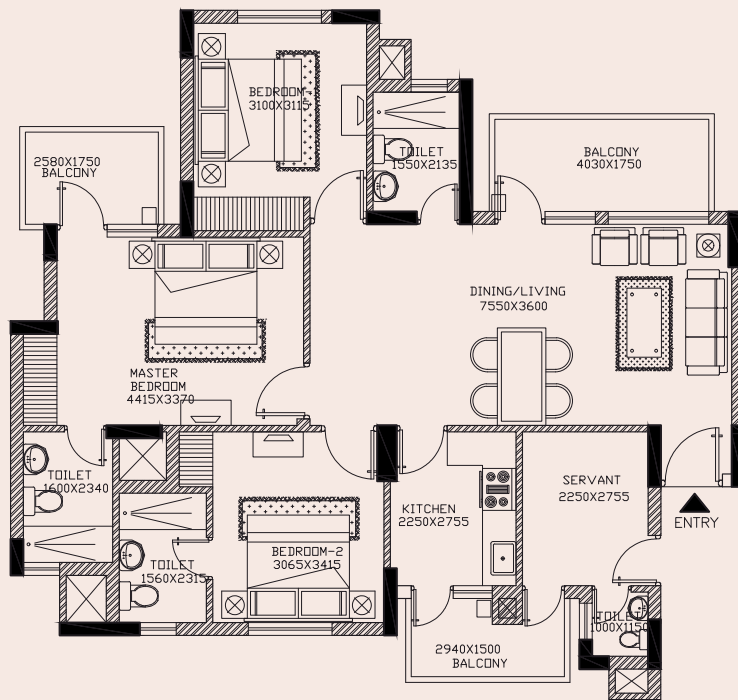
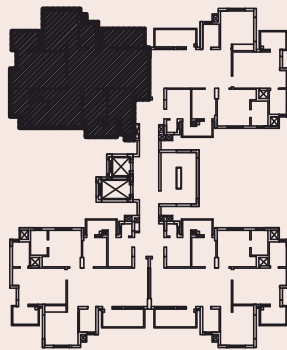




ASTER COURT  
3 BHK  
TOWER = 3A, 3B, 3C, 3D  
SIZE - 1587 SQ.FT.



ASTER COURT  
3 BHK + SR  
TOWER = 3F, 3G, 3H, 3I & 3J  
SIZE - 1675 SQ.FT.



ASTER COURT  
4 BHK  
TOWER = 4I  
SIZE - 1952 SQ.FT.



## About Us

Incorporated in the year 2006, Orris Infrastructure Private Limited has been at the helm of the urban-living landscape of Delhi NCR that has sprouted over the last decade. Conceptualizes with a vision to develop projects with both utility and aesthetics in balance, Orris has positioned quite a few established architectural creations on the Delhi NCR horizon. And in this due process Orris has developed a team of associates that add value & credence to the brand and further endorse its commitment towards delivering excellence in product & experience.

Every growth story has a core - a core foundation, a core value system and a core team. To deliver you the best, we ensure that the finest of material, finest of talent and finest of business vision is put together. For a decade, we have kept our ears to the ground - in the know of what the present looks like and what the future holds. The clear intention being to beat the perception gap within the industry and make decisions that create value for all our stakeholders.

With our eyes set on contributing significantly to 'Building a new India', we derive our strength from the core values of Teamwork, Integrity, Excellence and Relationships. TIER by TIER, we aim to deliver a distinguished lifestyle, social entertainment, tranquil living spaces and convenience that makes living easy and blissful. Keeping a utilitarian view of amenities and choreographing an emotional connect with the spaces.

### DELIVERED PROJECTS

**CARNATION**  
RESIDENCY

Sector 85 • New Gurgaon

*Floreal Towers*

Sector 83 • New Gurgaon

*Orris*  
**greenbay**  
GOLF VILLAGE

Plot No. TS-06, Sector-22D, Yamuna Expressway

### ON GOING PROJECTS

*Orris*  
**ASTER COURT**  
*premier*  
discerning lifestyle for a select few

Sector 85 • New Gurgaon

**greenopolis**  
greenopolis is a new concept of a green city

Sector 89 • New Gurgaon

**THE BLUE LAGOON**  
Enchanting Life

Sector 85 • New Gurgaon

**Market City**  
The BIG Advantage

Sector 89 • New Gurgaon

**CORINTHIA**

Sector 82A • New Gurgaon

**CURI CITY**

Plot No. TS-06, Sector-22D, Yamuna Expressway

**WOODVIEW**  
RESIDENCES  
A PROJECT BY ORRIS AND LOTUS GREENS  
SECTOR 89, 90 GURGAON

### UPCOMING PROJECTS

*Orris*  
**THE VILLAS33**  
SECTOR 85, NEW GURGAON

**THE SQUARE**  
A Lifestyle hub by Orris  
NH-8, Sector - 90, New Gurgaon

**Panache**  
OFFICE CUM RETAIL SPACE  
Sector 82-A, Gurgaon

## ORRIS INFRASTRUCTURE PVT. LTD.

REAL ESTATE | ENERGY | HOSPITALITY | GOLF | EDUCATION

☎ 9555 700 900

@ mail@orris.in

**Corporate Office:** Orris HQ, MG Road, Gurgaon - 122002 | [www.orris.in](http://www.orris.in)  
**Sales Office Gurgaon:** Orris Gallery, Sector 89, New Gurgaon, Haryana.

Disclaimer: The content in this brochure including the building plans, elevations, images, location details, areas, designs, layouts, specifications etc. are tentative and are merely indicative in nature and are subject to variations and modifications at the sole discretion of the company. This brochure is for reference purpose only and not a legal offer. 1 sq. mt. = 10.76 sq.ft.

No. & date of License: 39/24-07-2009 & 99/17-11-2011 » Type of colony & its area: residential group housing 29.068 acres » Name of the colonizer: Orris Infrastructure Pvt. Ltd. » No. & date of the approved building plans: memo no-ZP-556/JD(BS)/2012/5150 dt. 10-04-12 »